



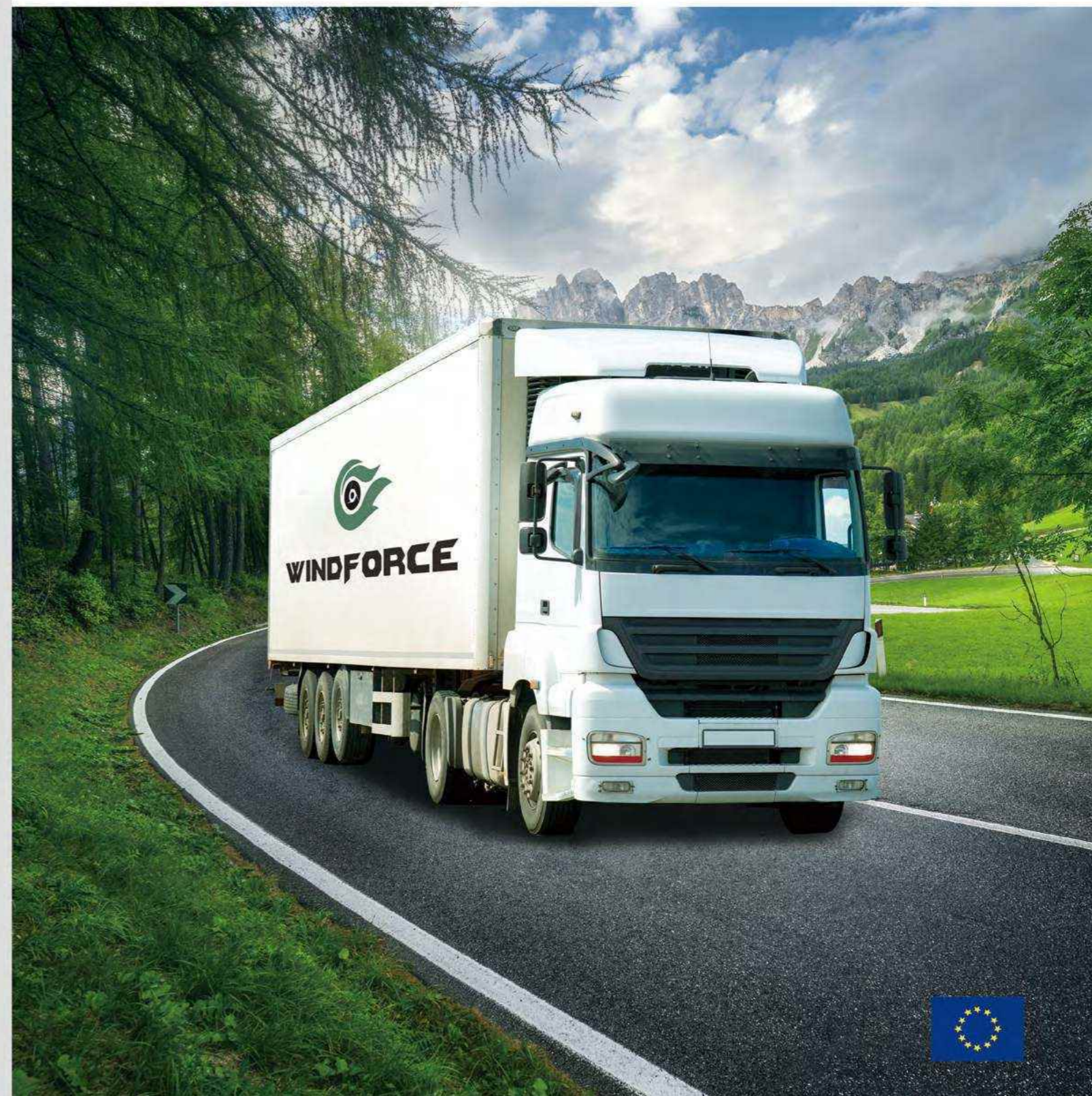
**QINGDAO LANDSPIDER TIRE CORP.,LTD**

**WWW.LANDSPIDERTIRE.COM**

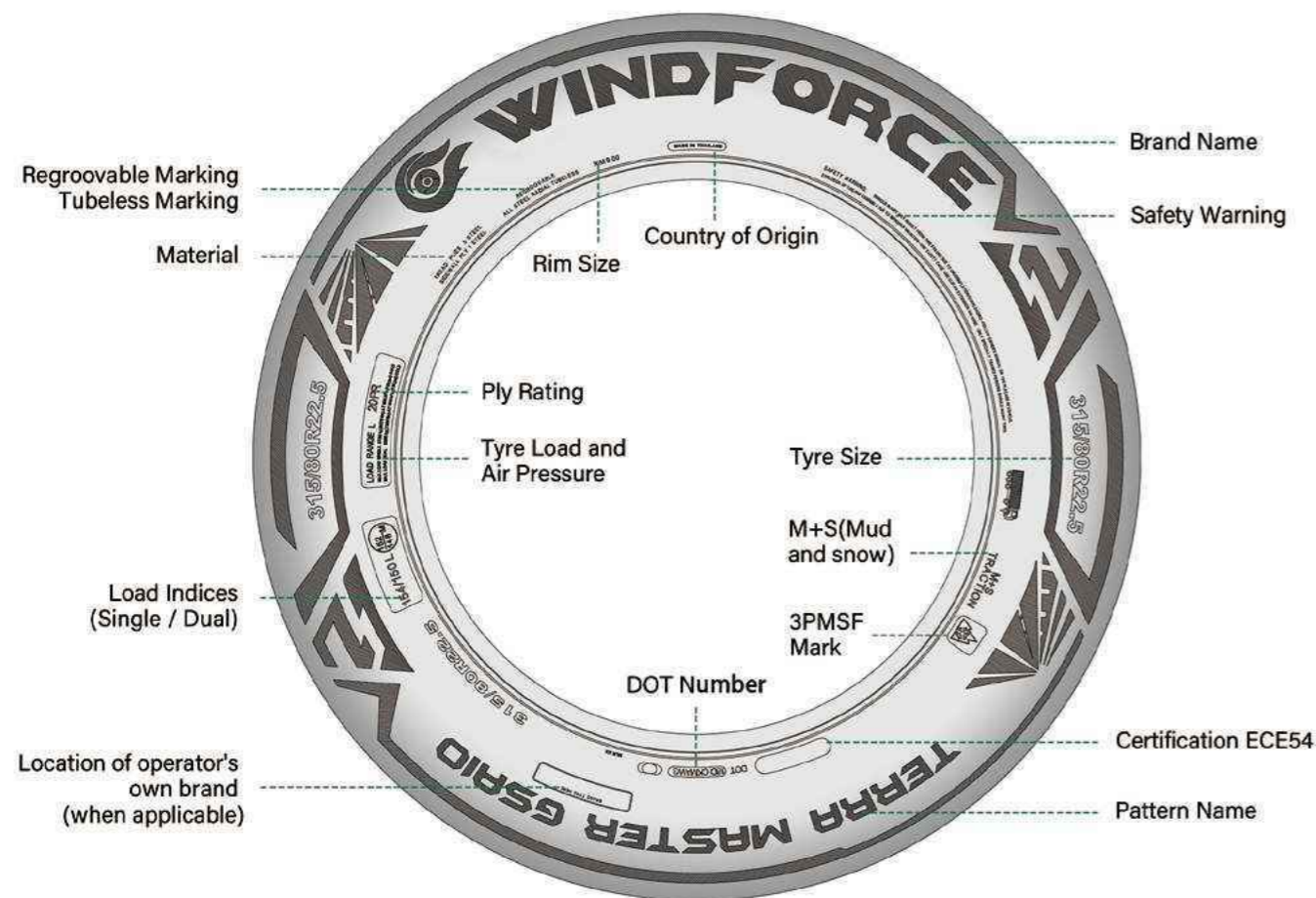
 **WINDFORCE**  
ENJOY YOUR TRIPS WITH WINDFORCE TYRES

## **TRUCK AND BUS TYRES** UPGRADING

PRODUCT CATALOGUE • 2025



## SIDEWALL DIAGRAM



LONG HAUL



REGIONAL/ALL ROUTES+



MIX SERVICE

## WINDFORCE SINCE 2012

**WINDFORCE** provides safety and value for the global customers, is constantly striving to create the best solutions for each application.

**WINDFORCE** provides a wide variety of PCR/TBR to customers, based on the demand from local market.

**WINDFORCE** persists on green tires to protect the environment in a concept of low carbon development and lowers the rolling resistance of tires.

**WINDFORCE** supplied by global TOP 9 manufacturer, has perfect quality supervision system, after-sales system and quality certification system to guarantee the product quality and improve the customer satisfaction.

## TYRE CONSTRUCTION



4-LAYER STEEL BELTS  
STRUCTURE TECHNOLOGY (FLST)

SIDEWALL: 1 STEEL LAYER  
TREAD: 5 STEEL LAYER



ZERO DEGREE STEEL BELTS  
STRUCTURE TECHNOLOGY (ZDST)

SIDEWALL: 1 STEEL LAYER  
TREAD: 4 STEEL LAYER



JOINTLESS STEEL WIRE WRAPPING  
STRUCTURE TECHNOLOGY (JWWT)

Optimizes the shape of the contact patch for longer tread life and strengthens the crown against shocks and impacts, especially for widebase or super single loading sizes.

FLST & ZDST are two leading technology for TBR engineering nowadays. WINDFORCE, according to service conditions from local market, applies the better one to improve the satisfaction of customers.

## HOW TO READ THE PROFILE NAME

**TERRA MASTER**  
**G A R 60**

Product family name

G → Green

S → Steer Axle  
D → Drive Axle  
T → Trailer Axle  
A → All Axle

A → All Routes+  
L → Long Haul  
R → Regional  
M → Mix Service

Product Version

**MADE IN THAILAND**

## APPLICATIONS

### ALL ROUTES+



Hybrid concept of long haul and regional application.  
Excellent fuel efficiency with maximum mileage.

### LONG HUAL



Long-range travel with consistent speed and less braking or accelerating.  
Well paved road surface with fewer curves.

### REGIONAL



Journeys with repeated braking, acceleration, and turning.  
Well-paved road with curves and occasionally rough conditions.

### MIX SERVICE



Both on and off road with aggressive, uneven or muddy road conditions.  
Heavy loads at medium to slow speeds and frequent stopping.

## CONTENTS

### ALL ROUTES+



**TERRA MASTER  
GSA10**  
A----03



**TERRA MASTER  
GDA20**  
A----05

### LONG HUAL



**TERRA MASTER  
GSL80**  
L----09



**TERRA MASTER  
GDL90**  
L----11



**TERRA MASTER  
GTL30**  
L----13

### REGIONAL



**TERRA MASTER  
GAR60**  
R----17

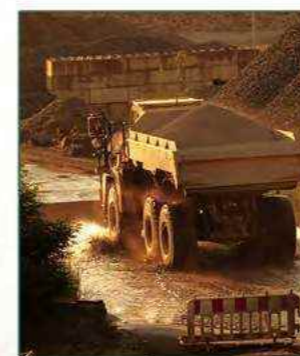


**TERRA MASTER  
GDR70**  
R----19



**TERRA MASTER  
GTR50**  
R----21

### MIX SERVICE



**TERRA MASTER  
GAM66**  
M----25



**TERRA MASTER  
GDM77**  
M----27



**TERRA MASTER  
GAM55**  
M----29

# THE ALL ROUTES+ SERIES

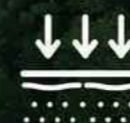


- Hybrid concept of long haul and regional application
- Excellent fuel efficiency with maximum mileage
- Improved road grip prepare for various road surface



## Multi-Purpose Performance compound

Nano-silica and high-quality natural rubber tread compounds ensure the tyre's durability on long-haul and regional road conditions.



## Shoulder stiffness optimized technology

Shoulder stiffness hold technology can optimize the tyre footprint, improve contact pressure distribution, less uneven wear.



## Stable belt construct design

The stable structure of the belt reduces the shear deformation, enhanced tyre life and durability.

Highway

Country Road

City

Construction Site



## TERRA MASTER GSA10

### TECHNICAL FEATURE

Four curved tread grooves ensure good drainage performance.



Special designed tread pitches ensure low external noise.



Multi kerf provides outstanding traction on wet and snow road surface.



## TERRA MASTER GSA10



M+S

The latest generation of high-performance steer position tyre for national and regional operations.

### SIZE RANGE Steer



SIZE	PR	LI/SS	TREAD DEPTH (MM)	M+S				dB	
295/80R22.5	18	154/149M	14	✓	✓	C	C	73	B
315/70R22.5	20	156/150L(152/148M)	15	✓	✓	C	C	73	B
315/80R22.5	20	156/153L(154/151M)	16	✓	✓	C	C	73	B
385/55R22.5	20	160K(158L)	15	✓	✓	B	B	73	B
385/65R22.5	20	160K(158L)	15	✓	✓	B	C	73	B
	24	164K	15	✓	✓	B	C	73	B



# TERRA MASTER GDA20



M+S

The latest generation of high-performance drive position tyre for national and regional operations.



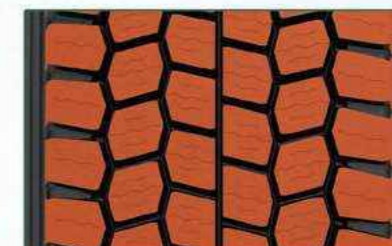
## TERRA MASTER GDA20

### TECHNICAL FEATURE

Deep tread depth improves traction and grip on the road and extends tire life.



Optimized deep multi-blocks pattern design provides ultra driving force.




Widened tread width enhances driving stability and provides even pressure distribution.



### SIZE RANGE Drive



SIZE	PR	LI/SS	TREAD DEPTH (MM)	M+S				dB	
295/80R22.5	18	152/149M	19	✓	✓	D	C	75	B
315/70R22.5	20	154/150L(152/148M)	19	✓	✓	D	C	75	B
315/80R22.5	20	156/153L(154/151M)	21	✓	✓	D	C	75	B

## THE LONG HAUL SERIES



- Long distance journey with constant speed and less braking and accelerating.
- Less fuel consumption and comfortable ride.
- High mileage performance.



TERRA MASTER  
**GSL80**

TERRA MASTER  
**GDL90**

TERRA MASTER  
**GTL90**

Highway

Country Road

City

Construction Site



### Special low heat compound design

Special compound design, low heat generation during tire running, low CO<sub>2</sub>, energy saving and environmental protection.



### Optimized pattern design

The optimized design of pattern, high land-sea ratio pattern design effectively reduce the rolling resistance of tires, more fuel efficient.



### Advanced tire design theory

Advanced tire design concepts, make the tire longevity, green and safety.



# TERRA MASTER GSL80



M+S

The latest generation of high-performance steer tyre for long haul application



## TERRA MASTER GSL80

### TECHNICAL FEATURE

Advanced 3 grooves tread provides even wear and remarkable handling.



Wider tread and higher saturation, provides longer mileage and more driving stability.







Special tread compound guarantees less fuel consumption with lower rolling resistance.



### SIZE RANGE Steer



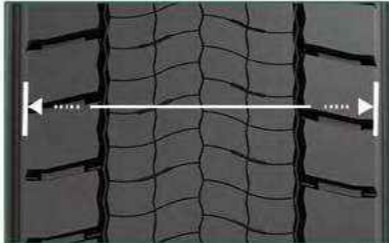
SIZE	PR	LI/SS	TREAD DEPTH (MM)	M+S				dB	
315/60R22.5	20	154/150L(152/148M)	11	✓	✓	B	C	74	B
315/70R22.5	20	156/150L(152/148M)	12	✓	✓	B	C	74	B
385/55R22.5	20	160K(158L)	15	✓	✓	B	C	74	B



# TERRA MASTER GDL90

## TECHNICAL FEATURE

Wider tread and higher saturation, provides longer mileage and more driving stability.



As hidden grooves appear at the end of wear, it keeps wet grip and traction performance.



Special tread compound guarantees less fuel consumption with lower rolling resistance.



# TERRA MASTER GDL90



The latest generation of high-performance drive tyre for long haul application.

## SIZE RANGE Drive



SIZE	PR	LI/SS	TREAD DEPTH (MM)	M+S					
295/60R22.5	18	150/147K(149/146L)	13.5	✓	✓	B	C	74	B
315/60R22.5	20	154/150K(152/148L)	14	✓	✓	B	B	74	B
315/70R22.5	20	154/150L(152/148M)	13.5	✓	✓	B	C	74	B



# TERRA MASTER GTL30



M+S

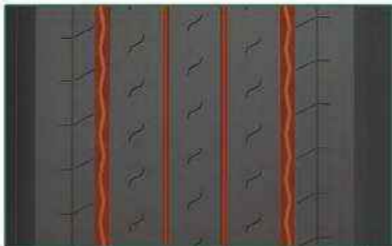
Wide base trailer tyre specially design for trailer service.



## TERRA MASTER GTL30

### TECHNICAL FEATURE

The pattern with two main channel grooves and wider ribs maximizes.



The robust shoulder ribs provide driving stability and prevent uneven wear.



Low rolling resistance compound reduces the loss of energy and results in.



### SIZE RANGE Trailer



	SIZE	PR	LI/SS	TREAD DEPTH (MM)	M+S				dB	
tread A	385/55R22.5	20	160K(158L)	15	✓	✓	B	C	74	B
	385/65R22.5	20	160K(158L)	15	✓	✓	B	C	74	B
		24	164K	15	✓	✓	B	C	74	B
tread B	435/50R19.5	20	160J(156K)	12	✓	✓	B	C	74	B
	445/45R19.5	20	160J	12	✓	✓	B	B	74	B

## THE REGIONAL SERIES



- Shorter journey with frequent braking, accelerating and turning
- Improved road grip with maximum mileage
- Exceptional tough type



**TERRA MASTER  
GAR60**

**TERRA MASTER  
GDR70**

**TERRA MASTER  
GTR50**

Highway

Country Road

City

Construction Site



### Shoulder Rigidity Reinforced Design

By optimizing the overall material distribution of the tyre, the rigidity and handling stability of the tyre have been greatly improved.



### Ultra-High Tensile Cord

The UHT carcass cords provide better anti-deformation performance for the tyre, while at the same time better dispersing the pressure and significantly increasing the safety performance of the tyre.



### Upgraded security features

Excellent stability and durability, even in challenging weather conditions.



# TERRA MASTER GAR60



New steer tyre engineered with innovative latest technology for local and regional operations with rims of 17.5" and 19.5".



## TERRA MASTER GAR60

### TECHNICAL FEATURE

- Computer designed 5-Rib tread provides precise handling.
- Tread sipes alongside tread grooves offer outstanding wet operation and even tread contact on road surface.
- The high, rigid belt structure enhances driving stability.



### SIZE RANGE All Axle



SIZE	PR	LI/SS	TREAD DEPTH (MM)	M+S				dB	
205/75R17.5	14	124/122M (126/124G)	12	✓	✓	D	C	72	B
215/75R17.5	14	128/126M	13	✓	✓	D	C	72	B
	16	135/133J	13	✓	✓	D	C	72	B
225/75R17.5	14	129/127M	13	✓	✓	D	C	72	B
235/75R17.5	14	132/130M	14	✓	✓	D	C	72	B
	16	143/141J	14	✓	✓	D	C	72	B
245/70R17.5	16	136/134M	13	✓	✓	D	C	72	B
	18	143/141J	13	✓	✓	D	C	72	B
245/70R19.5	16	136/134M	13	✓	✓	D	C	72	B
	18	141/140J	13	✓	✓	D	C	72	B
265/70R19.5	16	140/138M	13	✓	✓	D	C	72	B
	18	143/141J	13	✓	✓	D	C	72	B
285/70R19.5	16	146/144M	13	✓	✓	D	C	72	B
	18	150/148J	13	✓	✓	D	C	72	B



# TERRA MASTER GDR70



M+S

New drive tyre designed for local and regional application with rims of 17.5" and 19.5".



## TERRA MASTER GDR70

### TECHNICAL FEATURE

Wide tread with grooves enables high mileage and excellent driving performance in variable conditions.



Special tread pattern design for low rolling resistance and excellent traction performance across multi applications.



Excellent footprint design promises even wear and remarkable tyre life.



### SIZE RANGE Drive



SIZE	PR	LI/SS	TREAD DEPTH (MM)	M+S				dB	
205/75R17.5	14	124/122M	15	✓	✓	D	C	73	A
215/75R17.5	14	128/126M	15	✓	✓	D	C	73	A
225/75R17.5	14	129/127M	16	✓	✓	D	C	73	A
235/75R17.5	14	132/130M	16	✓	✓	D	C	73	A
245/70R17.5	16	136/134M	15	✓	✓	D	C	73	A
245/70R19.5	16	136/134M	15	✓	✓	D	C	73	A
265/70R19.5	16	140/138M	16	✓	✓	D	C	73	A
285/70R19.5	16	146/144M	16	✓	✓	D	C	73	A

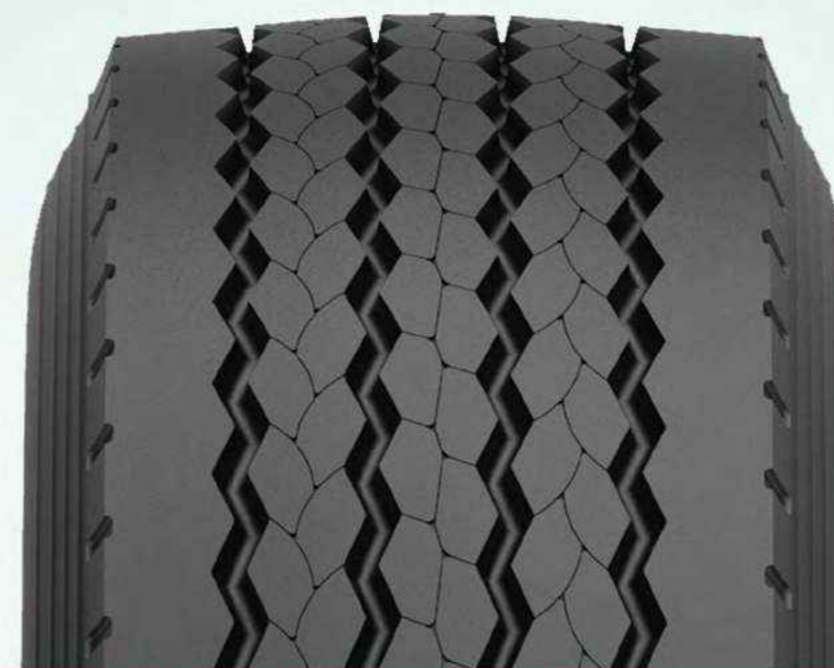


# TERRA MASTER GTR50



M+S

Good damage protection and even wear profile feature outstanding performance in all conditions.



## TERRA MASTER GTR50

### TECHNICAL FEATURE

Four grooves with zigzag designed provide excellent stone ejection and groove crack prevention.



Wide and solid shoulder design guarantee long mileage.



Special tread compound guarantees less fuel consumption with lower rolling resistance.



### SIZE RANGE Trailer



SIZE	PR	LI/SS	TREAD DEPTH (MM)	M+S					
385/65R22.5	20	160K(158L)	15	✓	✓	C	C	72	B
385/65R22.5	24	164K	15	✓	✓	C	C	72	B
425/65R22.5	20	165K	16	✓	✓	C	C	72	B
445/65R22.5	20	169K	16	✓	✓	C	C	72	B

# THE MIX SERVICE SERIES



- Used both on and off road
- Heavy loads and outstanding durability
- Special protection against the damage caused by the road condition



## Reinforced bead structure design

The reinforced structure of the tire bead is used to meet the load demand in the ON/OFF application, and the product life is longer.



## Special cutting resistance compound design

Special cutting resistance compound helps resist chipping, chunking and tearing for a better mileage.



## High tensile cord design

High tensile cord is used in tyres to ensure their load capacity and safety in harsh operating environments.

**TERRA MASTER GAM66**   **TERRA MASTER GDM77**   **TERRA MASTER GAM55**

Highway   Country Road   City   Construction Site

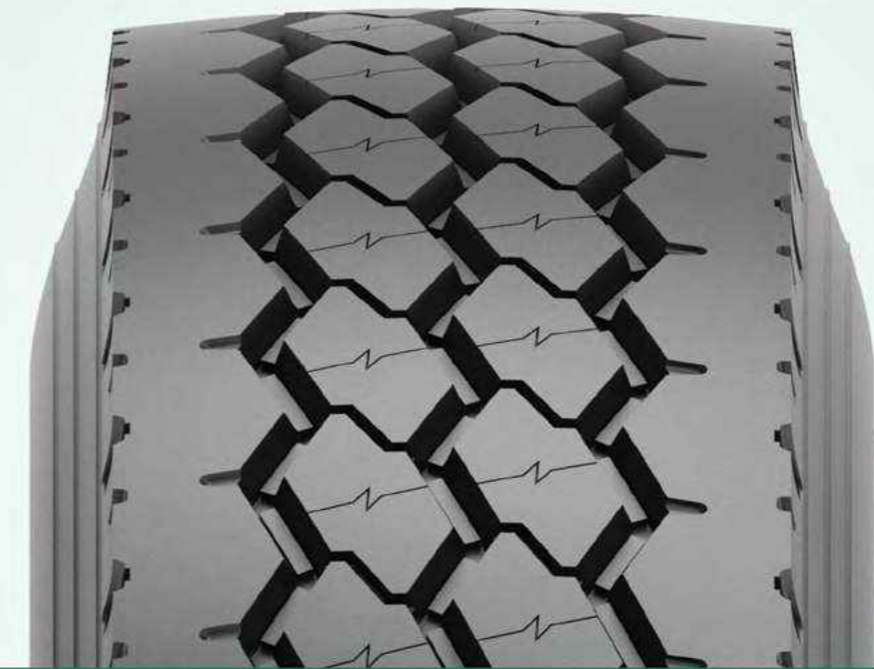


# TERRA MASTER GAM66



M+S

New generation all position tyre with latest technology for on & off op-eration.



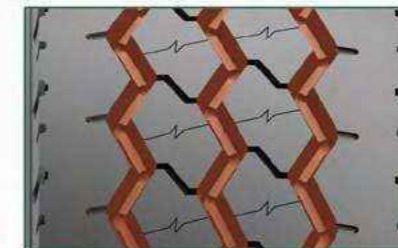
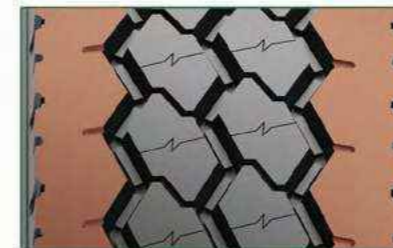
## TERRA MASTER GAM66

### TECHNICAL FEATURE

Wider tread width and solid shoulder offer improved tread stiffness, leading to an increased mileage .




Three zigzag grooves and multi-angular sipes improve traction and braking performance.

Polygonal block pattern provides outstanding traction and braking performance.



### SIZE RANGE All Axle



SIZE	PR	LI/SS	TREAD DEPTH (MM)	M+S				dB	
13R22.5	20	156/151K	16.5	✓	✓	D	C	73	B
315/80R22.5	20	156/153K	17.5	✓	✓	D	D	73	B



# TERRA MASTER GDM77



M+S

Premium tyre designed for drive position applicable for rough road surface.



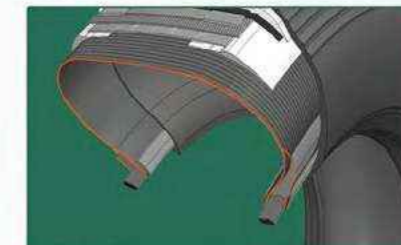
## TERRA MASTER GDM77

### TECHNICAL FEATURE

Aggressive direction tread with robust tread blocks providing extra traction for on/off road condition.



The reinforced bead construction provides excellent structural durability to extend tyre life.



Special rubber compound ensuring more resistance to cuts and tearing.



### SIZE RANGE Drive



SIZE	PR	LI/SS	TREAD DEPTH (MM)	M+S				dB	
13R22.5	20	156/151K	23	✓	✓	D	C	74	B
315/80R22.5	20	156/153K	23	✓	✓	D	D	74	B



# TERRA MASTER GAMSS



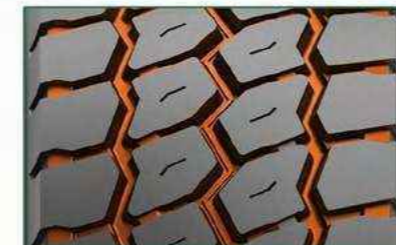
New strong casing multi-service tyre for on & off operation.



## TERRA MASTER GAMSS

### TECHNICAL FEATURE

Aggressive multi-service, all position tread pattern promises excellent traction in ON/OFF road service.



Outstanding self-cleaning tread design ensures long-life service in ON/OFF road conditions.






Robust tread blocks and rugged casing allows for heavy loads and resist casing penetration and damage.



### SIZE RANGE All Axle



SIZE	PR	LI/SS	TREAD DEPTH (MM)	M+S					dB	
385/65R22.5	20	160K(158L)	18	✓	✓	C	C	C	74	B
385/65R22.5	24	164K	18	✓	✓	C	C	C	74	B
425/65R22.5	20	165K	18	✓	✓	C	C	C	74	B
445/65R22.5	20	169K	18	✓	✓	C	C	C	74	B

## This image shows a full page of white paper with horizontal blue ruling lines. The lines are evenly spaced and run across the width of the page, providing a template for handwriting practice or general writing. There are no margins, text, or other markings on the page.

This image shows a single sheet of white paper with horizontal blue ruling lines. The lines are evenly spaced and run across the width of the page. There are no margins, text, or other markings on the paper.

[illegible][illegible]