

TRUCK & BUS

RADIAL

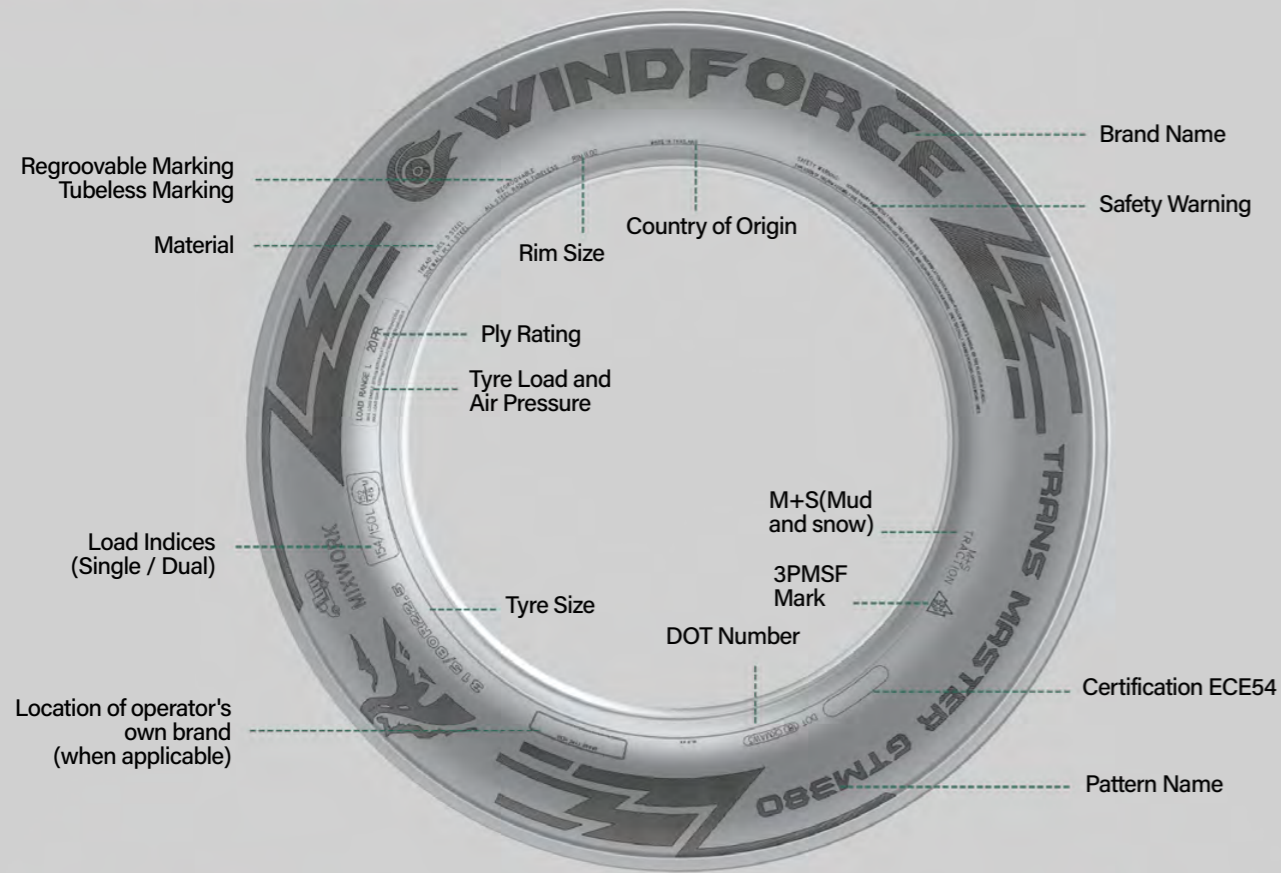
PRODUCT CATALOGUE

UPGRADING 2026

 **WINDFORCE**

ENJOY YOUR TRIPS WITH WINDFORCE TYRES

SIDEWALL DIAGRAM



LONG HAUL



REGIONAL



MIX SERVICE



MINE

HOW TO READ THE PROFILE NAME

TRANS MASTER
E A M 260

Product family name

Product Version

S → Steer Axle D → Drive Axle
T → Trailer Axle A → All Axle

L → Long Haul R → Regional
M → Mix Service / Mine

WINDFORCE

SINCE 2012

WINDFORCE provides safety and value for the global customers, is constantly striving to create the best solutions for each application.

WINDFORCE provides a wide variety of PCR/TBR to customers, based on the demand from local market.

WINDFORCE persists on green tires to protect the environment in a concept of low carbon development and lowers the rolling resistance of tires .

WINDFORCE supplied by global TOP 10 manufacturer, has perfect quality supervision system, after-sales system and quality certification system to guarantee the product quality and improve the customer satisfaction.

TYRE CONSTRUCTION

Tread

Compounds used in the tread depend on the tire's specific application needs. WINDFORCE has chosen various compounding strategies to minimize treadwear rate, and maximize traction, fuel efficiency, and resistance to fatigue, chipping and scaling.

Belts and Casing

Thin highly adhesive assembly compounds are used in WINDFORCE's tire casing and belts to prevent separation of the steel cords.

Belt Edge Cushion

WINDFORCE tires feature a belt edge cushion to help prevent separation of the belt edges, and therefore the tread, caused by the scissoring effect of the belts.

Undertread

WINDFORCE's undertread compounds have low heat-generating characteristics, which prevent tread separation.

Inner Liner

WINDFORCE's inner liner is specially designed to minimize air seepage into adjacent areas of the tire. The quality of the inner liner is critical to prevent air from penetrating into the casing. WINDFORCE's special inner liner compound ensures a significantly longer casing life.

Sidewall

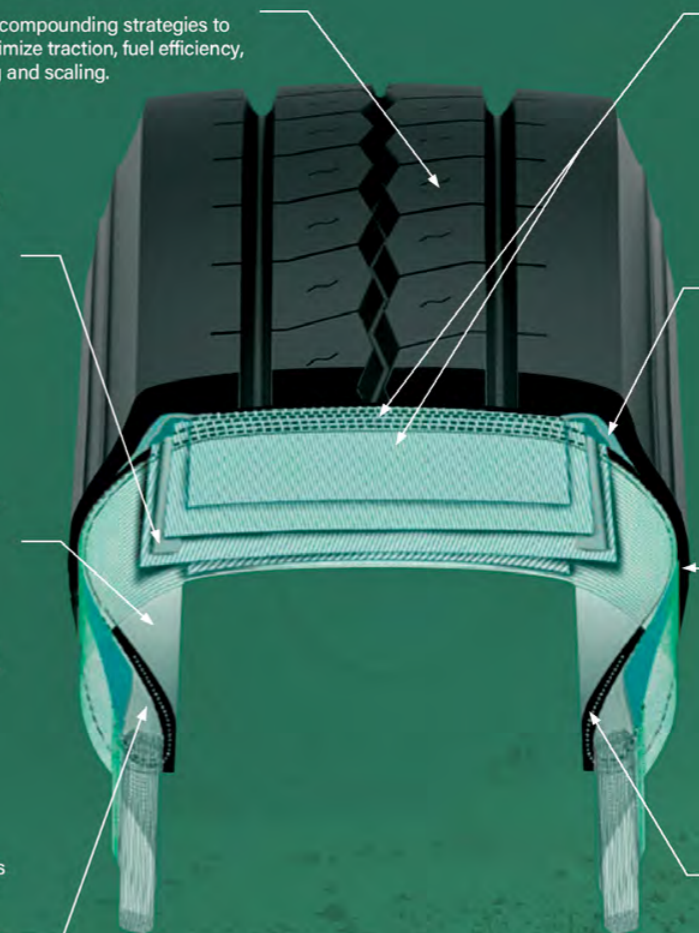
WINDFORCE's special sidewall compounds are selected for high flexibility, excellent durability and high resistance to fatigue and weather cracking.

Bead Filler

Two or more different compounds are used in WINDFORCE's bead filler (apex rubber) to stiffen the bead for steering response and to control the flexibility of other parts of the tire.

Rim Cushion

WINDFORCE's rim cushion compound is highly resistant to the heat transmitted by the rim.



TRANS MASTER FAMILY

LONG HAUL										
		ESL220	EDL320	GSL290	GDL390	ESL200	EDL300			
		L----03	L----05	L----07	L----09	L----11	L----13			
		STEER	DRIVE	STEER	DRIVE	STEER	DRIVE			
	REGIONAL									
			GSR210	GDR310	EAR230	EDR330	GTR280	ETR282		
			R----17	R----19	R----21	R----23	R----25	R----27		
		STEER	DRIVE	ALL AXLE	DRIVE	TRAILER	TRAILER			
MIX SERVICE										
			EAM260	EAM262	EDM360	EDM362	EAM270	EAM272	EDM372	GTM380
			M----31	M----33	M----35	M----37	M----39	M----41	M----43	M----45
		ALL AXLE	ALL AXLE	DRIVE	DRIVE	ALL AXLE	ALL AXLE	DRIVE	TRAILER	
	MINE									
			EDM370							
			M----49							
		DRIVE								

APPLICATIONS



Long-range travel with consistent speed and less braking or accelerating. Well paved road surface with fewer curves.



Journeys with repeated braking, acceleration, and turning. Well-paved road with curves and occasionally rough conditions.



Both on and off road with aggressive, uneven or muddy road conditions. Heavy loads at medium to slow speeds and frequent stopping.

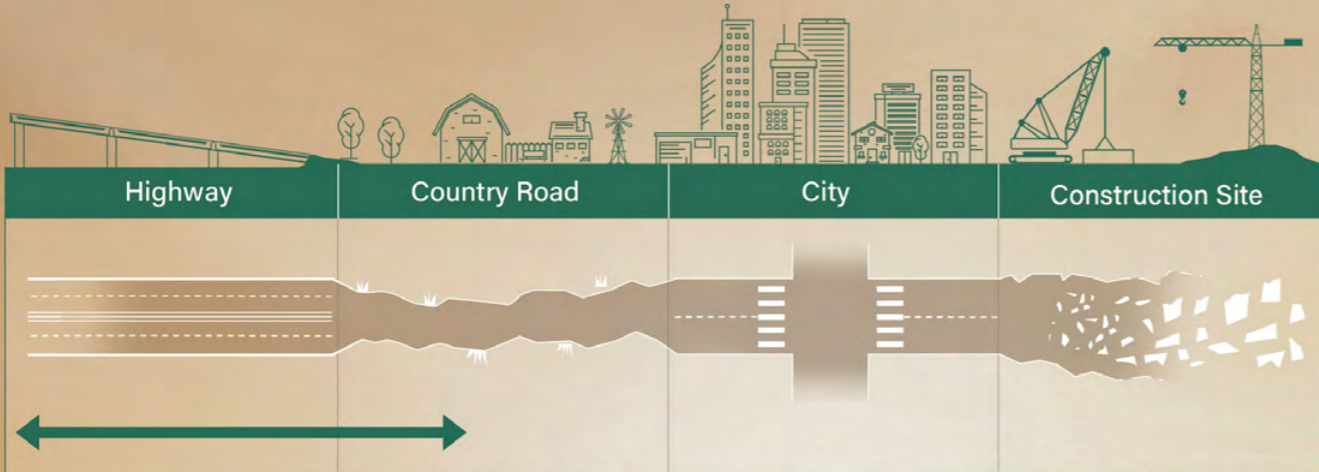


Engineered primarily for off road conditions with deep, wide treads for high mobility. Powerful construction ensures durability and long life. An open shoulder offers maneuvering while large tread blocks and special compound resist cuts and penetrations.

THE LONG HAUL SERIES



- Long distance journey with constant speed and less braking and accelerating.
- Less fuel consumption and comfortable ride.
- High mileage performance.



Special low heat compound design

Special compound design, low heat generation during tire running, low CO₂, energy saving and environmental protection.



Optimized pattern design

The optimized design of pattern, high Land-sea ratio pattern design effectively reduce the rolling resistance of tires, more fuel efficient.



Advanced tire design theory

Advanced tire design concepts, make the tire longevity, green and safety.



**TRANS MASTER
ESL220**



**TRANS MASTER
EDL320**



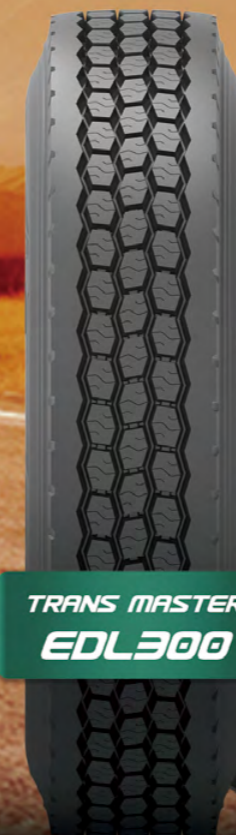
**TRANS MASTER
GSL290**



**TRANS MASTER
GDL390**



**TRANS MASTER
ESL200**



**TRANS MASTER
EDL300**



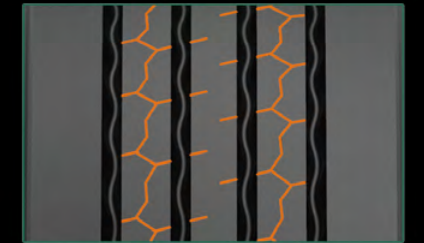
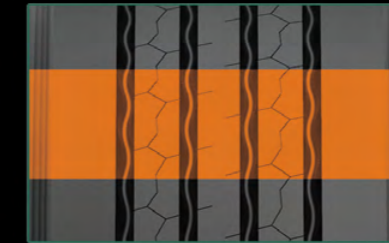
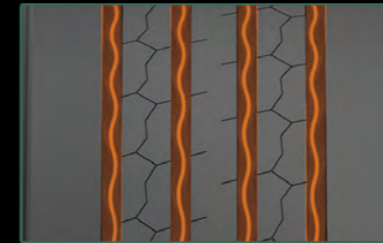
TRANS MASTER ESL220

TECHNICAL FEATURE

Four curved tread grooves ensure good drainage performance.

Special designed tread pitches ensure low external noise.

Multi kerf provides outstanding traction on wet and snow road surface.



SIZE RANGE STEER

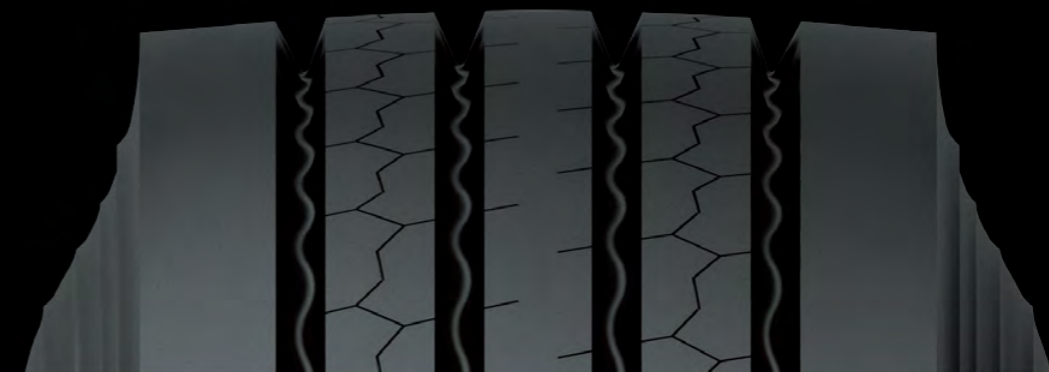


SIZE	LI/SS	PR	STANDARD RIM	TREAD DEPTH (MM)	OVERALL DIAMETER (MM)	SECTION WIDTH (MM)
7.50R15LT	135/133J	16	6.00G	13.0	780	215
7.00R16LT	118/114L	14	5.50F	10.0	775	200
7.50R16LT	123/119L	14	6.00G	12.0	805	215
7.50R16LT	122/118L	16	6.00G	12.0	805	215
10.00R20	149/146K	18	7.5	16.0	1054	278
11.00R20	150/147K	16	8.0	15.0	1085	293
11.00R20	152/149K	18	8.0	15.0	1085	293
12.00R20	156/153K	20	8.5	16.0	1125	315
11R22.5	148/145M	18	8.25	14.2	1054	279
12R22.5	152/149L	18	9.00	14.5	1085	300
275/70R22.5	148/145L	16	8.25	14.0	958	276
275/80R22.5	149/146M	18	8.25	14.0	1012	276
295/80R22.5	152/149M	18	9.00	13.5	1044	298
315/80R22.5	157/154K	20	9.00	14.5	1076	312
385/55R22.5	160K	20	12.25	13.0	919	386
385/65R22.5	160K	20	11.75	13.0	1072	389

TRANS MASTER ESL220



Steer type tyre for highway use, both long and regional haul.



TRANS MASTER EDL320

TECHNICAL FEATURE

Deep tread depth improves traction and grip on the road and extends tire life.



Optimized deep multi-blocks pattern design provides ultra driving force.



Widened tread width enhances driving stability and provides even pressure distribution.



TRANS MASTER EDL320



Superior drive tyre for highway use.

SIZE RANGE DRIVE



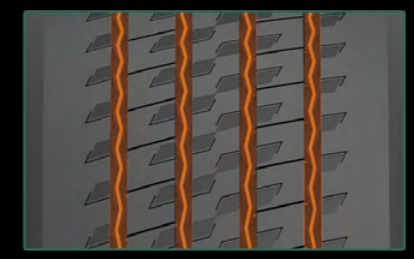
SIZE	LI/SS	PR	STANDARD RIM	TREAD DEPTH (MM)	OVERALL DIAMETER (MM)	SECTION WIDTH (MM)
11R22.5	148/145M	18	8.25	19.0	1065	279
12R22.5	152/149L	18	9.00	19.0	1096	300
295/80R22.5	152/149L	18	9.00	19.0	1050	298
315/80R22.5	157/154K	20	9.00	19.0	1082	312



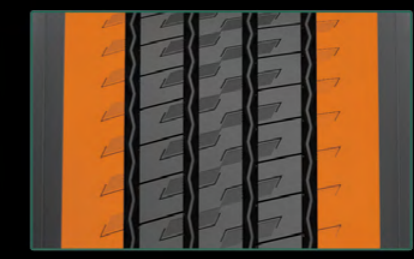
TRANS MASTER GSL290

TECHNICAL FEATURE

Fashionable pattern design, with strong longitudinal ribs and heat-releasing sipes provides excellent handling.



Optimized tire shoulder effectively reduce abnormal tread wear.



Wider and deeper pattern, with high mileage tread compound, longer product life.



TRANS MASTER GSL290

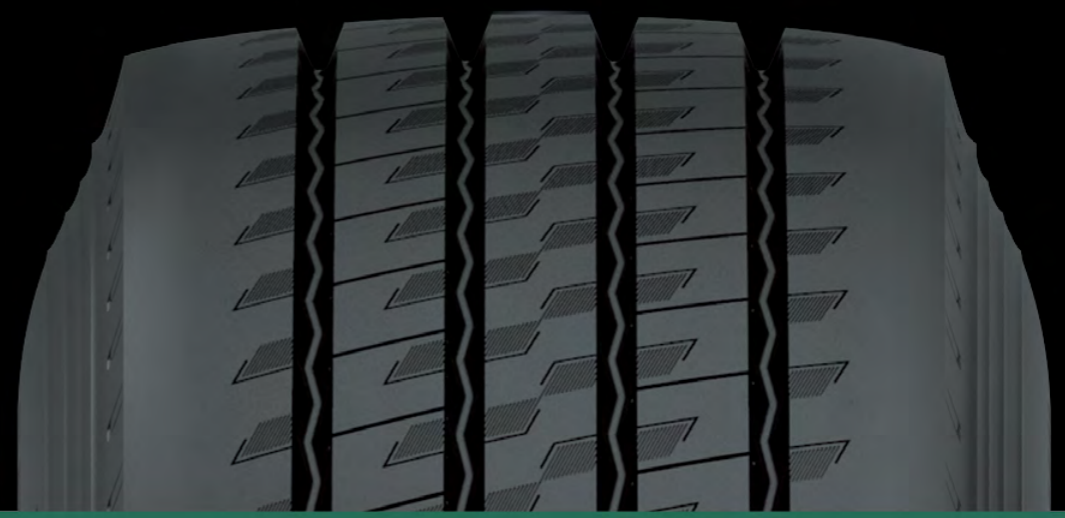


Steer type tyre for highway use, both long and regional haul.

SIZE RANGE STEER



SIZE	LI/SS	PR	STANDARD RIM	TREAD DEPTH (MM)	OVERALL DIAMETER (MM)	SECTION WIDTH (MM)
315/70R22.5	156/150L	20	9.00	15.0	1014	312
315/80R22.5	160/157K	22	9.00	16.0	1076	312
385/65R22.5	164K	24	11.75	15.0	1072	389



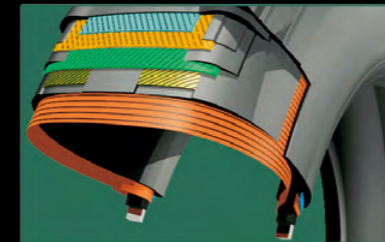
TRANS MASTER GDL390

TECHNICAL FEATURE

Impressive traction and fashionable driving tread pattern enhances traction in all kinds of weather conditions, which can help keep drivers safer on the road.

Enhanced durability casing construction and a cap/base compound combines for better durability and exceptional re-groovability.

Deep full depth grooves with zig-zag grooves, and anti-wearing compounding provides Long original tread life with excellent traction throughout the life of the tire.



TRANS MASTER GDL390



Superior drive tyre for highway use.



SIZE RANGE DRIVE



SIZE	LI/SS	PR	STANDARD RIM	TREAD DEPTH (MM)	OVERALL DIAMETER (MM)	SECTION WIDTH (MM)
315/70R22.5	154/150L	20	9.00	20.0	1020	312
315/80R22.5	160/157K	22	9.00	22.5	1082	312



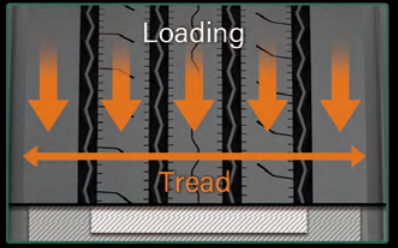
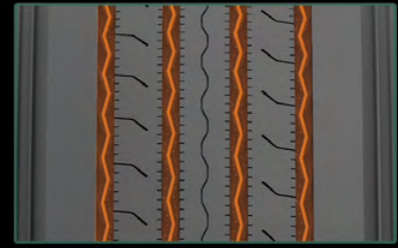
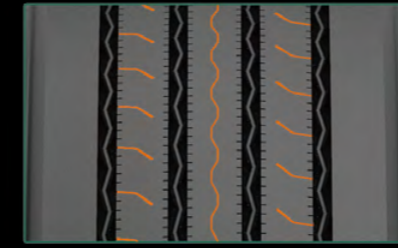
TRANS MASTER ESL200

TECHNICAL FEATURE

Lateral & semi-groove sipe optimize provide better traction and enhance even wear for superior performance.

Four curved tread grooves ensure great drainage performance.

Expanded belt provides equal road grip which results in even wear and better performance.



TRANS MASTER ESL200

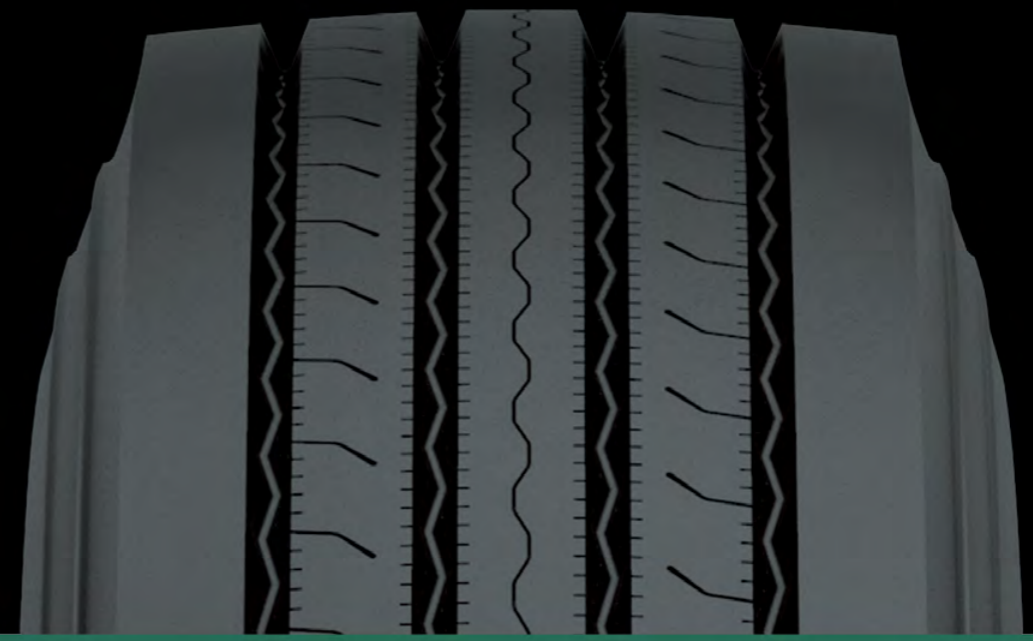


Steer type tyre for highway use, both long and regional haul.

SIZE RANGE STEER



SIZE	LI/SS	PR	STANDARD RIM	TREAD DEPTH (MM)	OVERALL DIAMETER (MM)	SECTION WIDTH (MM)
11R22.5	149/146M	18	8.25	13.0	1054	279
11R24.5	152/149M	18	8.25	14.2	1104	279



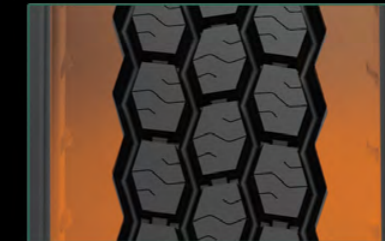
TRANS MASTER EDL300

TECHNICAL FEATURE

Main 4 zigzag groove provides good traction performance.



Closed shoulder delivers smooth wear, fuel efficiency and reinforced stability.



Special tread compound guarantees less fuel consumption with lower rolling resistance.



TRANS MASTER EDL300



Superior drive tyre for highway use.



SIZE RANGE DRIVE



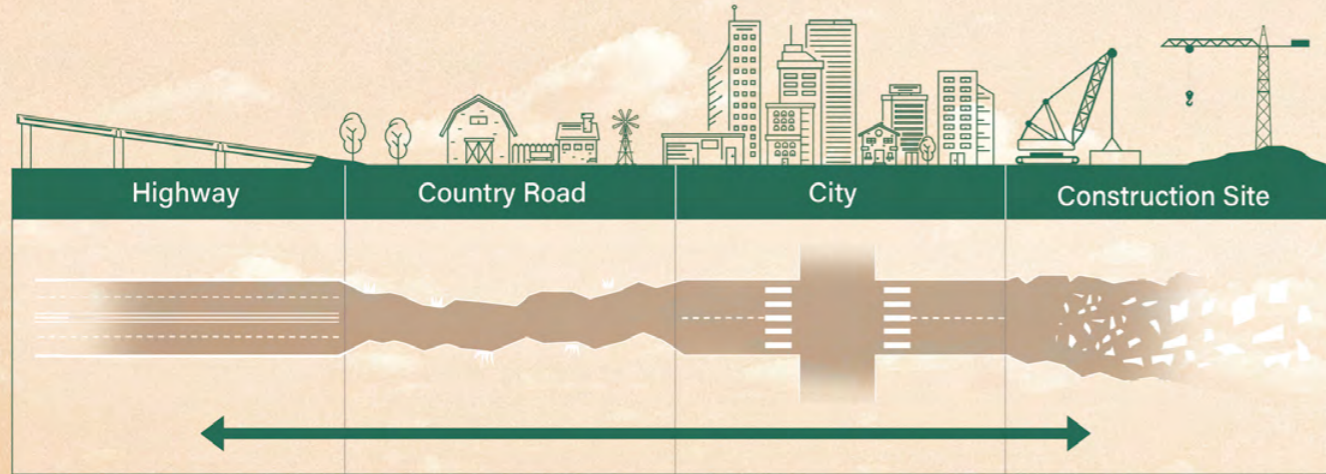
SIZE	LI/SS	PR	STANDARD RIM	TREAD DEPTH (MM)	OVERALL DIAMETER (MM)	SECTION WIDTH (MM)
11R22.5	149/146L	18	8.25	20.6	1065	279
11R24.5	152/149L	18	8.25	20.6	1116	279



THE REGIONAL SERIES



- Shorter journey with frequent braking, accelerating and turning
- Improved road grip with maximum mileage
- Exceptional tough type



Shoulder Rigidity Reinforced Design

By optimizing the overall material distribution of the tyre, the rigidity and handling stability of the tyre have been greatly improved.



Ultra-High Tensile Cord

The UHT carcass cords provide better anti-deformation performance for the tyre, while at the same time better dispersing the pressure and significantly increasing the safety performance of the tyre.



Upgraded security features

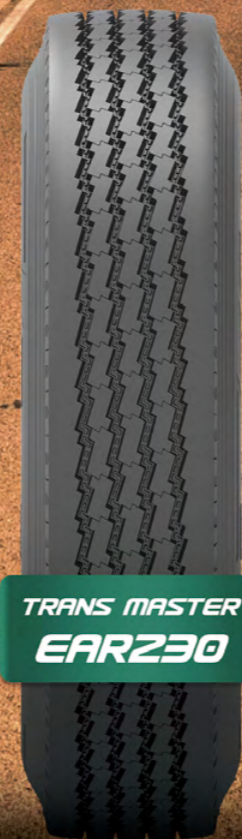
Excellent stability and durability, even in challenging weather conditions.



TRANS MASTER
GSR210



TRANS MASTER
GDR310



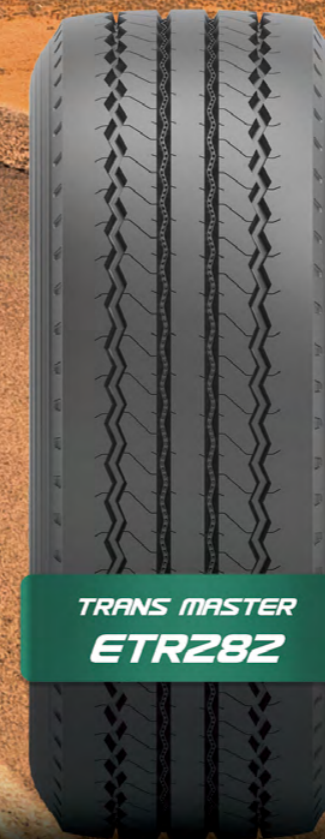
TRANS MASTER
EAR230



TRANS MASTER
EDR330



TRANS MASTER
GTR280



TRANS MASTER
ETR282

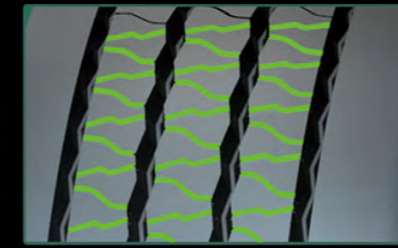


WINDFORCE
WVF

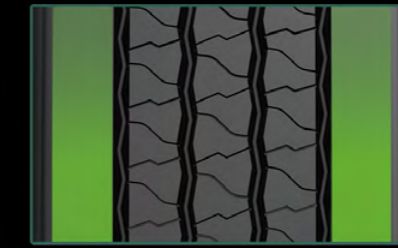
TRANS MASTER GSR210

TECHNICAL FEATURE

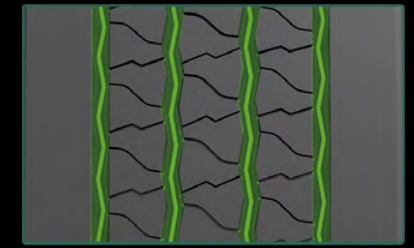
Combination of stream and zigzag grooves provides better performance for traction and driving.



Strong closed shoulder design provides a stability and better performance for even wear.



Deeper groove and wider tread provide longer tread life. Unique tread design helps decrease stone retention.



SIZE RANGE STEER



SIZE	LI/SS	PR	STANDARD RIM	TREAD DEPTH (MM)	OVERALL DIAMETER (MM)	SECTION WIDTH (MM)
205/85R16LT	117/115L	14	5 1/2J	8.5	754	203
225/80R17.5	132/129L	18	6.75	13.0	805	226
9.5R17.5	143/141J	18	6.75	13.0	842	240
215/75R17.5	135/133M	18	6.00	12.5	767	211
235/75R17.5	143/141M	18	6.75	13.3	797	233
245/70R19.5	141/140J	18	7.5	12.5	839	248
265/70R19.5	143/141J	18	7.5	12.5	867	262
285/70R19.5	150/148J	18	8.25	13.0	895	283
305/70R19.5	148/145M	20	9.00	14.0	923	305

TRANS MASTER GSR210



Steer type tyre for regional use. Also recommended for drive and trailer use.





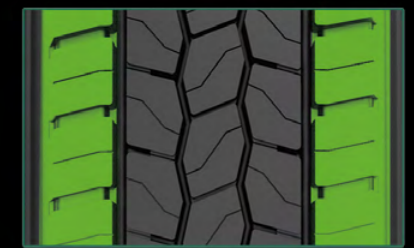
TRANS MASTER GDR310

TECHNICAL FEATURE

Wide tread with grooves enables high mileage and excellent driving performance in variable conditions.

Special tread pattern design for low rolling resistance and excellent traction performance across multi applications.

Wide open shoulder tread design provides traction and stability in all weather conditions.



SIZE RANGE DRIVE



SIZE	LI/SS	PR	STANDARD RIM	TREAD DEPTH (MM)	OVERALL DIAMETER (MM)	SECTION WIDTH (MM)
215/75R17.5	135/133M	18	6.00	14.5	767	211
235/75R17.5	143/141M	18	6.75	15.4	797	233
265/70R19.5	143/141J	18	7.5	15.5	867	262
285/70R19.5	150/148J	18	8.25	16.0	895	283
305/70R19.5	148/145M	20	9.00	16.0	923	305

TRANS MASTER GDR310



Recomendable

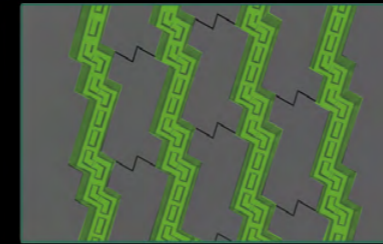
Superior drive tyre for regional use.



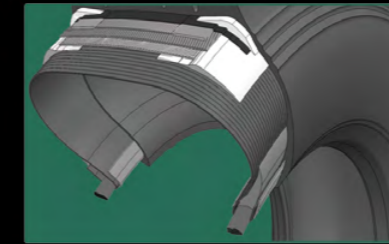
TRANS MASTER EAR230

TECHNICAL FEATURE

Zigzag circumferential grooves offer outstanding wet operation and even tread contact on road surfaces.



Advanced carcass design promises good footprints and avoid irregular wear.



Low heat generating and excellent high-speed driving characteristics.



TRANS MASTER EAR230



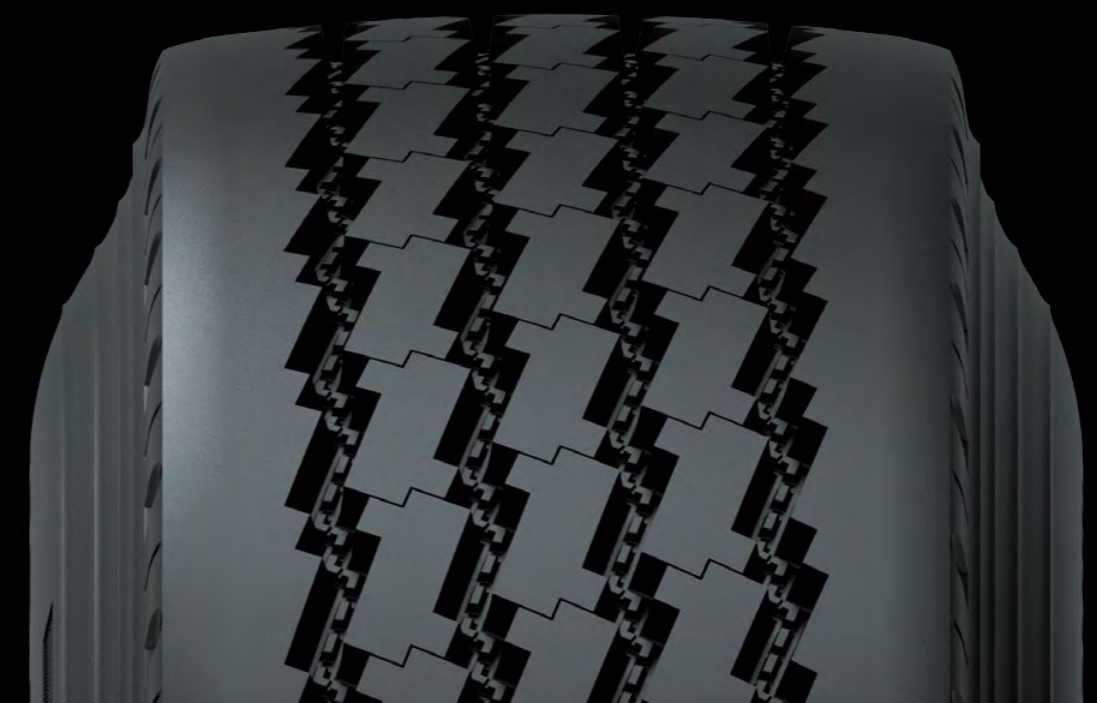
All position tyre for regional use.
Also recommended for trailer use.



SIZE RANGE ALL AXLE



SIZE	LI/SS	PR	STANDARD RIM	TREAD DEPTH (MM)	OVERALL DIAMETER (MM)	SECTION WIDTH (MM)
11R22.5	148/145M	18	8.25	13.0	1054	279



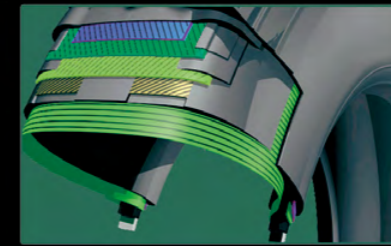
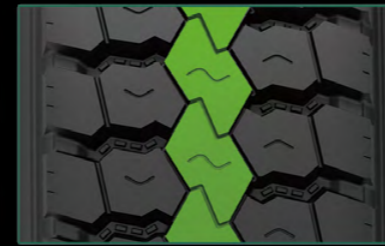
TRANS MASTER EDR330

TECHNICAL FEATURE

Premium open drive with superb traction. Central interlocking tread pattern to handle even the most demanding haul applications.

Extra strong casing for durability and excellent regroovable.

Optimised rubber compound for resisting cutting and chunking.



SIZE RANGE DRIVE



SIZE	LI/SS	PR	STANDARD RIM	TREAD DEPTH (MM)	OVERALL DIAMETER (MM)	SECTION WIDTH (MM)
11R22.5	148/145M	18	8.25	19.0	1065	279

TRANS MASTER EDR330



Superior drive tyre for regional use.

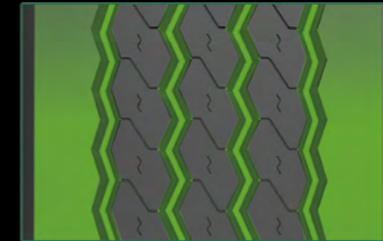




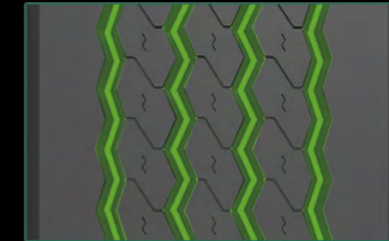
TRANS MASTER GTR280

TECHNICAL FEATURE

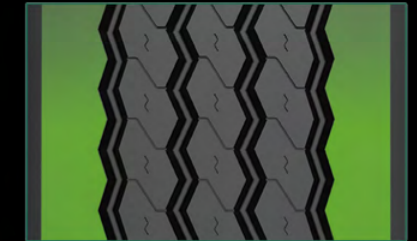
Four main grooves strengthened shoulder rib reduces deformation of outer groove and improves mileage.



Zigzag groove aids in stone rejection.



Closed shoulder allows for smooth wear, fuel efficiency and increased mileage.



TRANS MASTER GTR280



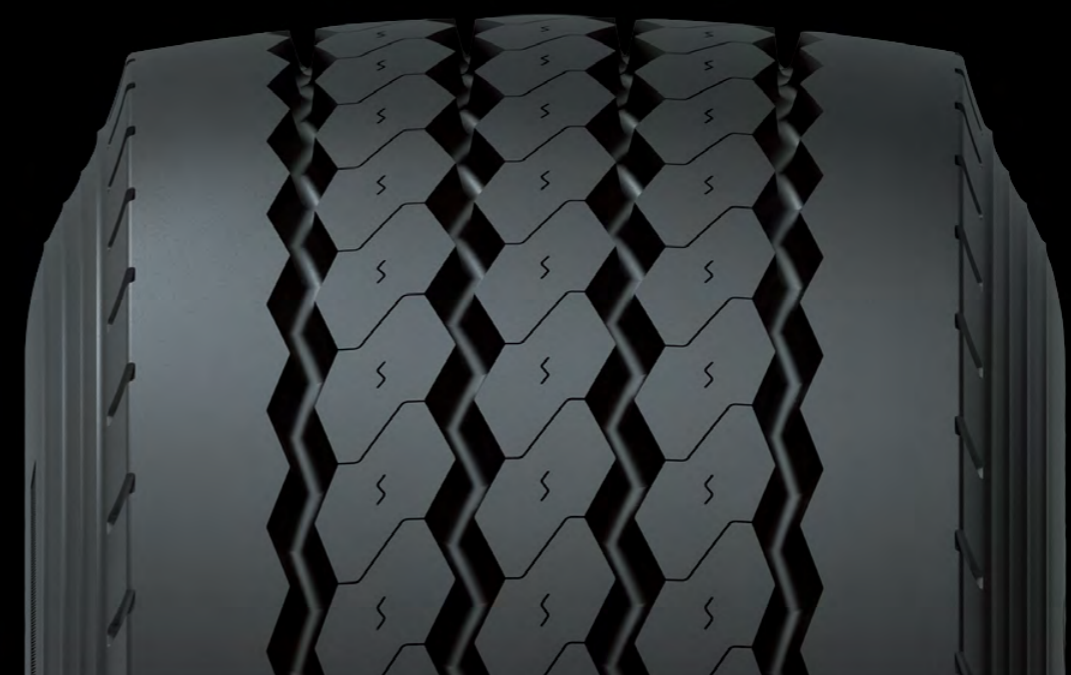
Trailer type tyre for regional use, both long and regional haul.



SIZE RANGE TRAILER



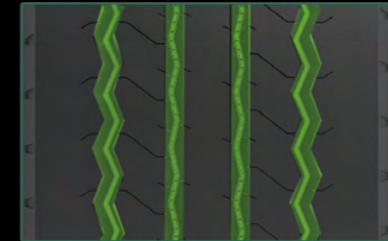
SIZE	LI/SS	PR	STANDARD RIM	TREAD DEPTH (MM)	OVERALL DIAMETER (MM)	SECTION WIDTH (MM)
385/65R22.5	164K	24	11.75	15.5	1072	389



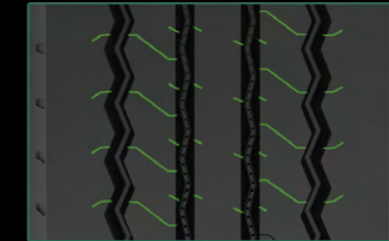
TRANS MASTER ETR282

TECHNICAL FEATURE

Four grooves with zigzag designed provide excellent groove crack prevention.



Multi kerf provides outstanding traction on wet and snow road surface.



Wider shoulder helps even wear and longer mileage.



SIZE RANGE TRAILER



SIZE	LI/SS	PR	STANDARD RIM	TREAD DEPTH (MM)	OVERALL DIAMETER (MM)	SECTION WIDTH (MM)
385/55R22.5	160K	20	12.25	14.5	919	386
385/65R22.5	160K	20	11.75	14.5	1072	389

TRANS MASTER ETR282



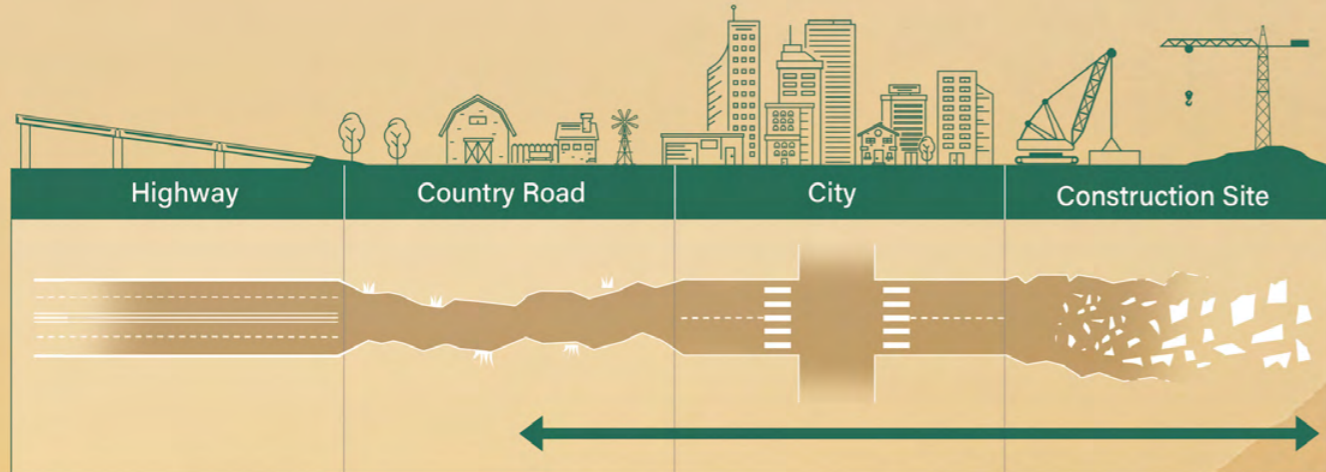
Trailer type tyre for regional use, both long and regional haul.



THE MIX SERVICE SERIES



- Used both on and off road
- Heavy loads and outstanding durability
- Special protection against the damage caused by the road condition



Reinforced bead structure design

The reinforced structure of the tire bead is used to meet the load demand in the ON/OFF application, and the product life is longer.



Special cutting resistance compound design

Special cutting resistance compound helps resist chipping, chunking and tearing for a better mileage.



High tensile cord design

High tensile cord is used in tyres to ensure their load capacity and safety in harsh operating environments.



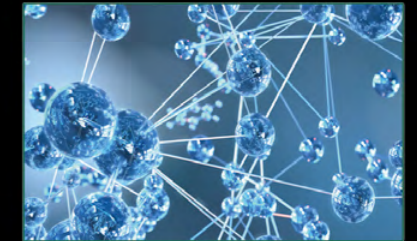
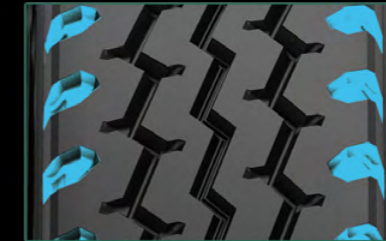
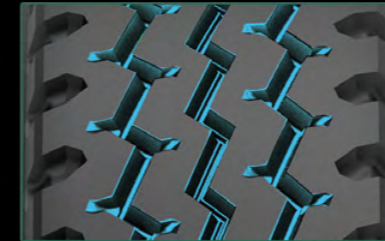
TRANS MASTER EAM260

TECHNICAL FEATURE

Four rib design with zigzag patterns for stone protection.

Deep arrowhead shoulder grooves for maximum traction in rough terrain situations.

Unique compound, with extra-deep tread design, for extended tread life.



TRANS MASTER EAM260



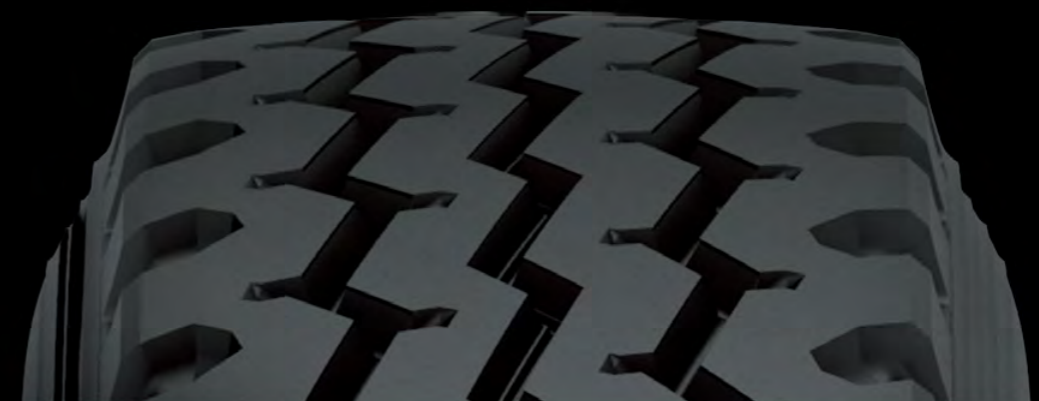
All position tyre for on/off road applications. Offers excellent resistance to cutting and chipping.



SIZE RANGE ALL AXLE



SIZE	LI/SS	PR	STANDARD RIM	TREAD DEPTH (MM)	OVERALL DIAMETER (MM)	SECTION WIDTH (MM)
7.00R16LT	118/114L	14	5.50F	10.0	775	200
7.50R16LT	122/118L	16	6.00G	11.0	805	215
9.00R20	144/142K	16	7.0	15.0	259	1019
10.00R20	146/143K	16	7.5	16.0	1054	278
10.00R20	149/146K	18	7.5	16.0	1054	278
11.00R20	152/149K	18	8.0	15.0	1085	293
12.00R20	156/153K	20	8.5	17.5	1125	315
12.00R24	160/156K	20	8.5	14.0	1226	315
11R22.5	148/145M	18	8.25	15.0	1054	279
12R22.5	152/149L	18	9.00	14.5	1085	300
13R22.5	156/151K	20	9.75	16.5	1124	320
295/80R22.5	152/149M	18	9.00	15.0	1044	298
315/80R22.5	157/154K	20	9.00	15.5	1076	312





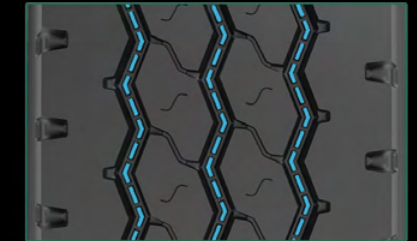
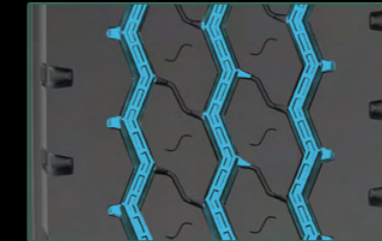
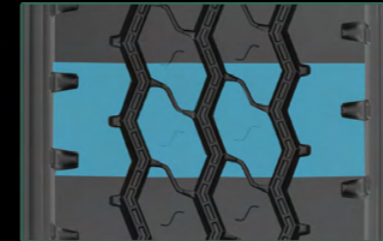
TRANS MASTER EAM262

TECHNICAL FEATURE

Wide, deep tread helps provide long tread life in regional conditions.

Zig-zag groove help improve traction on wet and muddy surface.

Stone ejector in the groove protect belt from stone drilling.



SIZE RANGE ALL AXLE

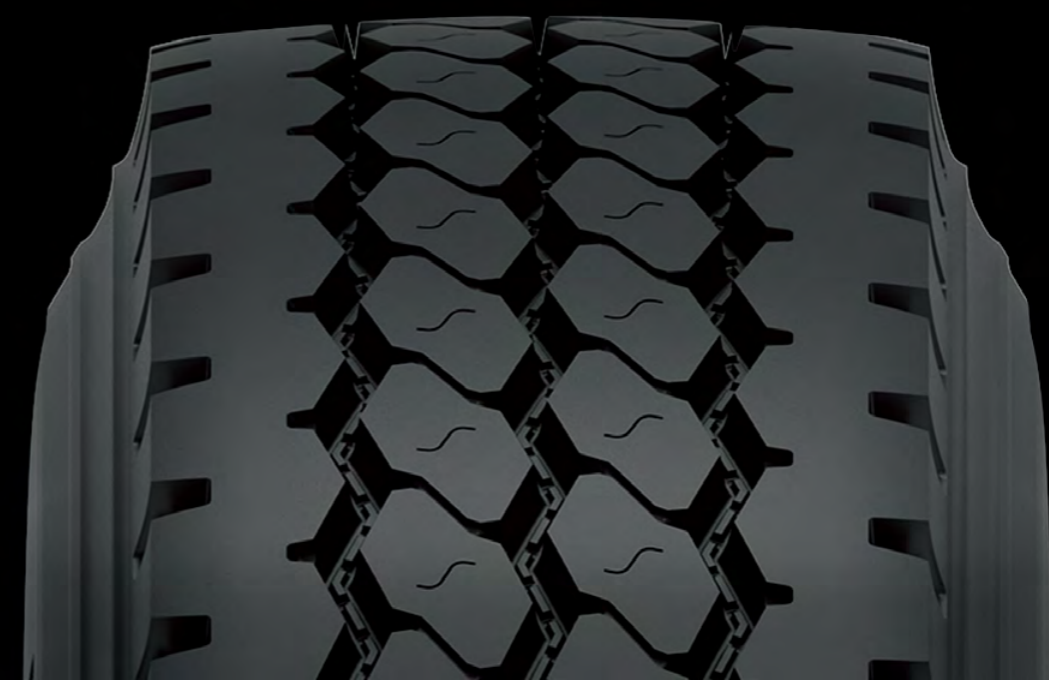


SIZE	LI/SS	PR	STANDARD RIM	TREAD DEPTH (MM)	OVERALL DIAMETER (MM)	SECTION WIDTH (MM)
11.00R20	152/149K	18	8.0	16.0	1085	293
12.00R20	156/153K	20	8.5	16.5	1125	315
11R22.5	148/145M	18	8.25	15.0	1054	279
13R22.5	156/153K	20	9.75	15.0	1124	320
315/80R22.5	157/154K	20	9.00	15.0	1076	312

TRANS MASTER EAM262



All position tyre for on/off road applications. Offers excellent resistance to cutting and chipping.



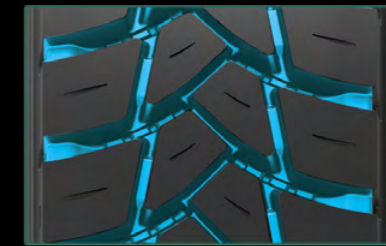
TRANS MASTER EDM360

TECHNICAL FEATURE

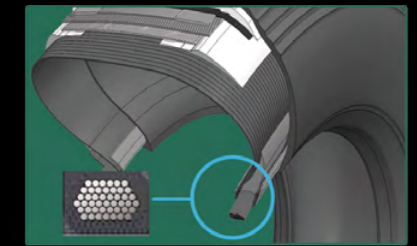
The arrow-directional pattern is adopted for excellent handling meaning better traction performance is provided even in wet and muddy conditions.



The interblock tie-bar at the centre guarantees outstanding straight driving performance and impact dispersion for blocks, thereby improving durability.



Rigid carcass structure for robust, hardwearing, safe and reliable service.



TRANS MASTER EDM360



Superior drive tyre for on/off road applications.

SIZE RANGE DRIVE



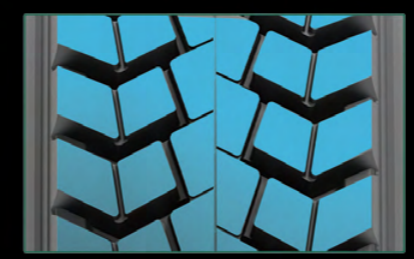
SIZE	LI/SS	PR	STANDARD RIM	TREAD DEPTH (MM)	OVERALL DIAMETER (MM)	SECTION WIDTH (MM)
11R22.5	148/145K	18	8.25	19.5	1065	279
12R22.5	152/149L	18	9.00	19.5	1096	300
13R22.5	156/151K	20	9.75	19.0	1136	320
295/80R22.5	152/149K	18	9.00	19.5	1050	298
315/80R22.5	157/154K	20	9.00	20.0	1082	312



TRANS MASTER EDM362

TECHNICAL FEATURE

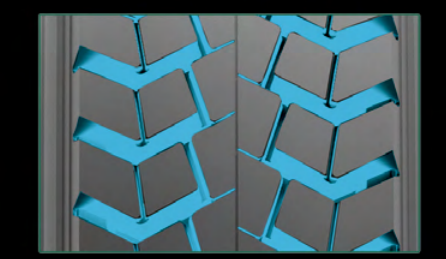
Wide tread and open shoulder blocks help enhance traction and braking on rough roads with mud or gravel.



Special tread compounds resist chipping, chunking and tearing.



Deep tread depth helps provide long tread life in regional conditions.



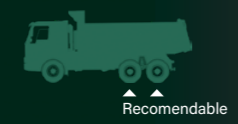
SIZE RANGE DRIVE



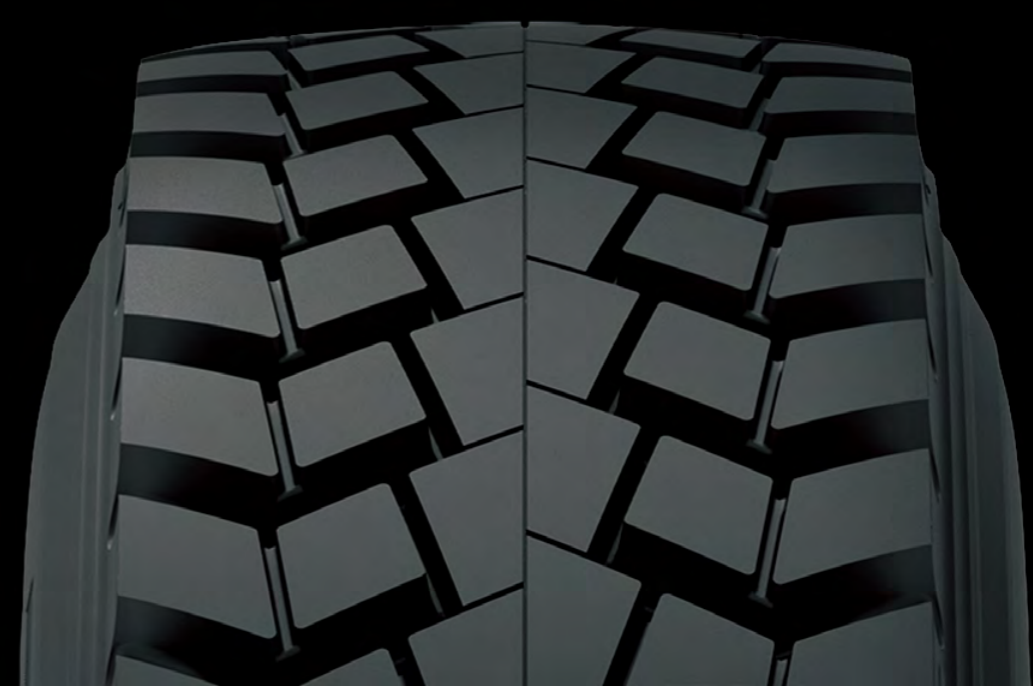
SIZE	LI/SS	PR	STANDARD RIM	TREAD DEPTH (MM)	OVERALL DIAMETER (MM)	SECTION WIDTH (MM)
11R22.5	148/145K	18	8.25	23.0	1065	279



TRANS MASTER EDM362



Superior drive tyre for on/off road applications.



TRANS MASTER EAM270

TECHNICAL FEATURE

Wider tread width and solid shoulder offer improved tread stiffness, leading to an increased mileage and rolling resistance.



Three zigzag grooves and multi-angular sipes improve traction and braking performance.



Polygonal block pattern provides outstanding traction and braking performance.



SIZE RANGE ALL AXLE

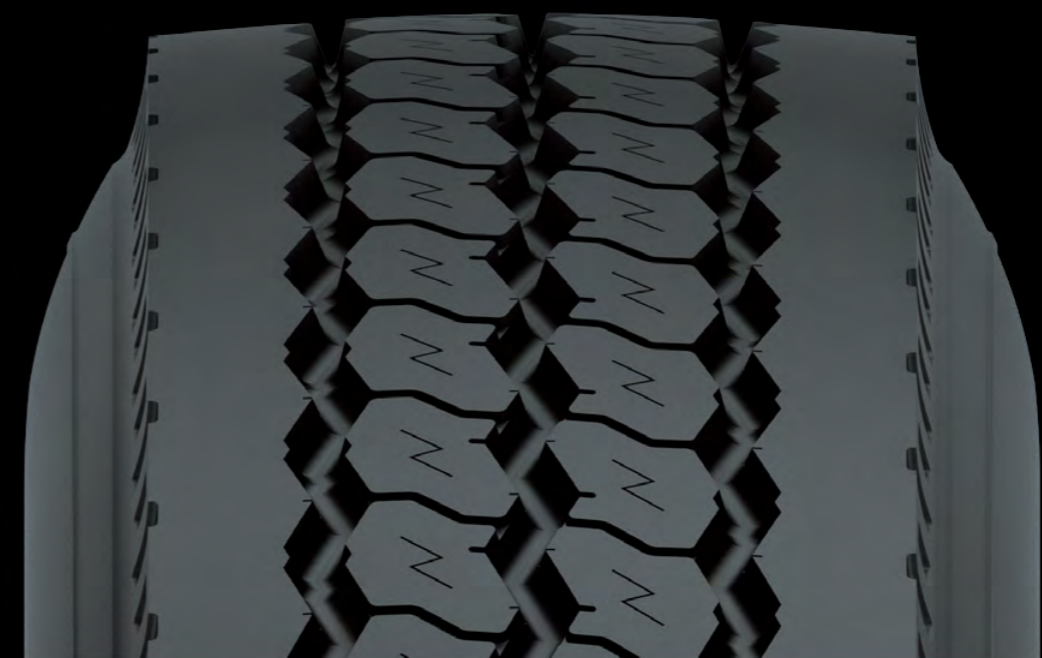


SIZE	LI/SS	PR	STANDARD RIM	TREAD DEPTH (MM)	OVERALL DIAMETER (MM)	SECTION WIDTH (MM)
12.00R24	160/156K	20	8.5	15.0	1226	315

TRANS MASTER EAM270



All position tyre for on/off road applications. Offers excellent resistance to cutting and chipping.



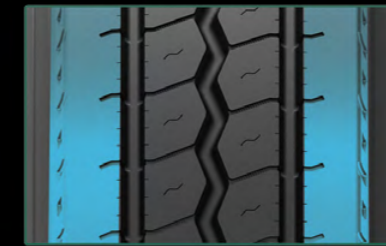
TRANS MASTER EAM272

TECHNICAL FEATURE

Combination of straight and zigzag grooves provides better performance for traction and driving.

A closed shoulder design and big block design are adopted for improved driving stability and an even wear.

Optimised rubber compound for resisting cutting and chipping.



TRANS MASTER EAM272



All position tyre for on/off road applications. Offers excellent resistance to cutting and chipping.



SIZE RANGE ALL AXLE



SIZE	LI/SS	PR	STANDARD RIM	TREAD DEPTH (MM)	OVERALL DIAMETER (MM)	SECTION WIDTH (MM)
12.00R24	160/156K	20	8.5	15.0	1226	315
325/95R24	162/160K	22	9.00	15.0	1228	325



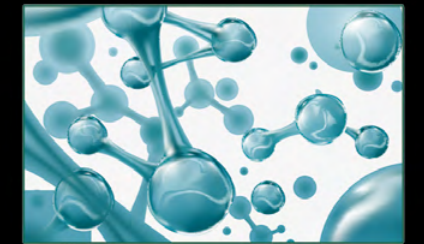
TRANS MASTER EDM372

TECHNICAL FEATURE

Optimal shoulder design - Minimises tread damage and retreading cost.

Aggressive lug design - Delivers powerful on/off-road grip, handling and stability.

Advanced carcass and compound construction - Provides excellent durability and extended tyre life due to low heat generation.



SIZE RANGE DRIVE



SIZE	LI/SS	PR	STANDARD RIM	TREAD DEPTH (MM)	OVERALL DIAMETER (MM)	SECTION WIDTH (MM)
225/80R17.5	132/129L	18	6.75	15.8	805	226
7.00R16LT	118/114L	14	5.50F	14.0	785	200
7.50R16LT	122/118L	16	6.00G	15.5	815	215
9.00R20	144/142K	16	7.0	15.0	259	1019
10.00R20	149/146K	18	7.5	18.0	1065	278
11.00R20	152/149K	18	8.0	16.0	1085	293
12.00R20	156/153K	20	8.5	19.5	1136	315
12.00R24	162/160K	22	8.5	19.0	1238	315
325/95R24	162/160K	22	9.00	19.0	1228	325

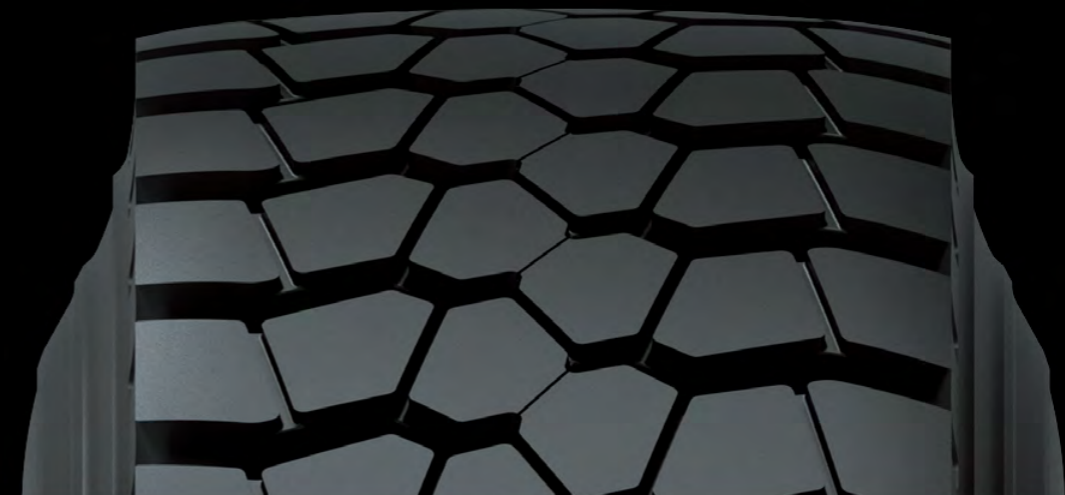
TRANS MASTER EDM372



Recomendable

Recomendable

Superior drive tyre for on/off road applications.





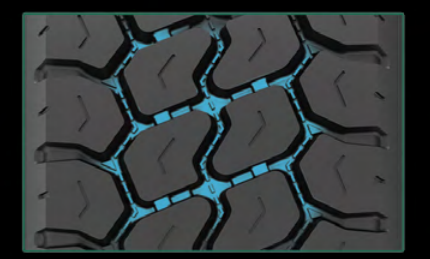
TRANS MASTER GTM380

TECHNICAL FEATURE

Extra-wide tread blocks and deep grooves ensure ultra-high mileage.

Open shoulder blocks with optimized tie-bars prevent irregular wear and provide excellent traction performance for off-road conditions.

Extra-wide grooves are designed for excellent stone rejection and improved traction.



SIZE RANGE TRAILER



SIZE	LI/SS	PR	STANDARD RIM	TREAD DEPTH (MM)	OVERALL DIAMETER (MM)	SECTION WIDTH (MM)
385/65R22.5	164K	24	11.75	18.0	1072	389

TRANS MASTER GTM380



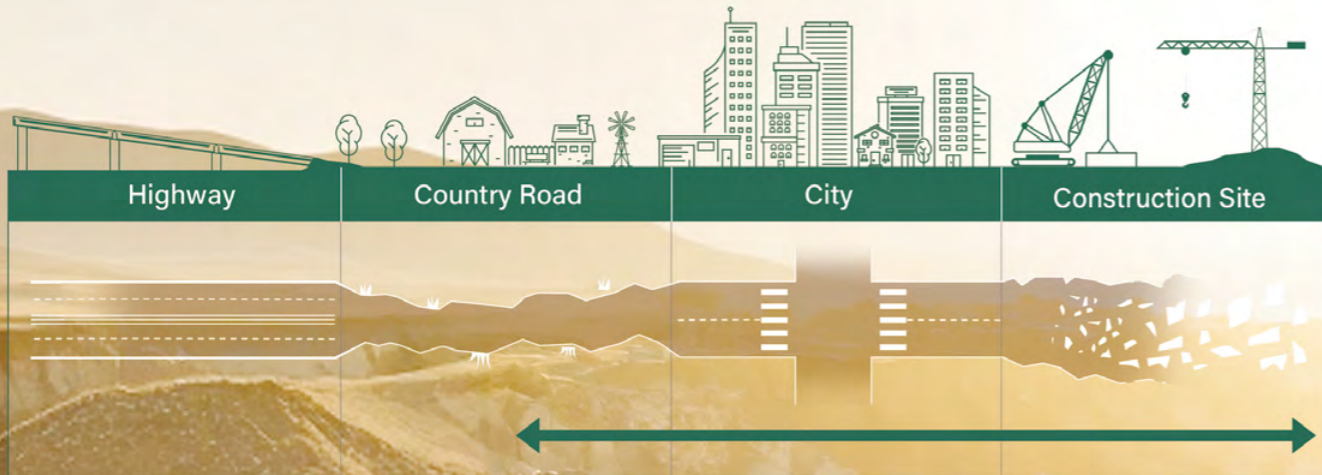
Trailer tyre for on/off road applications. Offers excellent resistance to cutting and chipping.



THE MINE SERVICE SERIES



- Used both on and off road
- Heavy loads and outstanding durability
- Special protection against the damage caused by the road condition



Reinforced bead structure design

The reinforced structure of the tire bead is used to meet the load demand in the ON/OFF application, and the product life is longer.



Special cutting resistance compound design

Special cutting resistance compound helps resist chipping, chunking and tearing for a better mileage.



High tensile cord design

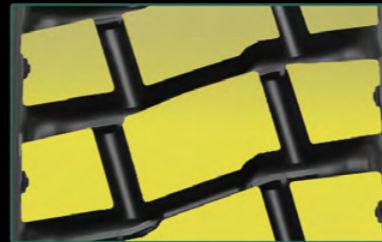
High tensile cord is used in tyres to ensure their load capacity and safety in harsh operating environments.



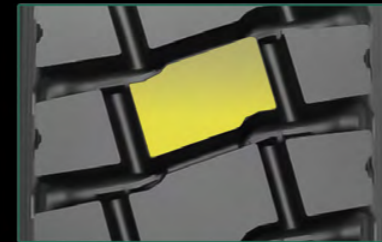
TRANS MASTER EDM370

TECHNICAL FEATURE

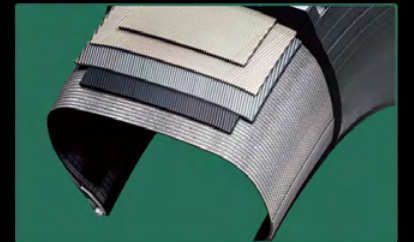
Aggressive lug tread pattern with open shoulder enhances powerful grip and improves self-cleaning capability.



Tread blocks massive tread blocks and specific tread compound offer superb resistance against cuts and penetrations.



Optimised carcass profile with reinforced bead structure ensures excellent durability.



TRANS MASTER EDM370



Drive axle, Off use in mining, construction and logging operations.

SIZE RANGE DRIVE

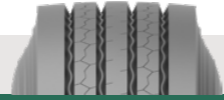


SIZE	LI/SS	PR	STANDARD RIM	TREAD DEPTH (MM)	OVERALL DIAMETER (MM)	SECTION WIDTH (MM)
10.00R20	149/146F	18	7.5	20.0	1065	278
11.00R20	152/149F	18	8.0	20.0	1096	293
12.00R20	156/153F	20	8.5	21.0	1136	315
12.00R24	162/160K	22	8.5	23.0	1238	315
12.00R24	164/161F	24	8.5	23.0	1238	315
11R22.5	148/145J	18	8.25	19.5	1065	279
12R22.5	152/149F	18	9.00	19.5	1096	300
13R22.5	156/151F	20	9.75	19.0	1136	320
295/80R22.5	152/149J	18	9.00	20.0	1050	298
315/80R22.5	157/154J	20	9.00	19.0	1082	312



MADE IN CHINA TRANS MASTER FAMILY

TRANS MASTER ESL220



SIZE	LI/SS	PR	STANDARD RIM	TREAD DEPTH (MM)	OVERALL DIAMETER (MM)	SECTION WIDTH (MM)
7.50R15LT	135/133J	16	6.00G	13.0	780	215
7.00R16LT	118/114L	14	5.50F	10.0	775	200
7.50R16LT	123/119L	14	6.00G	12.0	805	215
7.50R16LT	122/118L	16	6.00G	12.0	805	215
10.00R20	149/146K	18	7.5	16.0	1054	278
11.00R20	150/147K	16	8.0	15.0	1085	293
11.00R20	152/149K	18	8.0	15.0	1085	293
12.00R20	156/153K	20	8.5	16.0	1125	315
11R22.5	148/145M	18	8.25	14.2	1054	279
12R22.5	152/149L	18	9.00	14.5	1085	300
275/70R22.5	148/145L	16	8.25	14.0	958	276
275/80R22.5	149/146M	18	8.25	14.0	1012	276
295/80R22.5	152/149M	18	9.00	13.5	1044	298
315/80R22.5	157/154K	20	9.00	14.5	1076	312
385/55R22.5	160K	20	12.25	13.0	919	386
385/65R22.5	160K	20	11.75	13.0	1072	389

TRANS MASTER EDL320



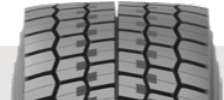
SIZE	LI/SS	PR	STANDARD RIM	TREAD DEPTH (MM)	OVERALL DIAMETER (MM)	SECTION WIDTH (MM)
11R22.5	148/145M	18	8.25	19.0	1065	279
12R22.5	152/149L	18	9.00	19.0	1096	300
295/80R22.5	152/149L	18	9.00	19.0	1050	298
315/80R22.5	157/154K	20	9.00	19.0	1082	312

TRANS MASTER GSL290



SIZE	LI/SS	PR	STANDARD RIM	TREAD DEPTH (MM)	OVERALL DIAMETER (MM)	SECTION WIDTH (MM)
315/70R22.5	156/150L	20	9.00	15.0	1014	312
315/80R22.5	160/157K	22	9.00	16.0	1076	312
385/65R22.5	164K	24	11.75	15.0	1072	389

TRANS MASTER GDL390



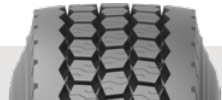
SIZE	LI/SS	PR	STANDARD RIM	TREAD DEPTH (MM)	OVERALL DIAMETER (MM)	SECTION WIDTH (MM)
315/70R22.5	154/150L	20	9.00	20.0	1020	312
315/80R22.5	160/157K	22	9.00	22.5	1082	312

TRANS MASTER ESL200



SIZE	LI/SS	PR	STANDARD RIM	TREAD DEPTH (MM)	OVERALL DIAMETER (MM)	SECTION WIDTH (MM)
11R22.5	149/146M	18	8.25	13.0	1054	279
11R24.5	152/149M	18	8.25	14.2	1104	279

TRANS MASTER EDL300



SIZE	LI/SS	PR	STANDARD RIM	TREAD DEPTH (MM)	OVERALL DIAMETER (MM)	SECTION WIDTH (MM)
11R22.5	149/146L	18	8.25	20.6	1065	279
11R24.5	152/149L	18	8.25	20.6	1116	279

TRANS MASTER GSR210



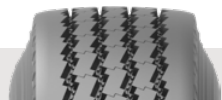
SIZE	LI/SS	PR	STANDARD RIM	TREAD DEPTH (MM)	OVERALL DIAMETER (MM)	SECTION WIDTH (MM)
205/85R16LT	117/115L	14	5 1/2J	8.5	754	203
225/80R17.5	132/129L	18	6.75	13.0	805	226
9.5R17.5	143/141J	18	6.75	13.0	842	240
215/75R17.5	135/133M	18	6.00	12.5	767	211
235/75R17.5	143/141M	18	6.75	13.3	797	233
245/70R19.5	141/140J	18	7.5	12.5	839	248
265/70R19.5	143/141J	18	7.5	12.5	867	262
285/70R19.5	150/148J	18	8.25	13.0	895	283
305/70R19.5	148/145M	20	9.00	14.0	923	305

TRANS MASTER GDR310



SIZE	LI/SS	PR	STANDARD RIM	TREAD DEPTH (MM)	OVERALL DIAMETER (MM)	SECTION WIDTH (MM)
215/75R17.5	135/133M	18	6.00	14.5	767	211
235/75R17.5	143/141M	18	6.75	15.4	797	233
265/70R19.5	143/141J	18	7.5	15.5	867	262
285/70R19.5	150/148J	18	8.25	16.0	895	283
305/70R19.5	148/145M	20	9.00	16.0	923	305

TRANS MASTER EAR230



SIZE	LI/SS	PR	STANDARD RIM	TREAD DEPTH (MM)	OVERALL DIAMETER (MM)	SECTION WIDTH (MM)
11R22.5	148/145M	18	8.25	13.0	1054	279

TRANS MASTER EDR330



SIZE	LI/SS	PR	STANDARD RIM	TREAD DEPTH (MM)	OVERALL DIAMETER (MM)	SECTION WIDTH (MM)
11R22.5	148/145M	18	8.25	19.0	1065	279

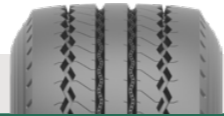
TRANS MASTER GTR280



SIZE	LI/SS	PR	STANDARD RIM	TREAD DEPTH (MM)	OVERALL DIAMETER (MM)	SECTION WIDTH (MM)
385/65R22.5	164K	24	11.75	15.5	1072	389

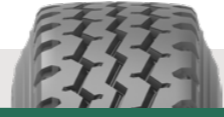
MADE IN CHINA TRANS MASTER FAMILY

TRANS MASTER ETR282



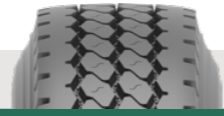
SIZE	LI/SS	PR	STANDARD RIM	TREAD DEPTH (MM)	OVERALL DIAMETER (MM)	SECTION WIDTH (MM)
385/55R22.5	160K	20	12.25	14.5	919	386
385/65R22.5	160K	20	11.75	14.5	1072	389

TRANS MASTER EAM260



SIZE	LI/SS	PR	STANDARD RIM	TREAD DEPTH (MM)	OVERALL DIAMETER (MM)	SECTION WIDTH (MM)
7.00R16LT	118/114L	14	5.50F	10.0	775	200
7.50R16LT	122/118L	16	6.00G	11.0	805	215
9.00R20	144/142K	16	7.0	15.0	259	1019
10.00R20	146/143K	16	7.5	16.0	1054	278
10.00R20	149/146K	18	7.5	16.0	1054	278
11.00R20	152/149K	18	8.0	15.0	1085	293
12.00R20	156/153K	20	8.5	17.5	1125	315
12.00R24	160/156K	20	8.5	14.0	1226	315
11R22.5	148/145M	18	8.25	15.0	1054	279
12R22.5	152/149L	18	9.00	14.5	1085	300
13R22.5	156/151K	20	9.75	16.5	1124	320
295/80R22.5	152/149M	18	9.00	15.0	1044	298
315/80R22.5	157/154K	20	9.00	15.5	1076	312

TRANS MASTER EAM262



SIZE	LI/SS	PR	STANDARD RIM	TREAD DEPTH (MM)	OVERALL DIAMETER (MM)	SECTION WIDTH (MM)
11.00R20	152/149K	18	8.0	16.0	1085	293
12.00R20	156/153K	20	8.5	16.5	1125	315
11R22.5	148/145M	18	8.25	15.0	1054	279
13R22.5	156/153K	20	9.75	15.0	1124	320
315/80R22.5	157/154K	20	9.00	15.0	1076	312

TRANS MASTER EDM360



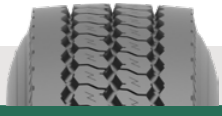
SIZE	LI/SS	PR	STANDARD RIM	TREAD DEPTH (MM)	OVERALL DIAMETER (MM)	SECTION WIDTH (MM)
11R22.5	148/145K	18	8.25	19.5	1065	279
12R22.5	152/149L	18	9.00	19.5	1096	300
13R22.5	156/151K	20	9.75	19.0	1136	320
295/80R22.5	152/149K	18	9.00	19.5	1050	298
315/80R22.5	157/154K	20	9.00	20.0	1082	312

TRANS MASTER EDM362



SIZE	LI/SS	PR	STANDARD RIM	TREAD DEPTH (MM)	OVERALL DIAMETER (MM)	SECTION WIDTH (MM)
11R22.5	148/145K	18	8.25	23.0	1065	279

TRANS MASTER EAM270



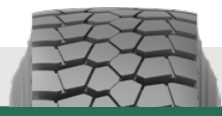
SIZE	LI/SS	PR	STANDARD RIM	TREAD DEPTH (MM)	OVERALL DIAMETER (MM)	SECTION WIDTH (MM)
12.00R24	160/156K	20	8.5	15.0	1226	315

TRANS MASTER EAM272



SIZE	LI/SS	PR	STANDARD RIM	TREAD DEPTH (MM)	OVERALL DIAMETER (MM)	SECTION WIDTH (MM)
12.00R24	160/156K	20	8.5	15.0	1226	315
325/95R24	162/160K	22	9.00	15.0	1228	325

TRANS MASTER EDM372



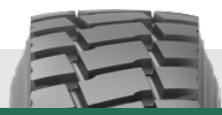
SIZE	LI/SS	PR	STANDARD RIM	TREAD DEPTH (MM)	OVERALL DIAMETER (MM)	SECTION WIDTH (MM)
225/80R17.5	132/129L	18	6.75	15.8	805	226
7.00R16LT	118/114L	14	5.50F	14.0	785	200
7.50R16LT	122/118L	16	6.00G	15.5	815	215
9.00R20	144/142K	16	7.0	15.0	259	1019
10.00R20	149/146K	18	7.5	18.0	1065	278
11.00R20	152/149K	18	8.0	16.0	1085	293
12.00R20	156/153K	20	8.5	19.5	1136	315
12.00R24	162/160K	22	8.5	19.0	1238	315
325/95R24	162/160K	22	9.00	19.0	1228	325

TRANS MASTER GTM380



SIZE	LI/SS	PR	STANDARD RIM	TREAD DEPTH (MM)	OVERALL DIAMETER (MM)	SECTION WIDTH (MM)
385/65R22.5	164K	24	11.75	18.0	1072	389

TRANS MASTER EDM370



SIZE	LI/SS	PR	STANDARD RIM	TREAD DEPTH (MM)	OVERALL DIAMETER (MM)	SECTION WIDTH (MM)
10.00R20	149/146F	18	7.5	20.0	1065	278
11.00R20	152/149F	18	8.0	20.0	1096	293
12.00R20	156/153F	20	8.5	21.0	1136	315
12.00R24	162/160K	22	8.5	23.0	1238	315
12.00R24	164/161F	24	8.5	23.0	1238	315
11R22.5	148/145J	18	8.25	19.5	1065	279
12R22.5	152/149F	18	9.00	19.5	1096	300
13R22.5	156/151F	20	9.75	19.0	1136	320
295/80R22.5	152/149J	18	9.00	20.0	1050	298
315/80R22.5	157/154J	20	9.00	19.0	1082	312

MADE IN THAILAND TERRA MASTER FAMILY

ALL ROUTES+



TERRA MASTER
GSA10



TERRA MASTER
GDA20

LONG HUAL



TERRA MASTER
GSL80



TERRA MASTER
GDL90



TERRA MASTER
GTL30

REGIONAL



TERRA MASTER
GAR60



TERRA MASTER
GDR70



TERRA MASTER
GTRS0

MIX SERVICE



TERRA MASTER
GAM66



TERRA MASTER
GDM77



TERRA MASTER
GAMSS

PATTERN	SIZE	LI/SS	PR	APPLICATION	AXLE	TREAD DEPTH (MM)
TERRA MASTER GSA10	295/80R22.5	154/149M	18	ALL ROUTES	ST/TR	14
	315/70R22.5	156/150L	20	ALL ROUTES	ST/TR	15
	315/80R22.5	156/153L(154/151M)	20	ALL ROUTES	ST/TR	16
	385/55R22.5	160K(158L)	20	ALL ROUTES	ST/TR	15
	385/65R22.5	160K(158L)	20	ALL ROUTES	ST/TR	15
	385/65R22.5	164K	24	ALL ROUTES	ST/TR	15
TERRA MASTER GDA20	295/80R22.5	152/149M	18	ALL ROUTES	DR	19
	315/70R22.5	154/150L(152/148M)	20	ALL ROUTES	DR	19
	315/80R22.5	156/153L(154/151M)	20	ALL ROUTES	DR	21
TERRA MASTER GSL80	315/60R22.5	154/150L(152/148M)	20	LONG HAUL	ST	11
	315/70R22.5	156/150L	20	LONG HAUL	ST	12
	385/55R22.5	160K(158L)	20	LONG HAUL	ST	15
TERRA MASTER GDL90	295/60R22.5	150/147K(149/146L)	18	LONG HAUL	DR	13.5
	315/60R22.5	154/150K(152/148L)	20	LONG HAUL	DR	14
	315/70R22.5	154/150L	20	LONG HAUL	DR	13.5
TERRA MASTER GTL30	385/55R22.5	160K(158L)	20	LONG HAUL	TR	15
	385/65R22.5	160K(158L)	20	LONG HAUL	TR	15
	385/65R22.5	164K	24	LONG HAUL	TR	15
	435/50R19.5	160J(156K)	20	LONG HAUL	TR	12
	445/45R19.5	160J	20	LONG HAUL	TR	12
TERRA MASTER GAR60	205/75R17.5	124/122M (126/124G)	14	REGIONAL	ST/TR	12
	215/75R17.5	128/126M	14	REGIONAL	ST/TR	13
	215/75R17.5	135/133J	16	REGIONAL	ST/TR	13
	225/75R17.5	129/127M	14	REGIONAL	ST/TR	13
	235/75R17.5	132/130M	14	REGIONAL	ST/TR	14
	235/75R17.5	143/141J	16	REGIONAL	ST/TR	14
	245/70R19.5	136/134M	16	REGIONAL	ST/TR	13
	245/70R19.5	143/141J	18	REGIONAL	ST/TR	13
	245/70R17.5	136/134M	16	REGIONAL	ST/TR	13
	245/70R17.5	141/140J	18	REGIONAL	ST/TR	13
	265/70R19.5	140/138M	16	REGIONAL	ST/TR	13
	265/70R19.5	143/141J	18	REGIONAL	ST/TR	13
	285/70R19.5	146/144M	16	REGIONAL	ST/TR	13
	285/70R19.5	150/148J	18	REGIONAL	ST/TR	13
TERRA MASTER GDR70	205/75R17.5	124/122M	14	REGIONAL	DR	15
	215/75R17.5	128/126M	14	REGIONAL	DR	15
	225/75R17.5	129/127M	14	REGIONAL	DR	16
	235/75R17.5	132/130M	14	REGIONAL	DR	16
	245/70R17.5	136/134M	16	REGIONAL	DR	15
	245/70R19.5	136/134M	16	REGIONAL	DR	15
	265/70R19.5	140/138M	16	REGIONAL	DR	16
	285/70R19.5	146/144M	16	REGIONAL	DR	16
TERRA MASTER GTRS0	385/65R22.5	160K(158L)	20	REGIONAL	TR	15
	385/65R22.5	164K	24	REGIONAL	TR	15
	425/65R22.5	165K	20	REGIONAL	TR	16
	445/65R22.5	169K	20	REGIONAL	TR	16
TERRA MASTER GAM66	13R22.5	156/151K	20	MIXWORK	ALL	16.5
	315/80R22.5	156/153K	20	MIXWORK	ALL	17.5
TERRA MASTER GDM77	13R22.5	156/151K	20	MIXWORK	DR	23
	315/80R22.5	156/153K	20	MIXWORK	DR	23
TERRA MASTER GAMSS	385/65R22.5	160K(158L)	20	MIXWORK	ALL	18
	385/65R22.5	164K	24	MIXWORK	ALL	18
	425/65R22.5	165K	20	MIXWORK	ALL	18
	445/65R22.5	169K	20	MIXWORK	ALL	18



 **WINDFORCE**

QINGDAO LANDSPIDER TIRE CORP.,LTD

WWW.LANDSPIDERTIRE.COM