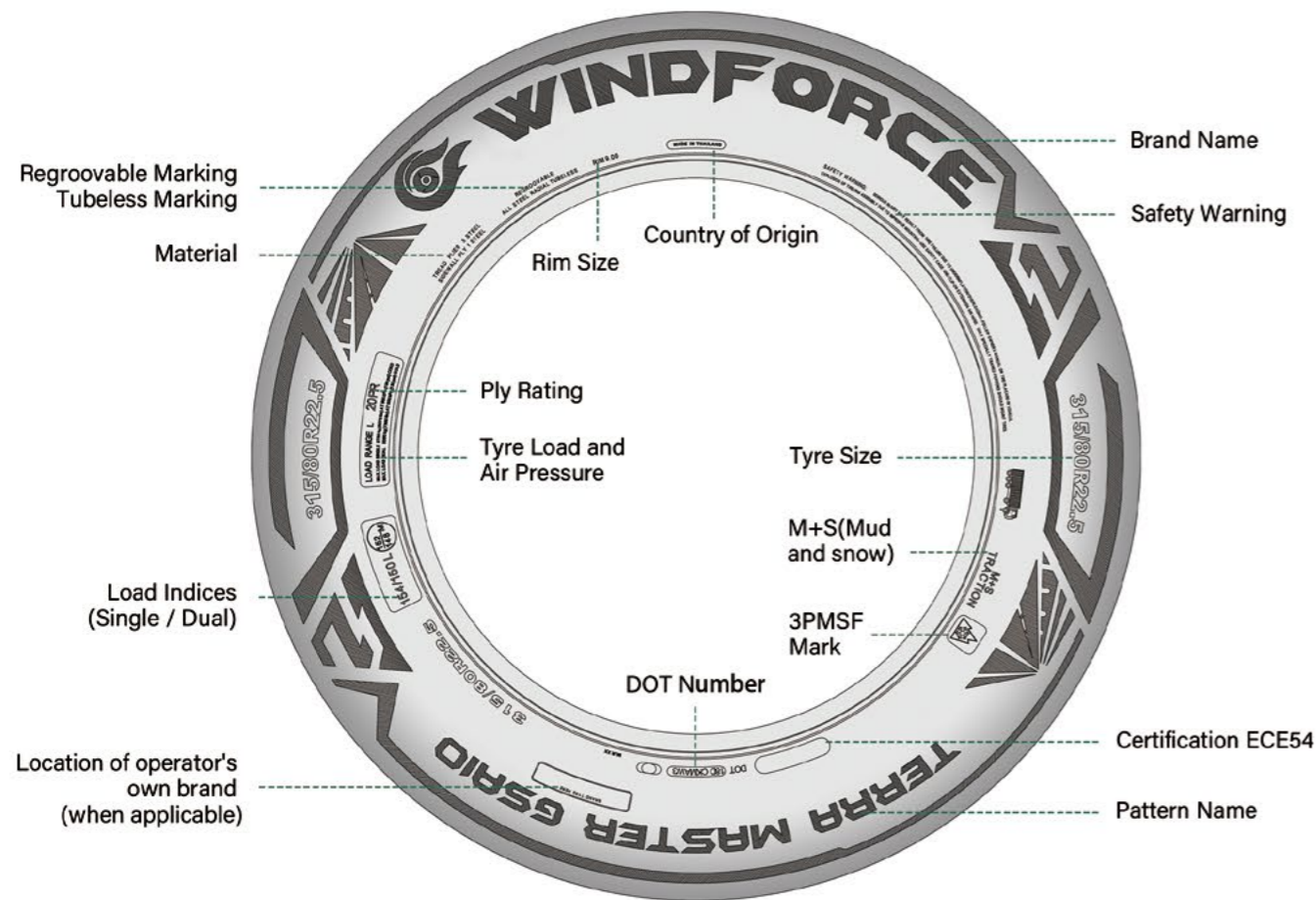


TRUCK AND BUS TYRES UPGRADING
PRODUCT CATALOGUE • 2026



SIDEWALL DIAGRAM



WINDFORCE SINCE 2012

WINDFORCE provides safety and value for the global customers, is constantly striving to create the best solutions for each application.

WINDFORCE provides a wide variety of PCR/TBR to customers, based on the demand from local market.

WINDFORCE persists on green tires to protect the environment in a concept of low carbon development and lowers the rolling resistance of tires .

WINDFORCE supplied by global TOP 9 manufacturer, has perfect quality supervision system, after-sales system and quality certification system to guarantee the product quality and improve the customer satisfaction.

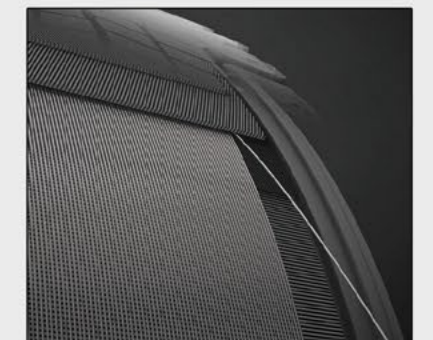
TYRE CONSTRUCTION



4-LAYER STEEL BELTS STRUCTURE TECHNOLOGY (FLST)
SIDEWALL: 1 STEEL LAYER
TREAD: 5 STEEL LAYER



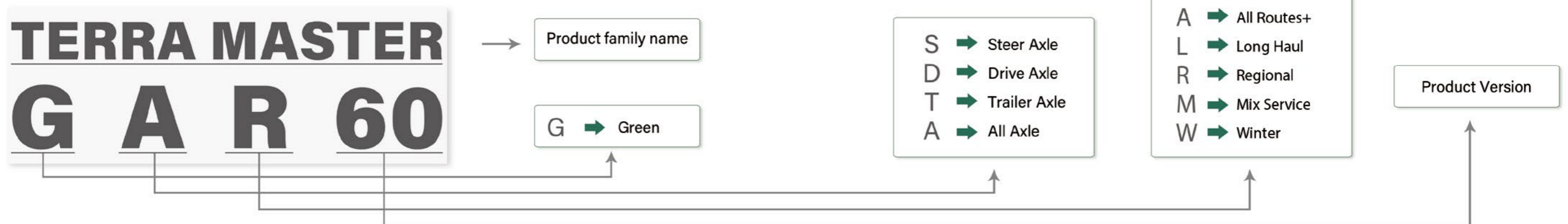
ZERO DEGREE STEEL BELTS STRUCTURE TECHNOLOGY (ZDST)
SIDEWALL: 1 STEEL LAYER
TREAD: 4 STEEL LAYER



JOINTLESS STEEL WIRE WRAPPING STRUCTURE TECHNOLOGY (JWWT)
Optimizes the shape of the contact patch for longer tread life and strengthens the crown against shocks and impacts, especially for widebase or super single loading sizes.

FLST & ZDST are two leading technology for TBR engineering nowadays. WINDFORCE, according to service conditions from local market, applies the better one to improve the satisfaction of customers.

HOW TO READ THE PROFILE NAME





APPLICATIONS

ALL ROUTES+		Hybrid concept of long haul and regional application. Excellent fuel efficiency with maximum mileage.
LONG HUAL		Long-range travel with consistent speed and less braking or accelerating. Well paved road surface with fewer curves.
REGIONAL		Journeys with repeated braking, acceleration, and turning. Well-paved road with curves and occasionally rough conditions.
MIX SERVICE		Both on and off road with aggressive, uneven or muddy road conditions. Heavy loads at medium to slow speeds and frequent stopping.
WINTER		Designed for winter use only. Extraordinary traction on snow and ice road surface.

CONTENTS

ALL ROUTES+



LONG HUAL



REGIONAL



MIX SERVICE



WINTER SERIES



THE ALL ROUTES+ SERIES



- Hybrid concept of long haul and regional application
- Excellent fuel efficiency with maximum mileage
- Improved road grip prepare for various road surface



**TERRA MASTER
GSA10**

**TERRA MASTER
GDA20**

 **Multi-Purpose Performance compound**
Nano-silica and high-quality natural rubber tread compounds ensure the tyre's durability on long-haul and regional road conditions.

 **Shoulder stiffness optimized technology**
Shoulder stiffness hold technology can optimize the tyre footprint, improve contact pressure distribution, less uneven wear.

 **Stable belt construct design**
The stable structure of the belt reduces the shear deformation, enhanced tyre life and durability.

Highway

Country Road

City

Construction Site



TERRA MASTER GSA10



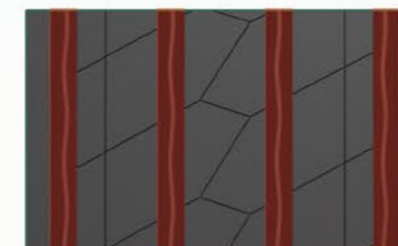
The latest generation of high-performance steer position tyre for national and regional operations.



TERRA MASTER GSA10

TECHNICAL FEATURE

Four curved tread grooves ensure good drainage performance.



Special designed tread pitches ensure low external noise.



Multi kerf provides outstanding traction on wet and snow road surface.



SIZE RANGE Steer



SIZE	PR	LI/SS	TREAD DEPTH (MM)	M+S				dB	
295/80R22.5	18	154/149M	14	✓	✓	C	C	73	B
315/70R22.5	20	156/150L(152/148M)	15	✓	✓	C	C	73	B
315/80R22.5	20	156/153L(154/151M)	16	✓	✓	C	C	73	B
385/55R22.5	20	160K(158L)	15	✓	✓	B	B	73	B
385/65R22.5	20	160K(158L)	15	✓	✓	B	C	73	B
	24	164K	15	✓	✓	B	C	73	B



TERRA MASTER GDAZO



The latest generation of high-performance drive position tyre for national and regional operations.

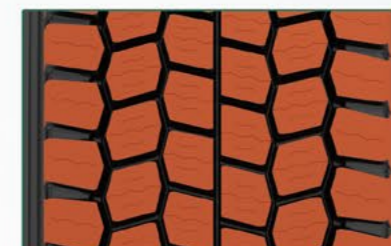
TERRA MASTER GDAZO

TECHNICAL FEATURE

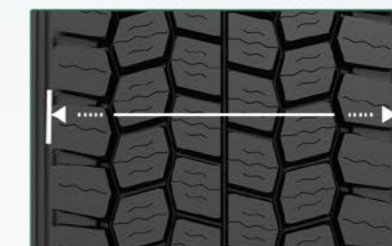
Deep tread depth improves traction and grip on the road and extends tire life.



Optimized deep multi-blocks pattern design provides ultra driving force.



Widened tread width enhances driving stability and provides even pressure distribution.



SIZE RANGE Drive



SIZE	PR	LI/SS	TREAD DEPTH (MM)	M+S	❄️	🌧️	🌧️	dB	🔊
295/80R22.5	18	152/149M	19	✓	✓	D	C	75	B
315/70R22.5	20	154/150L(152/148M)	19	✓	✓	D	C	75	B
315/80R22.5	20	156/153L(154/151M)	21	✓	✓	D	C	75	B

THE LONG HAUL SERIES



- Long distance journey with constant speed and less braking and accelerating.
- Less fuel consumption and comfortable ride.
- High mileage performance.



**TERRA MASTER
GSL80**

**TERRA MASTER
GDL90**

**TERRA MASTER
GTL30**



Special low heat compound design

Special compound design, low heat generation during tire running, low CO₂, energy saving and environmental protection.



Optimized pattern design

The optimized design of pattern, high land-sea ratio pattern design effectively reduce the rolling resistance of tires, more fuel efficient.



Advanced tire design theory

Advanced tire design concepts, make the tire longevity, green and safety.

Highway

Country Road

City

Construction Site



TERRA MASTER GSL80



The latest generation of high-performance steer tyre for long haul application

TERRA MASTER GSL80

TECHNICAL FEATURE

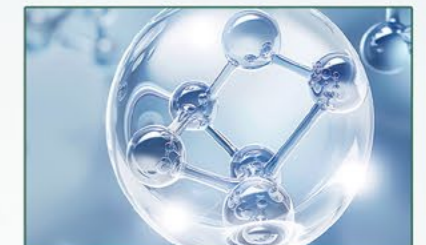
Advanced 3 grooves tread provides even wear and remarkable handling.



Wider tread and higher saturation, provides longer mileage and more driving stability.



Special tread compound guarantees less fuel consumption with lower rolling resistance.



SIZE RANGE Steer



SIZE	PR	LI/SS	TREAD DEPTH (MM)	M+S				dB	
315/60R22.5	20	154/150L(152/148M)	11	✓	✓	B	C	74	B
315/70R22.5	20	156/150L(152/148M)	12	✓	✓	B	C	74	B
385/55R22.5	20	160K(158L)	15	✓	✓	B	C	74	B



TERRA MASTER GDL90



The latest generation of high-performance drive tyre for long haul application.

TERRA MASTER GDL90

TECHNICAL FEATURE

Wider tread and higher saturation, provides longer mileage and more driving stability.



As hidden grooves appear at the end of wear, it keeps wet grip and traction performance.



Special tread compound guarantees less fuel consumption with lower rolling resistance.



SIZE RANGE Drive



SIZE	PR	LI/SS	TREAD DEPTH (MM)	M+S				dB	
295/60R22.5	18	150/147K(149/146L)	13.5	✓	✓	B	C	74	B
315/60R22.5	20	154/150K(152/148L)	14	✓	✓	B	B	74	B
315/70R22.5	20	154/150L(152/148M)	13.5	✓	✓	B	C	74	B



TERRA MASTER GTL30



M+S

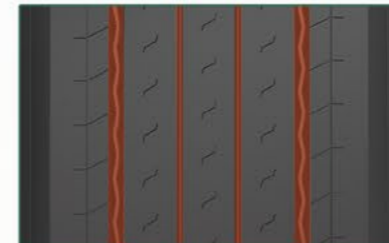
Wide base trailer tyre specially design for trailer service.



TERRA MASTER GTL30

TECHNICAL FEATURE

The pattern with two main channel grooves and wider ribs maximizes.



The robust shoulder ribs provide driving stability and prevent uneven wear.



Low rolling resistance compound reduces the loss of energy and results in.



SIZE RANGE Trailer



	SIZE	PR	LI/SS	TREAD DEPTH (MM)	M+S					dB	
tread A	385/55R22.5	20	160K(158L)	15	✓	✓	B	C	74	B	
	385/65R22.5	20	160K(158L)	15	✓	✓	B	C	74	B	
		24	164K	15	✓	✓	B	C	74	B	
tread B	435/50R19.5	20	160J(156K)	12	✓	✓	B	C	74	B	
	445/45R19.5	20	160J	12	✓	✓	B	B	74	B	

THE REGIONAL SERIES



- Shorter journey with frequent braking, accelerating and turning
- Improved road grip with maximum mileage
- Exceptional tough type



**TERRA MASTER
GAR60**

**TERRA MASTER
GDR70**

**TERRA MASTER
GTR50**

Highway

Country Road

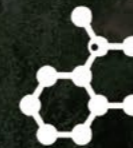
City

Construction Site



Shoulder Rigidity Reinforced Design

By optimizing the overall material distribution of the tyre, the rigidity and handling stability of the tyre have been greatly improved.



Ultra-High Tensile Cord

The UHT carcass cords provide better anti-deformation performance for the tyre, while at the same time better dispersing the pressure and significantly increasing the safety performance of the tyre.



Upgraded security features

Excellent stability and durability, even in challenging weather conditions.



TERRA MASTER GAR60



New steer tyre engineered with innovative latest technology for local and regional operations with rims of 17.5" and 19.5".

TERRA MASTER GAR60

TECHNICAL FEATURE

Computer designed 5-Rib tread provides precise handling.



Tread sipes alongside tread grooves offer outstanding wet operation and even tread contact on road surface.



The high, rigid belt structure enhances driving stability.



SIZE RANGE All Axle



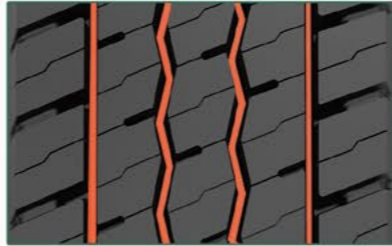
SIZE	PR	LI/SS	TREAD DEPTH (MM)	M+S					
205/75R17.5	14	124/122M (126/124G)	12	✓	✓	D	C	72	B
215/75R17.5	14	128/126M	13	✓	✓	D	C	72	B
	16	135/133J	13	✓	✓	D	C	72	B
225/75R17.5	14	129/127M	13	✓	✓	D	C	72	B
	14	132/130M	14	✓	✓	D	C	72	B
235/75R17.5	16	143/141J	14	✓	✓	D	C	72	B
	16	136/134M	13	✓	✓	D	C	72	B
245/70R17.5	18	143/141J	13	✓	✓	D	C	72	B
	16	136/134M	13	✓	✓	D	C	72	B
245/70R19.5	18	141/140J	13	✓	✓	D	C	72	B
	16	140/138M	13	✓	✓	D	C	72	B
265/70R19.5	18	143/141J	13	✓	✓	D	C	72	B
	16	146/144M	13	✓	✓	D	C	72	B
285/70R19.5	18	150/148J	13	✓	✓	D	C	72	B



TERRA MASTER GDR70

TECHNICAL FEATURE

Wide tread with grooves enables high mileage and excellent driving performance in variable conditions.



Special tread pattern design for low rolling resistance and excellent traction performance across multi applications.



Excellent footprint design promises even wear and remarkable tyre life.



TERRA MASTER GDR70

New drive tyre designed for local and regional application with rims of 17.5" and 19.5".

SIZE RANGE Drive



SIZE	PR	LI/SS	TREAD DEPTH (MM)	M+S					dB	
205/75R17.5	14	124/122M	15	✓	✓	D	C	73	A	
215/75R17.5	14	128/126M	15	✓	✓	D	C	73	A	
225/75R17.5	14	129/127M	16	✓	✓	D	C	73	A	
235/75R17.5	14	132/130M	16	✓	✓	D	C	73	A	
245/70R17.5	16	136/134M	15	✓	✓	D	C	73	A	
245/70R19.5	16	136/134M	15	✓	✓	D	C	73	A	
265/70R19.5	16	140/138M	16	✓	✓	D	C	73	A	
285/70R19.5	16	146/144M	16	✓	✓	D	C	73	A	



TERRA MASTER GTR50

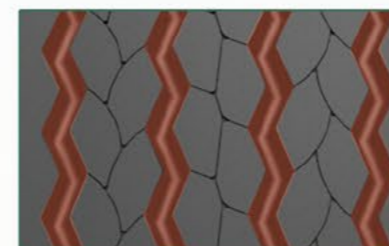


Good damage protection and even wear profile feature outstanding performance in all conditions.

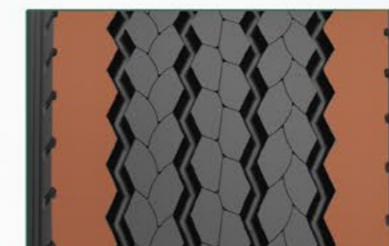
TERRA MASTER GTR50

TECHNICAL FEATURE

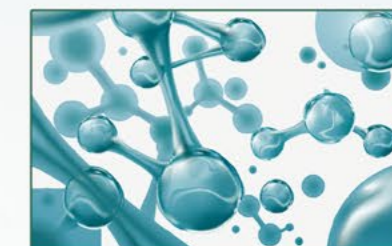
Four grooves with zigzag designed provide excellent stone ejection and groove crack prevention.



Wide and solid shoulder design guarantee long mileage.



Special tread compound guarantees less fuel consumption with lower rolling resistance.



SIZE RANGE Trailer



SIZE	PR	LI/SS	TREAD DEPTH (MM)	M+S				dB	
385/65R22.5	20	160K(158L)	15	✓	✓	C	C	72	B
385/65R22.5	24	164K	15	✓	✓	C	C	72	B
425/65R22.5	20	165K	16	✓	✓	C	C	72	B
445/65R22.5	20	169K	16	✓	✓	C	C	72	B

THE MIX SERVICE SERIES



- Used both on and off road
- Heavy loads and outstanding durability
- Special protection against the damage caused by the road condition



**TERRA MASTER
GAM66**

**TERRA MASTER
GDM77**

**TERRA MASTER
GAMSS**



Reinforced bead structure design

The reinforced structure of the tire bead is used to meet the load demand in the ON/OFF application, and the product life is longer.



Special cutting resistance compound design

Special cutting resistance compound helps resist chipping, chunking and tearing for a better mileage.



High tensile cord design

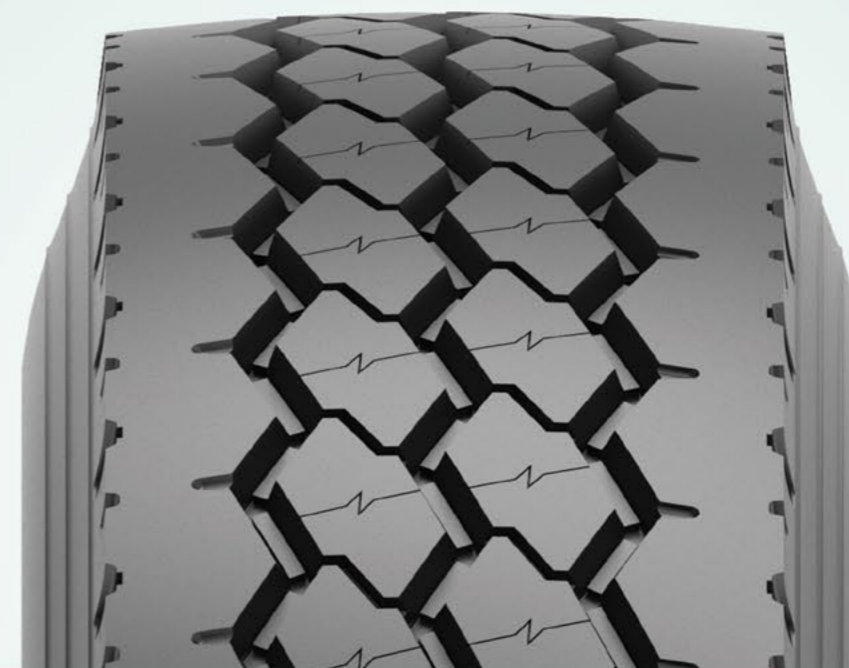
High tensile cord is used in tyres to ensure their load capacity and safety in harsh operating environments.

Highway

Country Road

City

Construction Site



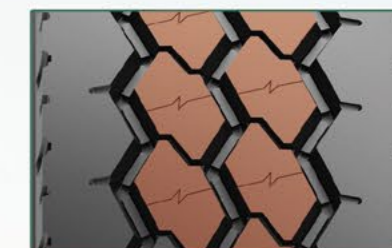
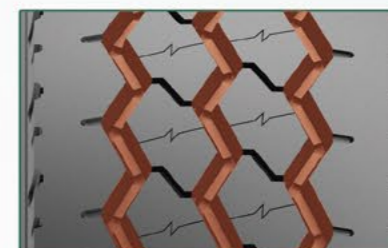
TERRA MASTER GAM66

TECHNICAL FEATURE

Wider tread width and solid shoulder offer improved tread stiffness, leading to an increased mileage .

Three zigzag grooves and multi-angular sipes improve traction and braking performance.

Polygonal block pattern provides outstanding traction and braking performance.



TERRA MASTER GAM66



M+S

New generation all position tyre with latest technology for on & off operation.

SIZE RANGE All Axle



SIZE	PR	LI/SS	TREAD DEPTH (MM)	M+S				dB	
13R22.5	20	156/151K	16.5	✓	✓	D	C	73	B
315/80R22.5	20	156/153K	17.5	✓	✓	D	D	73	B



TERRA MASTER GDM77



Premium tyre designed for drive position applicable for rough road surface.

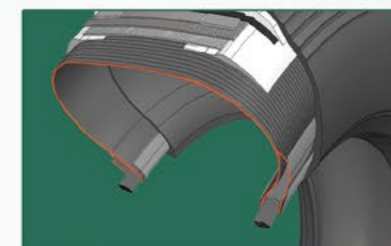
TERRA MASTER GDM77

TECHNICAL FEATURE

Aggressive direction tread with robust tread blocks providing extra traction for on/off road condition.



The reinforced bead construction provides excellent structural durability to extend tyre life.



Special rubber compound ensuring more resistance to cuts and tearing.



SIZE RANGE Drive



SIZE	PR	LI/SS	TREAD DEPTH (MM)	M+S					dB	
13R22.5	20	156/151K	23	✓	✓	D	C	74	B	
315/80R22.5	20	156/153K	23	✓	✓	D	D	74	B	



TERRA MASTER GAMSS

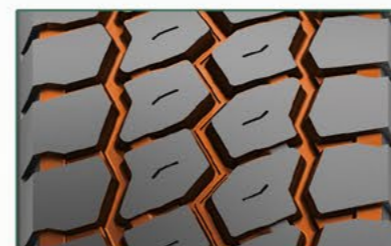


New strong casing multi-service tyre for on & off operation.

TERRA MASTER GAMSS

TECHNICAL FEATURE

Aggressive multi-service, all position tread pattern promises excellent traction in ON/OFF road service.



Outstanding self-cleaning tread design ensures long-life service in ON/OFF road conditions.



Robust tread blocks and rugged casing allows for heavy loads and resist casing penetration and damage.



SIZE RANGE All Axle



SIZE	PR	LI/SS	TREAD DEPTH (MM)	M+S				dB	
385/65R22.5	20	160K(158L)	18	✓	✓	C	C	74	B
385/65R22.5	24	164K	18	✓	✓	C	C	74	B
425/65R22.5	20	165K	18	✓	✓	C	C	74	B
445/65R22.5	20	169K	18	✓	✓	C	C	74	B

WINTER SERIES



- Designed for winter use only
- Extraordinary traction on snow and ice road surface



**TERRA MASTER
GSW88**

**TERRA MASTER
GDW99**

Highway

Country Road

City

Construction Site



3D

Advanced Siping Technology

Effective 3D siping technology improves winter grip in both acceleration and braking on packed snow and ice.



Multi-Purpose Performance Formula

Nano-silica and high-quality rubber tread compounds ensure the tyre's durability even in extreme weather conditions



Safety and Beyond

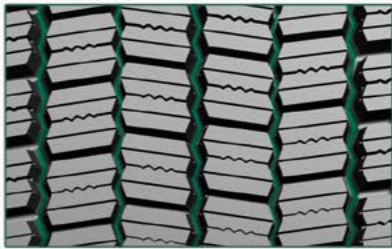
M+S (Mud + Snow) marked tyres and Three-Peak Mountain Snowflake (3PMS-F) tyres deliver winter performance that is legally certified



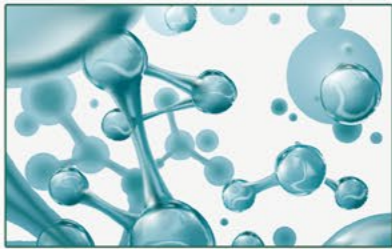
TERRA MASTER GSW88

TECHNICAL FEATURE

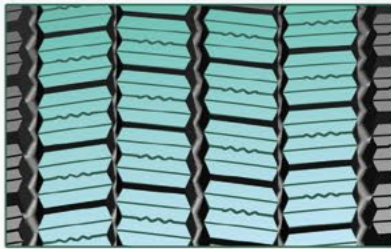
Wide and deep circumferential grooves enhances removal of snow and ice.



Specific tread compound keep rubber softness in low temperature with good performance.



Wide tread with advanced block and sipe design provides extra traction for Snow and ice road conditions.



SIZE RANGE Snow Proof/Steer Axle



SIZE	PR	LI/SS	TREAD DEPTH (MM)	M+S	SNOW PROOF	TRAFFIC LIGHT	WET GRIP	dB	NOISE
295/80R22.5	18	154/149L	18	✓	✓	E	C	73	B
315/80R22.5	18	154/151M (156/153L)	18	✓	✓	E	C	73	B
315/70R22.5	20	156/150L (152/148M)	17	✓	✓	E	C	73	B
385/55R22.5	20	160K	15	✓	✓	D	B	74	B
385/65R22.5	20	160K	16	✓	✓	D	B	74	B
	24	164K	16	✓	✓	D	B	74	B

TERRA MASTER GSW88



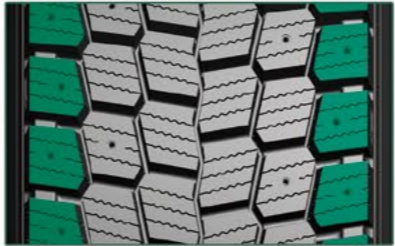
New Steer tyre with WINDFORCE's latest technology for winter application.



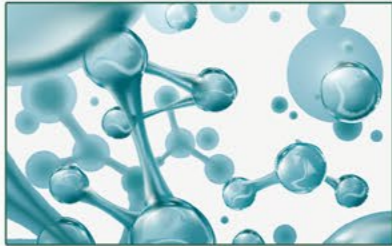
TERRA MASTER GDW99

TECHNICAL FEATURE

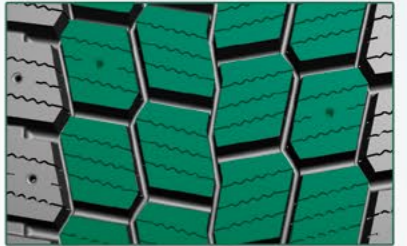
Wide open shoulder deliver additional traction without compromising tread life.



Specific tread compound keep rubber softness in low temperature with good performance.



Studable tread design provides extra traction for snow and ice road conditions.



SIZE RANGE Snow Proof/Steer Axle



SIZE	PR	LI/SS	TREAD DEPTH (MM)	M+S	SNOW PROOF	RECYCLED RUBBER	LOW NOISE	dB	WET GRIP
295/80R22.5	18	154/149L	21	✓	✓	E	C	74	B
315/80R22.5	18	156/153K (154/151L)	21	✓	✓	E	C	74	B
315/70R22.5	20	154/150K (152/148L)	19	✓	✓	E	C	74	B

TERRA MASTER GDW99



Designed for excellent winter traction in extreme weather conditions on a variety of surfaces.



QINGDAO LANDSPIDER TIRE CORP.,LTD

[WWW.LANDSPIDERTIRE .COM](http://WWW.LANDSPIDERTIRE.COM)