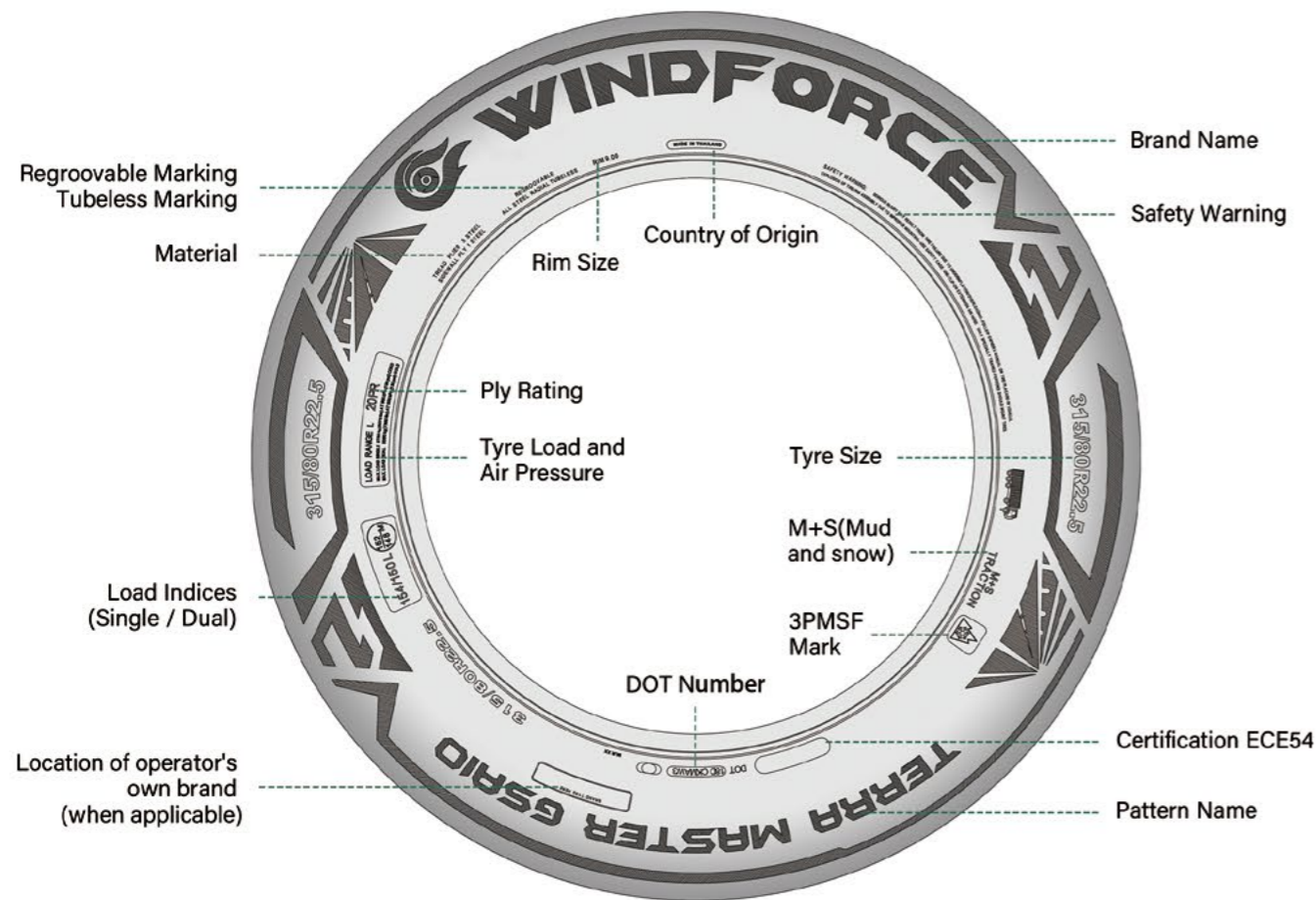


**TRUCK AND BUS TYRES** UPGRADING  
PRODUCT CATALOGUE • 2026



# SIDEWALL DIAGRAM



# WINDFORCE SINCE 2012

**WINDFORCE** provides safety and value for the global customers, is constantly striving to create the best solutions for each application.

**WINDFORCE** provides a wide variety of PCR/TBR to customers, based on the demand from local market.

**WINDFORCE** persists on green tires to protect the environment in a concept of low carbon development and lowers the rolling resistance of tires .

**WINDFORCE** supplied by global TOP 9 manufacturer, has perfect quality supervision system, after-sales system and quality certification system to guarantee the product quality and improve the customer satisfaction.

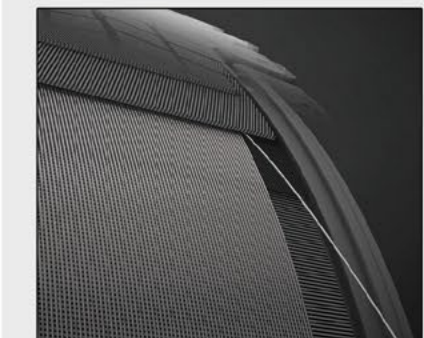
# TYRE CONSTRUCTION



**4-LAYER STEEL BELTS STRUCTURE TECHNOLOGY (FLST)**  
 SIDEWALL: 1 STEEL LAYER  
 TREAD: 5 STEEL LAYER



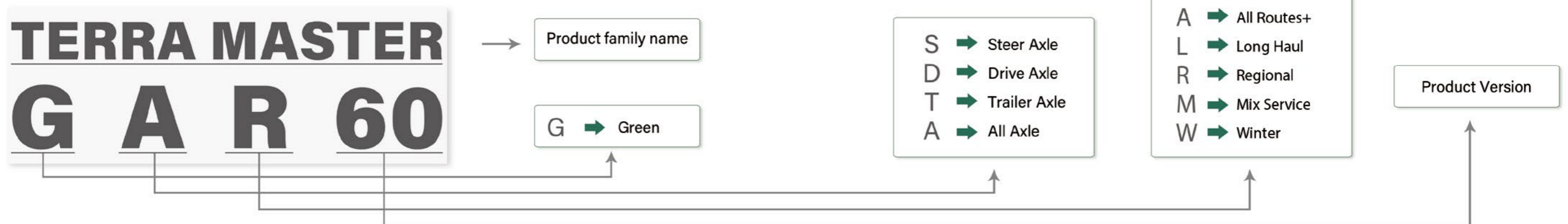
**ZERO DEGREE STEEL BELTS STRUCTURE TECHNOLOGY (ZDST)**  
 SIDEWALL: 1 STEEL LAYER  
 TREAD: 4 STEEL LAYER



**JOINTLESS STEEL WIRE WRAPPING STRUCTURE TECHNOLOGY (JWWT)**  
 Optimizes the shape of the contact patch for longer tread life and strengthens the crown against shocks and impacts, especially for widebase or super single loading sizes.

FLST & ZDST are two leading technology for TBR engineering nowadays. WINDFORCE, according to service conditions from local market, applies the better one to improve the satisfaction of customers.

# HOW TO READ THE PROFILE NAME





## APPLICATIONS

|                    |  |   |
|--------------------|--|---|
| <b>ALL ROUTES+</b> |  | Hybrid concept of long haul and regional application.<br>Excellent fuel efficiency with maximum mileage.                              |
| <b>LONG HUAL</b>   |  | Long-range travel with consistent speed and less braking or accelerating.<br>Well paved road surface with fewer curves.               |
| <b>REGIONAL</b>    |  | Journeys with repeated braking, acceleration, and turning.<br>Well-paved road with curves and occasionally rough conditions.          |
| <b>MIX SERVICE</b> |  | Both on and off road with aggressive, uneven or muddy road conditions.<br>Heavy loads at medium to slow speeds and frequent stopping. |
| <b>WINTER</b>      |  | Designed for winter use only.<br>Extraordinary traction on snow and ice road surface.   |

## CONTENTS

### ALL ROUTES+



### LONG HUAL



### REGIONAL



### MIX SERVICE



### WINTER SERIES



# THE ALL ROUTES+ SERIES



- Hybrid concept of long haul and regional application
- Excellent fuel efficiency with maximum mileage
- Improved road grip prepare for various road surface



**TERRA MASTER  
GSA10**

**TERRA MASTER  
GDA20**

Highway

Country Road

City

Construction Site



## Multi-Purpose Performance compound

Nano-silica and high-quality natural rubber tread compounds ensure the tyre's durability on long-haul and regional road conditions.



## Shoulder stiffness optimized technology

Shoulder stiffness hold technology can optimize the tyre footprint, improve contact pressure distribution, less uneven wear.



## Stable belt construct design

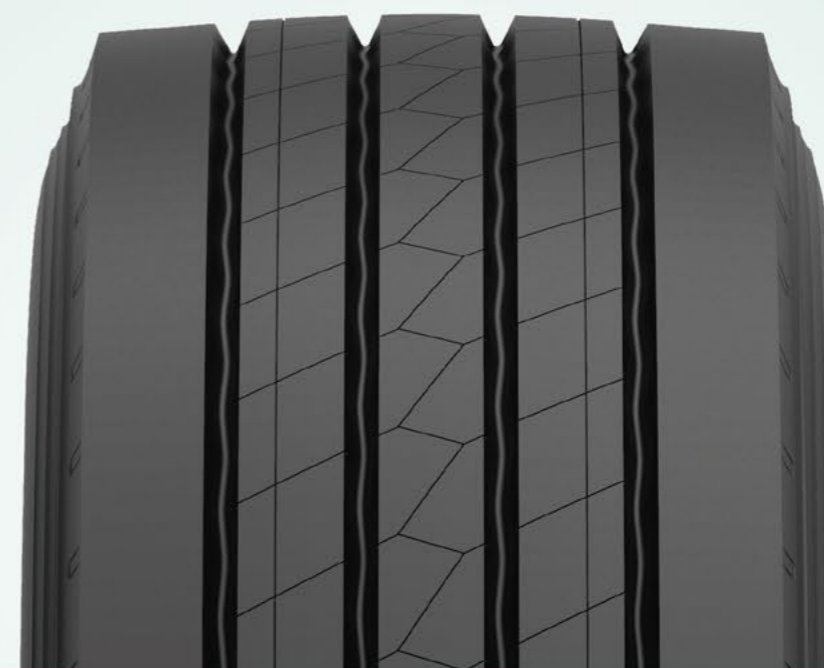
The stable structure of the belt reduces the shear deformation, enhanced tyre life and durability.



# TERRA MASTER GSA10



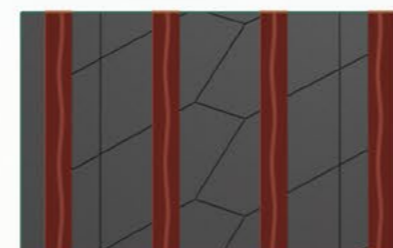
The latest generation of high-performance steer position tyre for national and regional operations.



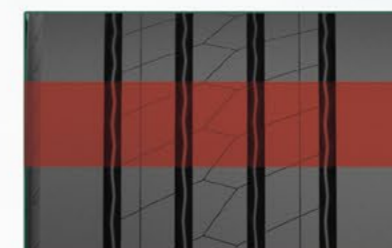
## TERRA MASTER GSA10

### TECHNICAL FEATURE

Four curved tread grooves ensure good drainage performance.



Special designed tread pitches ensure low external noise.



Multi kerf provides outstanding traction on wet and snow road surface.



### SIZE RANGE Steer



| SIZE        | PR | LI/SS              | TREAD DEPTH (MM) | M+S |   |   |   | dB |   |
|-------------|----|--------------------|------------------|-----|---|---|---|----|---|
| 295/80R22.5 | 18 | 154/149M           | 14               | ✓   | ✓ | C | C | 73 | B |
| 315/70R22.5 | 20 | 156/150L(152/148M) | 15               | ✓   | ✓ | C | C | 73 | B |
| 315/80R22.5 | 20 | 156/153L(154/151M) | 16               | ✓   | ✓ | C | C | 73 | B |
| 385/55R22.5 | 20 | 160K(158L)         | 15               | ✓   | ✓ | B | B | 73 | B |
| 385/65R22.5 | 20 | 160K(158L)         | 15               | ✓   | ✓ | B | C | 73 | B |
|             | 24 | 164K               | 15               | ✓   | ✓ | B | C | 73 | B |



# TERRA MASTER GDAZO



The latest generation of high-performance drive position tyre for national and regional operations.

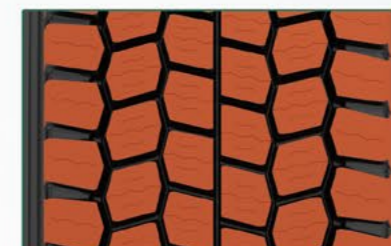
## TERRA MASTER GDAZO

### TECHNICAL FEATURE

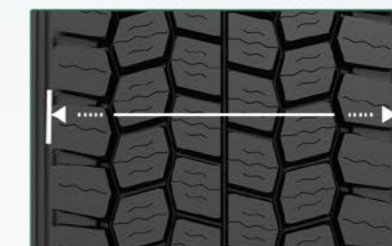
Deep tread depth improves traction and grip on the road and extends tire life.



Optimized deep multi-blocks pattern design provides ultra driving force.



Widened tread width enhances driving stability and provides even pressure distribution.



### SIZE RANGE Drive



| SIZE        | PR | LI/SS              | TREAD DEPTH (MM) | M+S |   |   |   | dB |   |
|-------------|----|--------------------|------------------|-----|---|---|---|----|---|
| 295/80R22.5 | 18 | 152/149M           | 19               | ✓   | ✓ | D | C | 75 | B |
| 315/70R22.5 | 20 | 154/150L(152/148M) | 19               | ✓   | ✓ | D | C | 75 | B |
| 315/80R22.5 | 20 | 156/153L(154/151M) | 21               | ✓   | ✓ | D | C | 75 | B |

# THE LONG HAUL SERIES



- Long distance journey with constant speed and less braking and accelerating.
- Less fuel consumption and comfortable ride.
- High mileage performance.



**TERRA MASTER  
GSL80**

**TERRA MASTER  
GDL90**

**TERRA MASTER  
GTL30**

Highway

Country Road

City

Construction Site



## Special low heat compound design

Special compound design, low heat generation during tire running, low CO<sub>2</sub>, energy saving and environmental protection.



## Optimized pattern design

The optimized design of pattern, high land-sea ratio pattern design effectively reduce the rolling resistance of tires, more fuel efficient.



## Advanced tire design theory

Advanced tire design concepts, make the tire longevity, green and safety.



# TERRA MASTER GSL80



The latest generation of high-performance steer tyre for long haul application

## TERRA MASTER GSL80

### TECHNICAL FEATURE

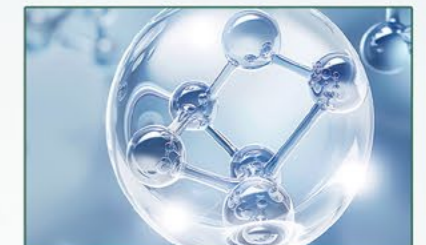
Advanced 3 grooves tread provides even wear and remarkable handling.



Wider tread and higher saturation, provides longer mileage and more driving stability.



Special tread compound guarantees less fuel consumption with lower rolling resistance.



### SIZE RANGE Steer



| SIZE        | PR | LI/SS              | TREAD DEPTH (MM) | M+S |   |   |   | dB |   |
|-------------|----|--------------------|------------------|-----|---|---|---|----|---|
| 315/60R22.5 | 20 | 154/150L(152/148M) | 11               | ✓   | ✓ | B | C | 74 | B |
| 315/70R22.5 | 20 | 156/150L(152/148M) | 12               | ✓   | ✓ | B | C | 74 | B |
| 385/55R22.5 | 20 | 160K(158L)         | 15               | ✓   | ✓ | B | C | 74 | B |



# TERRA MASTER GDL90



The latest generation of high-performance drive tyre for long haul application.

## TERRA MASTER GDL90

### TECHNICAL FEATURE

Wider tread and higher saturation, provides longer mileage and more driving stability.



As hidden grooves appear at the end of wear, it keeps wet grip and traction performance.



Special tread compound guarantees less fuel consumption with lower rolling resistance.



### SIZE RANGE Drive



| SIZE        | PR | LI/SS              | TREAD DEPTH (MM) | M+S |   |   |   | dB |   |
|-------------|----|--------------------|------------------|-----|---|---|---|----|---|
| 295/60R22.5 | 18 | 150/147K(149/146L) | 13.5             | ✓   | ✓ | B | C | 74 | B |
| 315/60R22.5 | 20 | 154/150K(152/148L) | 14               | ✓   | ✓ | B | B | 74 | B |
| 315/70R22.5 | 20 | 154/150L(152/148M) | 13.5             | ✓   | ✓ | B | C | 74 | B |



# TERRA MASTER GTL30



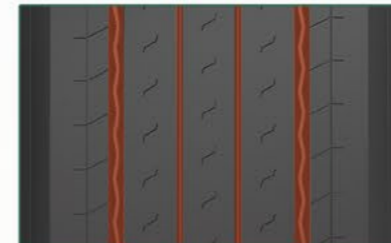
Wide base trailer tyre specially design for trailer service.



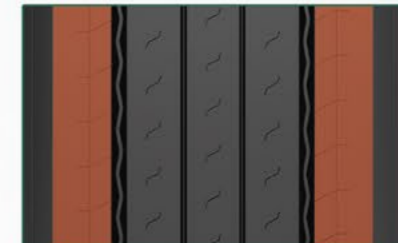
## TERRA MASTER GTL30

### TECHNICAL FEATURE

The pattern with two main channel grooves and wider ribs maximizes.



The robust shoulder ribs provide driving stability and prevent uneven wear.



Low rolling resistance compound reduces the loss of energy and results in.



### SIZE RANGE Trailer



|         | SIZE        | PR | LI/SS      | TREAD DEPTH (MM) | M+S |   |   |   | dB |   |
|---------|-------------|----|------------|------------------|-----|---|---|---|----|---|
| tread A | 385/55R22.5 | 20 | 160K(158L) | 15               | ✓   | ✓ | B | C | 74 | B |
|         | 385/65R22.5 | 20 | 160K(158L) | 15               | ✓   | ✓ | B | C | 74 | B |
|         |             | 24 | 164K       | 15               | ✓   | ✓ | B | C | 74 | B |
| tread B | 435/50R19.5 | 20 | 160J(156K) | 12               | ✓   | ✓ | B | C | 74 | B |
|         | 445/45R19.5 | 20 | 160J       | 12               | ✓   | ✓ | B | B | 74 | B |

# THE REGIONAL SERIES



- Shorter journey with frequent braking, accelerating and turning
- Improved road grip with maximum mileage
- Exceptional tough type



**TERRA MASTER  
GAR60**

**TERRA MASTER  
GDR70**

**TERRA MASTER  
GTR50**

Highway

Country Road

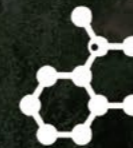
City

Construction Site



## Shoulder Rigidity Reinforced Design

By optimizing the overall material distribution of the tyre, the rigidity and handling stability of the tyre have been greatly improved.



## Ultra-High Tensile Cord

The UHT carcass cords provide better anti-deformation performance for the tyre, while at the same time better dispersing the pressure and significantly increasing the safety performance of the tyre.



## Upgraded security features

Excellent stability and durability, even in challenging weather conditions.



# TERRA MASTER GAR60



New steer tyre engineered with innovative latest technology for local and regional operations with rims of 17.5" and 19.5".

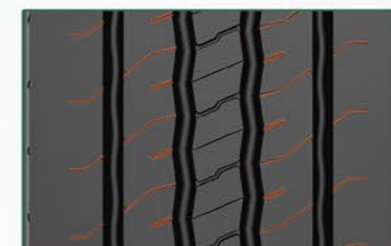
## TERRA MASTER GAR60

### TECHNICAL FEATURE

Computer designed 5-Rib tread provides precise handling.



Tread sipes alongside tread grooves offer outstanding wet operation and even tread contact on road surface.



The high, rigid belt structure enhances driving stability.



### SIZE RANGE All Axle



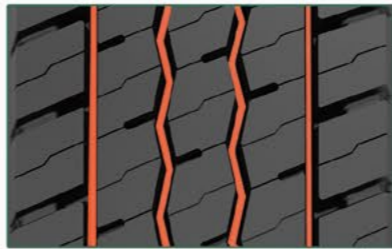
| SIZE        | PR | LI/SS               | TREAD DEPTH (MM) | M+S |   |   |   |    | dB |  |
|-------------|----|---------------------|------------------|-----|---|---|---|----|----|--|
| 205/75R17.5 | 14 | 124/122M (126/124G) | 12               | ✓   | ✓ | D | C | 72 | B  |  |
| 215/75R17.5 | 14 | 128/126M            | 13               | ✓   | ✓ | D | C | 72 | B  |  |
|             | 16 | 135/133J            | 13               | ✓   | ✓ | D | C | 72 | B  |  |
| 225/75R17.5 | 14 | 129/127M            | 13               | ✓   | ✓ | D | C | 72 | B  |  |
|             | 14 | 132/130M            | 14               | ✓   | ✓ | D | C | 72 | B  |  |
| 235/75R17.5 | 16 | 143/141J            | 14               | ✓   | ✓ | D | C | 72 | B  |  |
|             | 16 | 136/134M            | 13               | ✓   | ✓ | D | C | 72 | B  |  |
| 245/70R17.5 | 18 | 143/141J            | 13               | ✓   | ✓ | D | C | 72 | B  |  |
|             | 16 | 136/134M            | 13               | ✓   | ✓ | D | C | 72 | B  |  |
| 245/70R19.5 | 18 | 141/140J            | 13               | ✓   | ✓ | D | C | 72 | B  |  |
|             | 16 | 140/138M            | 13               | ✓   | ✓ | D | C | 72 | B  |  |
| 265/70R19.5 | 18 | 143/141J            | 13               | ✓   | ✓ | D | C | 72 | B  |  |
|             | 16 | 146/144M            | 13               | ✓   | ✓ | D | C | 72 | B  |  |
| 285/70R19.5 | 18 | 150/148J            | 13               | ✓   | ✓ | D | C | 72 | B  |  |



# TERRA MASTER GDR70

## TECHNICAL FEATURE

Wide tread with grooves enables high mileage and excellent driving performance in variable conditions.



Special tread pattern design for low rolling resistance and excellent traction performance across multi applications.



Excellent footprint design promises even wear and remarkable tyre life.



# TERRA MASTER GDR70



New drive tyre designed for local and regional application with rims of 17.5" and 19.5".

## SIZE RANGE Drive



| SIZE        | PR | LI/SS    | TREAD DEPTH (MM) | M+S |   |   |   |    | dB |  |
|-------------|----|----------|------------------|-----|---|---|---|----|----|--|
| 205/75R17.5 | 14 | 124/122M | 15               | ✓   | ✓ | D | C | 73 | A  |  |
| 215/75R17.5 | 14 | 128/126M | 15               | ✓   | ✓ | D | C | 73 | A  |  |
| 225/75R17.5 | 14 | 129/127M | 16               | ✓   | ✓ | D | C | 73 | A  |  |
| 235/75R17.5 | 14 | 132/130M | 16               | ✓   | ✓ | D | C | 73 | A  |  |
| 245/70R17.5 | 16 | 136/134M | 15               | ✓   | ✓ | D | C | 73 | A  |  |
| 245/70R19.5 | 16 | 136/134M | 15               | ✓   | ✓ | D | C | 73 | A  |  |
| 265/70R19.5 | 16 | 140/138M | 16               | ✓   | ✓ | D | C | 73 | A  |  |
| 285/70R19.5 | 16 | 146/144M | 16               | ✓   | ✓ | D | C | 73 | A  |  |



# TERRA MASTER GTR50

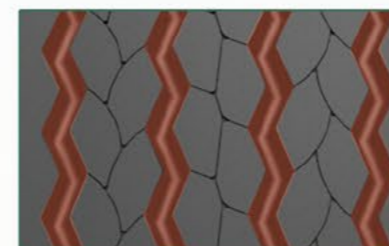


Good damage protection and even wear profile feature outstanding performance in all conditions.

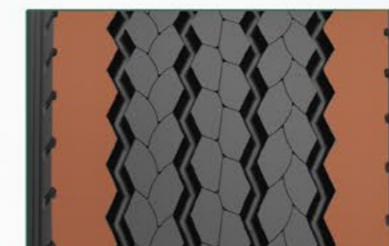
## TERRA MASTER GTR50

### TECHNICAL FEATURE

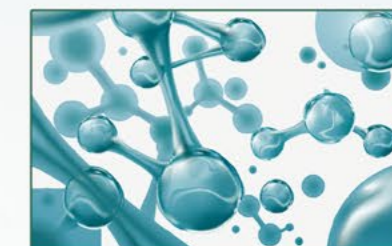
Four grooves with zigzag designed provide excellent stone ejection and groove crack prevention.



Wide and solid shoulder design guarantee long mileage.



Special tread compound guarantees less fuel consumption with lower rolling resistance.



### SIZE RANGE Trailer



| SIZE        | PR | LI/SS      | TREAD DEPTH (MM) | M+S |   |   |   | dB |   |
|-------------|----|------------|------------------|-----|---|---|---|----|---|
| 385/65R22.5 | 20 | 160K(158L) | 15               | ✓   | ✓ | C | C | 72 | B |
| 385/65R22.5 | 24 | 164K       | 15               | ✓   | ✓ | C | C | 72 | B |
| 425/65R22.5 | 20 | 165K       | 16               | ✓   | ✓ | C | C | 72 | B |
| 445/65R22.5 | 20 | 169K       | 16               | ✓   | ✓ | C | C | 72 | B |

# THE MIX SERVICE SERIES



- Used both on and off road
- Heavy loads and outstanding durability
- Special protection against the damage caused by the road condition



**TERRA MASTER  
GAM66**

**TERRA MASTER  
GDM77**

**TERRA MASTER  
GAMSS**



## Reinforced bead structure design

The reinforced structure of the tire bead is used to meet the load demand in the ON/OFF application, and the product life is longer.



## Special cutting resistance compound design

Special cutting resistance compound helps resist chipping, chunking and tearing for a better mileage.



## High tensile cord design

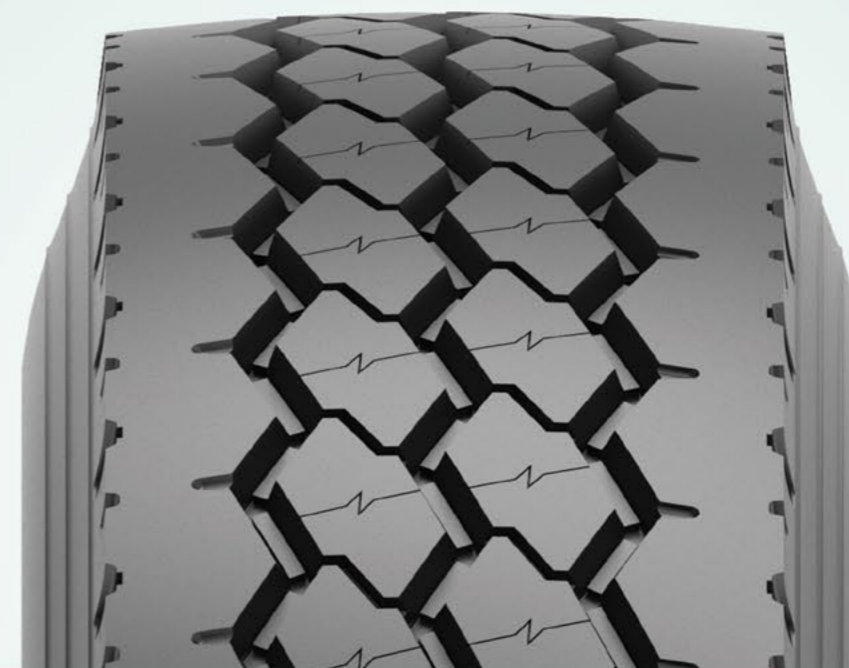
High tensile cord is used in tyres to ensure their load capacity and safety in harsh operating environments.

Highway

Country Road

City

Construction Site



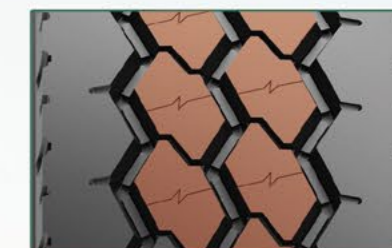
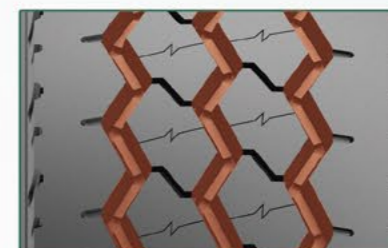
# TERRA MASTER GAM66

## TECHNICAL FEATURE

Wider tread width and solid shoulder offer improved tread stiffness, leading to an increased mileage .

Three zigzag grooves and multi-angular sipes improve traction and braking performance.

Polygonal block pattern provides outstanding traction and braking performance.



# TERRA MASTER GAM66



M+S

New generation all position tyre with latest technology for on & off operation.

## SIZE RANGE All Axle



| SIZE        | PR | LI/SS    | TREAD DEPTH (MM) | M+S |   |   |   | dB |   |
|-------------|----|----------|------------------|-----|---|---|---|----|---|
| 13R22.5     | 20 | 156/151K | 16.5             | ✓   | ✓ | D | C | 73 | B |
| 315/80R22.5 | 20 | 156/153K | 17.5             | ✓   | ✓ | D | D | 73 | B |



# TERRA MASTER GDM77

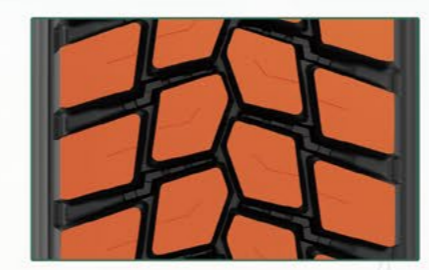


Premium tyre designed for drive position applicable for rough road surface.

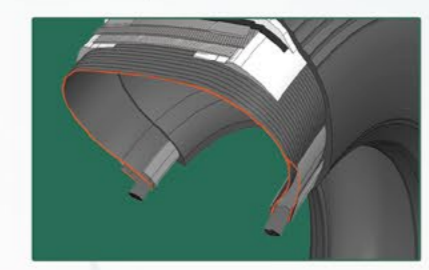
## TERRA MASTER GDM77

### TECHNICAL FEATURE

Aggressive direction tread with robust tread blocks providing extra traction for on/off road condition.



The reinforced bead construction provides excellent structural durability to extend tyre life.



Special rubber compound ensuring more resistance to cuts and tearing.



### SIZE RANGE Drive



| SIZE        | PR | LI/SS    | TREAD DEPTH (MM) | M+S |   |   |   | dB |   |
|-------------|----|----------|------------------|-----|---|---|---|----|---|
| 13R22.5     | 20 | 156/151K | 23               | ✓   | ✓ | D | C | 74 | B |
| 315/80R22.5 | 20 | 156/153K | 23               | ✓   | ✓ | D | D | 74 | B |



# TERRA MASTER GAMSS

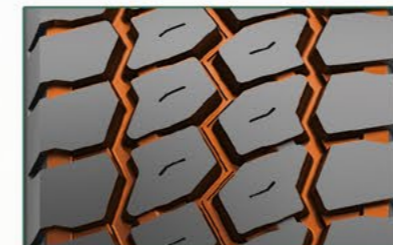


New strong casing multi-service tyre for on & off operation.

## TERRA MASTER GAMSS

### TECHNICAL FEATURE

Aggressive multi-service, all position tread pattern promises excellent traction in ON/OFF road service.



Outstanding self-cleaning tread design ensures long-life service in ON/OFF road conditions.



Robust tread blocks and rugged casing allows for heavy loads and resist casing penetration and damage.



### SIZE RANGE All Axle



| SIZE        | PR | LI/SS      | TREAD DEPTH (MM) | M+S |   |   |   | dB |   |
|-------------|----|------------|------------------|-----|---|---|---|----|---|
| 385/65R22.5 | 20 | 160K(158L) | 18               | ✓   | ✓ | C | C | 74 | B |
| 385/65R22.5 | 24 | 164K       | 18               | ✓   | ✓ | C | C | 74 | B |
| 425/65R22.5 | 20 | 165K       | 18               | ✓   | ✓ | C | C | 74 | B |
| 445/65R22.5 | 20 | 169K       | 18               | ✓   | ✓ | C | C | 74 | B |

# WINTER SERIES



- Designed for winter use only
- Extraordinary traction on snow and ice road surface



**TERRA MASTER  
GSW88**

**TERRA MASTER  
GDW99**



## 3D

### Advanced Siping Technology

Effective 3D siping technology improves winter grip in both acceleration and braking on packed snow and ice.



### Multi-Purpose Performance Formula

Nano-silica and high-quality rubber tread compounds ensure the tyre's durability even in extreme weather conditions



### Safety and Beyond

M+S (Mud + Snow) marked tyres and Three-Peak Mountain Snowflake (3PMS-F) tyres deliver winter performance that is legally certified

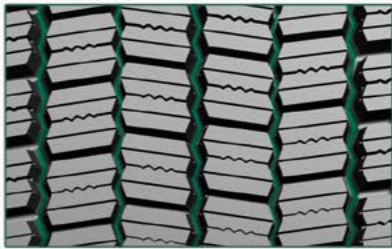




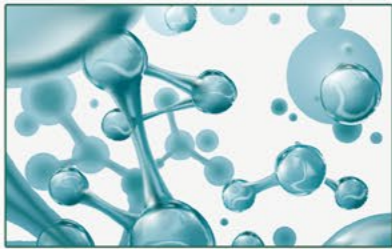
# TERRA MASTER GSW88

## TECHNICAL FEATURE

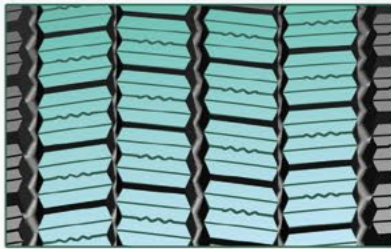
Wide and deep circumferential grooves enhances removal of snow and ice.



Specific tread compound keep rubber softness in low temperature with good performance.



Wide tread with advanced block and sipe design provides extra traction for Snow and ice road conditions.



## SIZE RANGE Snow Proof/Steer Axle



| SIZE        | PR | LI/SS               | TREAD DEPTH (MM) | M+S | SNOW PROOF | WET TRACTION | WET TRACTION | dB | NOISE |
|-------------|----|---------------------|------------------|-----|------------|--------------|--------------|----|-------|
| 295/80R22.5 | 18 | 154/149L            | 18               | ✓   | ✓          | E            | C            | 73 | B     |
| 315/80R22.5 | 18 | 154/151M (156/153L) | 18               | ✓   | ✓          | E            | C            | 73 | B     |
| 315/70R22.5 | 20 | 156/150L (152/148M) | 17               | ✓   | ✓          | E            | C            | 73 | B     |
| 385/55R22.5 | 20 | 160K                | 15               | ✓   | ✓          | D            | B            | 74 | B     |
| 385/65R22.5 | 20 | 160K                | 16               | ✓   | ✓          | D            | B            | 74 | B     |
|             | 24 | 164K                | 16               | ✓   | ✓          | D            | B            | 74 | B     |

# TERRA MASTER GSW88



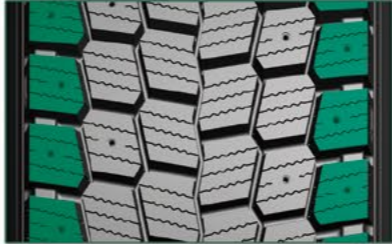
New Steer tyre with WINDFORCE's latest technology for winter application.



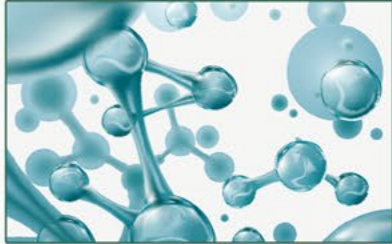
# TERRA MASTER GDW99

## TECHNICAL FEATURE

Wide open shoulder deliver additional traction without compromising tread life.



Specific tread compound keep rubber softness in low temperature with good performance.



Studable tread design provides extra traction for snow and ice road conditions.



## SIZE RANGE Snow Proof/Drive Axle



| SIZE        | PR | LI/SS               | TREAD DEPTH (MM) | M+S | SNOW | WET | WET | dB | NOISE |
|-------------|----|---------------------|------------------|-----|------|-----|-----|----|-------|
| 295/80R22.5 | 18 | 154/149L            | 21               | ✓   | ✓    | E   | C   | 74 | B     |
| 315/80R22.5 | 18 | 156/153K (154/151L) | 21               | ✓   | ✓    | E   | C   | 74 | B     |
| 315/70R22.5 | 20 | 154/150K (152/148L) | 19               | ✓   | ✓    | E   | C   | 74 | B     |

# TERRA MASTER GDW99



Designed for excellent winter traction in extreme weather conditions on a variety of surfaces.





**QINGDAO LANDSPIDER TIRE CORP.,LTD**

**[WWW.LANDSPIDERTIRE.COM](http://WWW.LANDSPIDERTIRE.COM)**