

AUTOCRUZE

Passenger Car, SUV and Light truck



TIRE CATALOG 2026



» COMPANY PROFILE

CONTENTS

AUTOCRUZE: Where Innovation Meets the Open Road

At AUTOCRUZE, we engineer revolutions in motion, where advanced technology dances with the rhythm of the road.

Born from the fusion of biomimetic design and quantum material science, our tires are silent revolutionaries beneath every vehicle. They are more than just rubber meeting asphalt; they are adaptive ecosystems that transform mundane drives into symphonies of precision engineering.

Within our Industry 4.0 plant:

- 12-million unit annual capacity
- AI-driven quality control with micron-level accuracy
- Closed-loop sustainable manufacturing system
- Strategic OEM partner to global automotive leaders

AUTOCRUZE: Your Journey, Perfected.



01

CATCHFORS PCR



05

CATCHFORS UHP



09

EAGLEFORS UHP



11

CATCHFORS H/T



13

EAGLEFORS H/T



15

CATCHFORS ATII



19

EAGLEFORS ATX



CATCHFORS PCR

ECO PCR

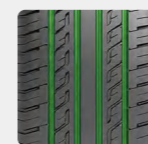
Eco-Friendly with low rolling resistance, lifespan and good breaking performance tire for passenger cars.

UTQG: 480 A A(B) M + S

RANGE:	13-16
SPEED RATE:	H/T/V
ASPECT RATIO:	50-80
SECTION WIDTH:	155-235

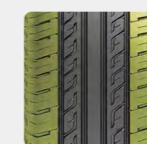


CATCHFORS PCR



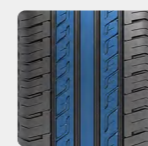
TECHNICAL FEATURE A

Four wide circumferential tread grooves and lateral grooves with fine sipes provide efficient water evacuation, outstanding wet performance.



TECHNICAL FEATURE B

Continuous outside tread blocks enhance excellent performance and precise control when cornering at high speed. The special rib segment design optimize contact pressure distribution, improve road contact area and provide precise control. The serrated groove walls absorb noise and deliver a quieter ride.



TECHNICAL FEATURE C

Continuous block patterns on shoulder enhance the ride stability at high speed cornering.

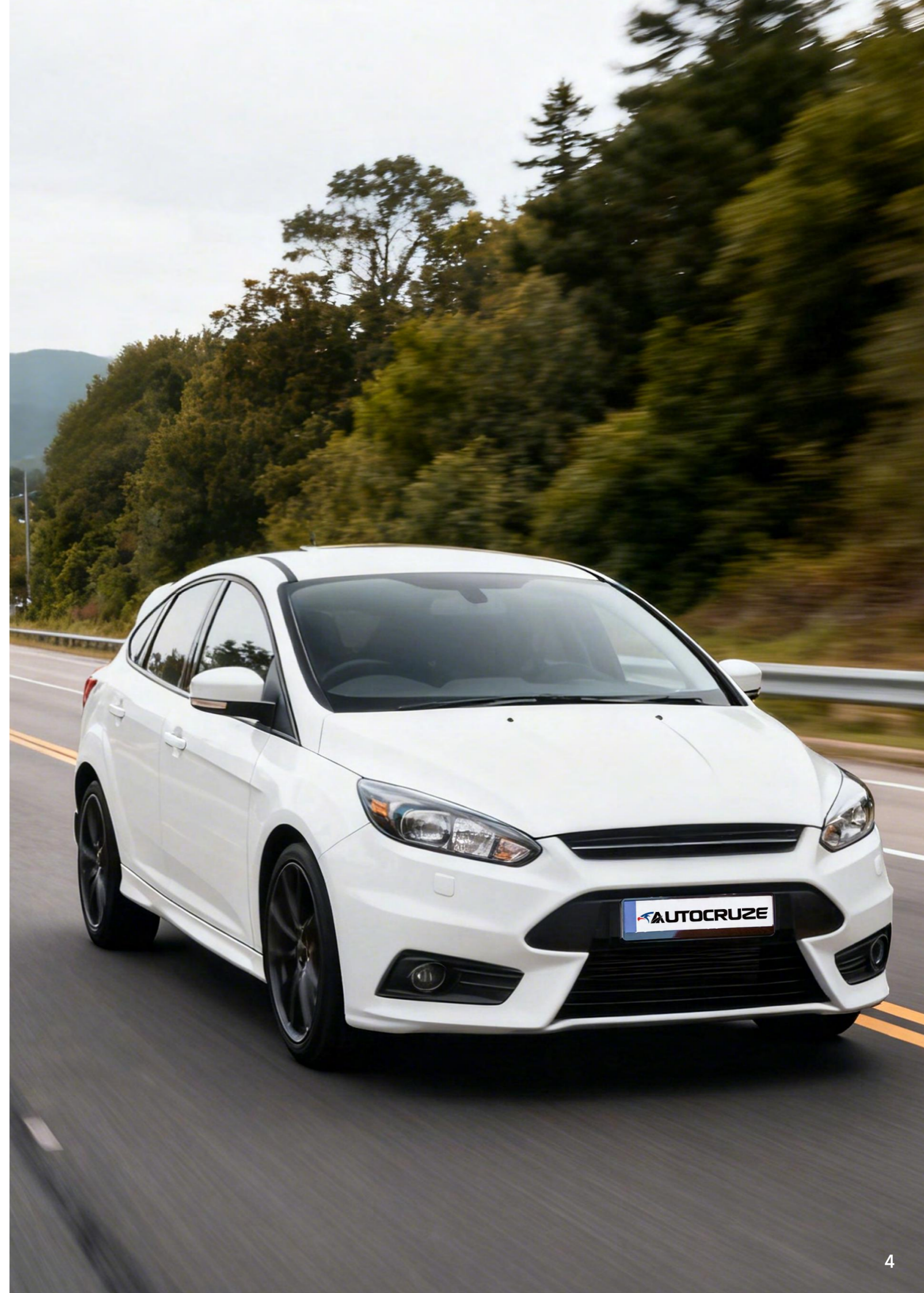


TECHNICAL FEATURE D

Special tread compound delivers excellent grip on both dry and wet roads and reduce the rolling resistance to save oil and protect environment.

Wheel Diameter	Size Description	Tread Depth MM	Depth 1/32"	Sidewall	Standard Rim	Section Width (mm)	OA. Diameter (mm)	Max. Pressure (kpa/psi)	M+S
13	155/65R13 73T	7.1	8.9	BSW	5.0	157	532	300/44	✓
	155/70R13 75T	7.1	8.9	BSW	4.5	157	548	300/44	✓
	155/80R13 79T	7.1	8.9	BSW	4.5	157	578	300/44	✓
	165/65R13 77T	7.1	8.9	BSW	5.0	170	544	300/44	✓
	165/70R13 79T	6.9	8.7	BSW	5.0	170	562	300/44	✓
	165/80R13 83T	6.9	8.7	BSW	4.5	165	594	300/44	✓
	175/60R13 77H	7.1	8.9	BSW	5.0	177	540	300/44	✓
	175/70R13 82T	6.3	7.9	BSW	5.0	177	576	300/44	✓
	185/60R13 80H	7.3	9.2	BSW	5.0	189	552	300/44	✓
	185/70R13 86T	7.3	9.2	BSW	5.5	189	590	300/44	✓
14	155/65R14 75H	7.1	8.9	BSW	5.0	154	557	300/44	✓
	165/60R14 75H	6.8	8.6	BSW	5.0	170	554	300/44	✓
	165/65R14 79H	7.1	8.9	BSW	6.0	170	570	300/44	✓
	165/70R14 81H	6.9	8.7	BSW	6.0	170	588	300/44	✓
	175/65R14 82H	6.3	7.9	BSW	5.5	177	584	300/44	✓
	175/70R14 84H	6.3	7.9	BSW	5.5	177	602	300/44	✓
	185/50R14 77V	7.3	9.2	BSW	5.5	194	542	300/44	✓
	185/55R14 80H	6.8	8.6	BSW	6.0	194	560	300/44	✓
	185/60R14 82H	7.3	9.2	BSW	6.0	189	578	300/44	✓
	185/65R14 86H	6.8	8.6	BSW	6.0	189	596	300/44	✓
	185/70R14 88H	6.8	8.6	BSW	6.0	189	616	300/44	✓
	195/60R14 86H	6.8	8.6	BSW	6.0	201	590	300/44	✓
	195/65R14 89H	6.8	8.6	BSW	6.0	201	610	300/44	✓
	195/70R14 91H	6.8	8.6	BSW	6.0	201	630	300/44	✓
	205/60R14 88H	7.6	9.6	BSW	6.0	209	602	300/44	✓
205/70R14 95H	7.6	9.6	BSW	6.0	209	644	300/44	✓	

Wheel Diameter	Size Description	Tread Depth MM	Depth 1/32"	Sidewall	Standard Rim	Section Width (mm)	OA. Diameter (mm)	Max. Pressure (kpa/psi)	M+S
15	145/65R15 72T	7.1	8.9	BSW	4.5	150	569	300/44	✓
	155/60R15 74T	7.1	8.9	BSW	5.0	157	567	300/44	✓
	165/60R15 77H	6.8	8.6	BSW	5.0	170	579	300/44	✓
	165/65R15 81H	7.1	8.9	BSW	5.0	170	595	300/44	✓
	175/55R15 77H	7.1	8.9	BSW	5.5	182	573	300/44	✓
	175/60R15 81H	7.1	8.9	BSW	5.0	177	591	300/44	✓
	175/65R15 84H	6.3	7.9	BSW	5.0	177	609	300/44	✓
	185/55R15 82V	7.1	8.9	BSW	6.0	194	585	300/44	✓
	185/60R15 88HXL	7.3	9.2	BSW	5.5	189	603	340/50	✓
	185/65R15 88H	6.8	8.6	BSW	5.5	189	621	300/44	✓
	195/60R15 88V	6.8	8.6	BSW	6.0	201	615	300/44	✓
	195/65R15 91V	6.8	8.6	BSW	6.0	201	635	300/44	✓
	205/60R15 91V	7.6	9.6	BSW	6.0	209	627	300/44	✓
	205/65R15 94V	7.6	9.6	BSW	6.0	209	647	300/44	✓
	205/70R15 96H	7.6	9.6	BSW	6.0	209	669	300/44	✓
	215/65R15 100HXL	7.6	9.6	BSW	6.5	221	661	340/50	✓
215/70R15 98H	7.6	9.6	BSW	6.5	221	683	300/44	✓	
225/70R15 100H	7.1	8.9	BSW	6.5	228	697	300/44	✓	
16	175/50R16 77V	7.1	8.9	BSW	5.5	182	582	300/44	✓
	185/50R16 81V	7.3	9.2	BSW	6.0	194	592	300/44	✓
	185/55R16 83H	6.8	8.6	BSW	6.0	194	610	300/44	✓
	195/60R16 89H	7.6	9.6	BSW	6.0	201	641	300/44	✓
	205/55R16 91V	6.8	8.6	BSW	6.5	214	632	300/44	✓
	205/60R16 92V	7.6	9.6	BSW	6.0	209	652	300/44	✓
	205/65R16 95H	7.6	9.6	BSW	6.0	209	672	300/44	✓
	215/60R16 95V	6.8	8.6	BSW	6.5	221	664	300/44	✓
	215/65R16 102HXL	7.6	9.6	BSW	6.5	221	686	340/50	✓
	225/60R16 102HXL	7.6	9.6	BSW	6.5	228	676	340/50	✓
	225/65R16 100H	7.6	9.6	BSW	6.5	228	698	300/44	✓
235/60R16 100H	7.8	9.8	BSW	7.0	240	688	300/44	✓	



CATCHFORS UHP

SPORTY PERFORMANCE PCR

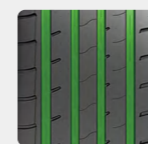
Ultra high performance tire provides ultimate performance during high speed drive.

UTQG: 420 A A M+S

RANGE:	15-21
SPEED RATE:	V/W
ASPECT RATIO:	30-60
SECTION WIDTH:	185-315



CATCHFORS UHP



TECHNICAL FEATURE A

Four wide circumferential tread grooves and lateral grooves with fine sipes provide efficient water evacuation, outstanding wet performance.



TECHNICAL FEATURE B

The unique ribbed tread pattern design optimizes pressure distribution and increases the contact area; the intermittent rubber strip design disrupts resonance, effectively reducing noise for a quiet and comfortable ride.



TECHNICAL FEATURE C

Asymmetric tread pattern design, combined with an adaptive tread design specifically engineered for sport-oriented ultra-high performance, ensures exceptional stability and riding comfort even on both wet and dry road surfaces.



TECHNICAL FEATURE D

Special tread compound delivers excellent grip on both dry and wet roads and reduces the rolling resistance to save oil and protect environment.

Wheel Diameter	Size Description	Tread Depth MM 1/32"		Sidewall	Standard Rim	Section Width (mm)	OA. Diameter (mm)	Max. Pressure (kpa/psi)	M+S
15	195/45R15 82VXL	7.0	8.8	BSW	4.5	150	509	340/50	✓
	195/50R15 82V	7.0	8.8	BSW	6.0	201	577	300/44	✓
	195/55R15 85V	7.0	8.8	BSW	6.0	201	595	300/44	✓
	205/50R15 86V	7.0	8.8	BSW	5.0	177	551	300/44	✓
16	185/55R16 87VXL	7.0	8.8	BSW	5.0	157	532	340/50	✓
	195/45R16 84VXL	7.0	8.8	BSW	4.5	157	548	340/50	✓
	195/50R16 88VXL	7.0	8.8	BSW	6.0	201	602	340/50	✓
	195/55R16 91VXL	7.0	8.8	BSW	5.0	170	544	340/50	✓
	205/45ZR16 87WXL	7.0	8.8	BSW	5.0	170	562	340/50	✓
	205/50ZR16 91WXL	7.0	8.8	BSW	4.5	165	594	340/50	✓
	205/55ZR16 94WXL	7.0	8.8	BSW	5.0	177	540	340/50	✓
	215/40ZR16 86WXL	7.0	8.8	BSW	5.0	177	576	340/50	✓
	215/45ZR16 90WXL	7.0	8.8	BSW	5.0	189	552	340/50	✓
	215/55ZR16 97WXL	7.0	8.8	BSW	5.5	189	590	340/50	✓
17	225/50ZR16 96WXL	7.0	8.8	BSW	4.5	154	557	340/50	✓
	225/55ZR16 99WXL	7.0	8.8	BSW	5.0	170	554	340/50	✓
	195/40ZR17 81WXL	7.0	8.8	BSW	5.0	170	554	340/50	✓
	195/45ZR17 85WXL	7.0	8.8	BSW	5.0	170	570	340/50	✓
	205/40ZR17 84WXL	7.0	8.8	BSW	5.0	170	588	340/50	✓
	205/45ZR17 88WXL	7.0	8.8	BSW	5.0	170	588	340/50	✓
	205/50ZR17 93WXL	7.0	8.8	BSW	5.0	177	584	340/50	✓
	205/55ZR17 95WXL	7.0	8.8	BSW	5.0	177	584	340/50	✓
	215/45ZR17 91WXL	7.0	8.8	BSW	5.0	177	602	340/50	✓
	215/50ZR17 95WXL	7.0	8.8	BSW	5.0	177	602	340/50	✓
	215/55ZR17 98WXL	7.0	8.8	BSW	6.0	194	542	340/50	✓
	225/45ZR17 94WXL	7.0	8.8	BSW	6.0	194	560	340/50	✓
	225/50ZR17 98WXL	7.0	8.8	BSW	5.5	189	578	340/50	✓
	225/55ZR17 101WXL	7.0	8.8	BSW	5.5	189	596	340/50	✓
	235/45ZR17 97WXL	7.0	8.8	BSW	5.5	189	616	340/50	✓
235/50ZR17 100WXL	7.0	8.8	BSW	6.0	201	590	340/50	✓	
235/55ZR17 103WXL	7.0	8.8	BSW	6.0	201	610	340/50	✓	
245/40ZR17 95WXL	7.0	8.8	BSW	6.0	201	630	340/50	✓	
245/45ZR17 99WXL	7.0	8.8	BSW	6.0	209	602	340/50	✓	
255/40ZR17 98WXL	7.0	8.8	BSW	9.0	260	636	340/50	✓	

CATCHFORS UHP

Wheel Diameter	Size Description	Tread Depth		Sidewall	Standard Rim	Section Width (mm)	OA. Diameter (mm)	Max. Pressure (kpa/psi)	M+S
		MM	1/32"						
18	215/35ZR18 84WXL	7.0	8.8	BSW	7.5	218	607	340/50	✓
	215/40ZR18 89WXL	7.0	8.8	BSW	7.5	218	629	340/50	✓
	215/45ZR18 93WXL	7.0	8.8	BSW	7.5	213	650	340/50	✓
	215/55ZR18 99WXL	7.0	8.8	BSW	7.0	226	693	340/50	✓
	225/40ZR18 92WXL	7.0	8.8	BSW	8.0	230	637	340/50	✓
	225/45ZR18 95WXL	7.0	8.8	BSW	7.5	225	659	340/50	✓
	225/50ZR18 99WXL	7.0	8.8	BSW	7.5	228	683	340/50	✓
	225/55ZR18 102WXL	7.0	8.8	BSW	7.0	233	705	340/50	✓
	235/40ZR18 95WXL	7.0	8.8	BSW	8.5	241	645	340/50	✓
	235/45ZR18 98WXL	7.0	8.8	BSW	8.0	240	667	340/50	✓
	235/50ZR18 101WXL	7.0	8.8	BSW	7.5	243	693	340/50	✓
	235/55ZR18 104WXL	7.0	8.8	BSW	7.5	245	715	340/50	✓
	245/40ZR18 97WXL	7.0	8.8	BSW	8.5	248	653	340/50	✓
	245/45ZR18 100WXL	7.0	8.8	BSW	8.0	243	677	340/50	✓
	255/35ZR18 94WXL	7.0	8.8	BSW	9.0	260	635	340/50	✓
	255/40ZR18 99WXL	7.0	8.8	BSW	9.0	263	661	340/50	✓
	255/45ZR18 103WXL	7.0	8.8	BSW	8.5	257	687	340/50	✓
	255/55R18 109VXL	7.0	8.8	BSW	8.0	265	737	340/50	✓
	265/35ZR18 97WXL	7.8	9.8	BSW	8.0	271	643	340/50	✓
	275/35ZR18 99WXL	7.8	9.8	BSW	9.5	278	650	340/50	✓
	215/35ZR19 85WXL	7.0	8.8	BSW	7.5	221	634	340/50	✓
	225/35ZR19 88WXL	7.0	8.8	BSW	8.0	230	641	340/50	✓
	225/40ZR19 93WXL	7.0	8.8	BSW	8.0	230	663	340/50	✓
	225/45ZR19 96WXL	7.0	8.8	BSW	7.5	225	685	340/50	✓
	225/55ZR19 103WXL	7.0	8.8	BSW	7.0	233	732	340/50	✓
	235/35ZR19 91WXL	7.0	8.8	BSW	8.5	241	647	340/50	✓
235/40ZR19 96WXL	7.0	8.8	BSW	8.5	241	671	340/50	✓	
235/45ZR19 99WXL	7.0	8.8	BSW	8.0	236	695	340/50	✓	
235/50ZR19 103WXL	7.0	8.8	BSW	7.5	245	719	340/50	✓	
235/55ZR19 105WXL	7.0	8.8	BSW	7.5	245	741	340/50	✓	
245/35ZR19 93WXL	7.0	8.8	BSW	8.5	248	655	340/50	✓	
245/40ZR19 98WXL	7.0	8.8	BSW	8.5	248	679	340/50	✓	
245/45ZR19 102WXL	7.0	8.8	BSW	8.0	243	703	340/50	✓	
245/55ZR19 107WXL	7.0	8.8	BSW	7.5	253	753	340/50	✓	
255/30ZR19 91WXL	7.0	8.8	BSW	9.0	260	637	340/50	✓	
255/35ZR19 96WXL	7.0	8.8	BSW	9.0	260	661	340/50	✓	
255/40ZR19 100WXL	7.0	8.8	BSW	9.0	260	687	340/50	✓	
255/45ZR19 104WXL	7.0	8.8	BSW	8.5	255	715	340/50	✓	
255/50ZR19 107WXL	7.0	8.8	BSW	8.0	265	739	340/50	✓	
255/55R19 111VXL	7.0	8.8	BSW	8.0	265	763	340/50	✓	
265/30ZR19 93WXL	7.8	9.8	BSW	9.5	271	643	340/50	✓	
265/50R19 110VXL	7.0	8.8	BSW	8.5	277	749	340/50	✓	
275/30ZR19 96WXL	7.8	9.8	BSW	9.5	278	649	340/50	✓	
275/35ZR19 100WXL	7.8	9.8	BSW	9.5	278	675	340/50	✓	
275/40ZR19 105WXL	7.8	9.8	BSW	9.5	278	703	340/50	✓	
275/45ZR19 108WXL	7.8	9.8	BSW	9.0	278	730	340/50	✓	
275/55R19 111V	7.8	9.8	BSW	8.5	280	787	300/44	✓	
285/45ZR19 111WXL	7.8	9.8	BSW	9.5	285	737	340/50	✓	

Wheel Diameter	Size Description	Tread Depth		Sidewall	Standard Rim	Section Width (mm)	OA. Diameter (mm)	Max. Pressure (kpa/psi)	M+S
		MM	1/32"						
20	225/35ZR20 90WXL	7.0	8.8	BSW	8.0	230	644	340/50	✓
	235/30ZR20 88WXL	7.0	8.8	BSW	8.5	242	650	340/50	✓
	235/55ZR20 105WXL	7.0	8.8	BSW	7.5	245	766	340/50	✓
	245/30ZR20 97WXL	7.0	8.8	BSW	8.5	247	657	340/50	✓
	245/35ZR20 95WXL	7.0	8.8	BSW	8.5	248	680	340/50	✓
	245/40ZR20 99WXL	7.0	8.8	BSW	8.5	248	704	340/50	✓
	245/45ZR20 103WXL	7.0	8.8	BSW	8.0	243	728	340/50	✓
	255/30ZR20 92WXL	7.0	8.8	BSW	9.0	260	662	340/50	✓
	255/35ZR20 97WXL	7.0	8.8	BSW	9.0	260	686	340/50	✓
	255/45ZR20 105WXL	7.0	8.8	BSW	8.5	255	738	340/50	✓
	255/50ZR20 109WXL	7.0	8.8	BSW	8.0	265	764	340/50	✓
	255/55R20 110VXL	7.0	8.8	BSW	8.0	260	789	340/50	✓
	265/45ZR20 108WXL	7.8	9.8	BSW	9.0	266	746	340/50	✓
	265/50R20 111VXL	7.8	9.8	BSW	9.0	277	774	340/50	✓
	275/30ZR20 97WXL	7.8	9.8	BSW	9.5	278	674	340/50	✓
	275/35ZR20 102WXL	7.8	9.8	BSW	9.5	278	700	340/50	✓
	275/40ZR20 106WXL	7.8	9.8	BSW	9.5	278	728	340/50	✓
	275/45ZR20 110WXL	7.8	9.8	BSW	9.0	273	756	340/50	✓
	275/50R20 113VXL	7.8	9.8	BSW	8.5	284	784	340/50	✓
	275/55R20 117VXL	7.8	9.8	BSW	8.5	284	810	340/50	✓
	275/60R20 115H	7.8	9.8	BSW	8.0	279	838	300/44	✓
	275/60R20 115V	7.8	9.8	BSW	8.0	279	838	300/44	✓
	285/50R20 116VXL	7.8	9.8	BSW	9.0	297	794	340/50	✓
	305/40ZR20 112WXL	7.8	9.8	BSW	11.0	313	752	340/50	✓
	315/35ZR20 110WXL	7.8	9.8	BSW	11.0	320	728	340/50	✓
	21	245/35ZR21 96WXL	7.0	8.8	BSW	8.5	245	705	340/50
275/30ZR21 98WXL		7.8	9.8	BSW	9.5	278	698	340/50	✓
275/40ZR21 107WXL		7.8	9.8	BSW	9.5	278	753	340/50	✓
275/45ZR21 110WXL		7.8	9.8	BSW	9.5	278	780	340/50	✓
295/35ZR21 107WXL		7.8	9.8	BSW	10.5	301	739	340/50	✓
295/40ZR21 111WXL		7.8	9.8	BSW	10.5	301	769	340/50	✓
315/35ZR21 111WXL		7.8	9.8	BSW	11.0	320	753	340/50	✓
315/40ZR21 115WXL		7.8	9.8	BSW	11.0	323	784	340/50	✓



EAGLEFORS UHP

ULTRA HIGH PERFORMANCE

The eagle-bionic striking pattern with all-season performance is specially designed for SUV sports coupe and luxury sedan applications, ensuring reliable performance and attractive driving.

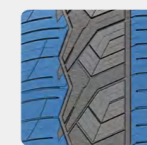
UTQG: 420 A A M+S

RANGE:	22-26
SPEED RATE:	W
ASPECT RATIO:	25-50
SECTION WIDTH:	245-305



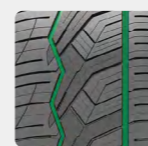
TECHNICAL FEATURE A

Asymmetrical tread block geometry for even wearing, excellent handling, and highspeed highway stability.



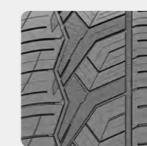
TECHNICAL FEATURE B

Large outside blocks for enhanced braking and cornering responsiveness.



TECHNICAL FEATURE C

Two wide circumferential grooves, efficiently channel water away to minimize hydroplaning.



TECHNICAL FEATURE D

Variable pitch layout, optimized sipes distribution and grooves design to improve driving comfort.

Wheel Diameter	Size Description	Tread Depth MM	1/32"	Sidewall	Standard Rim	Section Width (mm)	OA. Diameter (mm)	Max. Pressure (kpa/psi)	M+S
22	245/30ZR22 92WXL	7.6	9.6	BSW	8.5	248	707	340/50	✓
	255/30ZR22 95WXL	7.6	9.6	BSW	9.0	260	713	340/50	✓
	265/30ZR22 97WXL	7.6	9.6	BSW	9.5	271	719	340/50	✓
	265/35ZR22 102WXL	7.6	9.6	BSW	9.5	271	745	340/50	✓
	265/40ZR22 106WXL	7.6	9.6	BSW	9.5	271	771	340/50	✓
	275/50ZR22 115WXL	7.6	9.6	BSW	8.5	284	835	340/50	✓
	285/35ZR22 106WXL	7.6	9.6	BSW	10.0	290	759	340/50	✓
	285/40ZR22 110WXL	7.6	9.6	BSW	10.0	290	787	340/50	✓
	285/45ZR22 114WXL	7.6	9.6	BSW	9.5	285	815	340/50	✓
	295/25ZR22 97WXL	7.6	9.6	BSW	10.5	301	707	340/50	✓
	305/40ZR22 114WXL	7.6	9.6	BSW	11.0	313	803	340/50	✓
305/45ZR22 118WXL	7.6	9.6	BSW	10.0	303	833	340/50	✓	
24	255/30ZR24 97WXL	7.6	9.6	BSW	9.0	260	764	340/50	✓
	275/25ZR24 96WXL	7.6	9.6	BSW	10.0	283	748	340/50	✓
	295/35ZR24 110WXL	7.6	9.6	BSW	10.5	301	816	340/50	✓
	305/35ZR24 112WXL	7.6	9.6	BSW	11.0	313	824	340/50	✓
26	295/30ZR26 107WXL	7.6	9.6	BSW	10.5	301	838	340/50	✓
	305/30ZR26 109WXL	7.6	9.6	BSW	11.0	313	844	340/50	✓

CATCHFORS H/T

CITY SUV

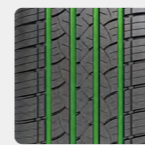
CATCHFORS H/T is designed for crossovers and SUVs, significantly reducing road noise for smooth and quiet rides every day. It features enhanced wet traction for improved driving safety, particularly on longer trips.

UTQG: 500 A A M+S

RANGE:	16-18
SPEED RATE:	H/V
ASPECT RATIO:	55-70
SECTION WIDTH:	215-285

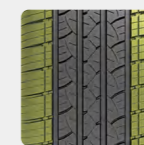


CATCHFORS H/T



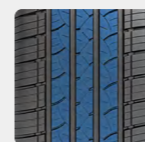
TECHNICAL FEATURE A

Four wide circumferential tread grooves deliver the ride stability and offer excellent performance on wet conditions. Improved grooves and bead profile design offer better ride stability, endurance and handling performance.



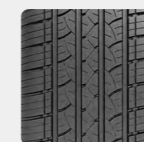
TECHNICAL FEATURE B

The open shoulder grooves prevent aquaplaning with enhanced wet grip performance and provide excellent water evacuation. Continuous tread blocks on both shoulder give great support to enhance the ride stability when cornering.



TECHNICAL FEATURE C

Variable pitch pattern and solid center ribs improve the ride stability, reduce the noise and deliver a comfortable ride.



TECHNICAL FEATURE D

High-density sipes with special compound deliver a smooth ride and improve traction on dry and wet roads. Seamless nylon belt and robust structural design deliver a reinforced carcass, improving reliability and durability.

Wheel Diameter	Size Description		Tread Depth MM 1/32"		Sidewall	Standard Rim	Section Width (mm)	OA. Diameter (mm)	Max. Pressure (kpa/psi)	M+S
16	215/70R16	100H	8.3	10.5	BSW	6.5	221	708	300/44	✓
	225/70R16	107HXL	8.3	10.5	BSW	6.5	228	722	340/50	✓
	235/70R16	106H	8.3	10.5	BSW	7.0	240	736	300/44	✓
	245/70R16	111HXL	8.3	10.5	BSW	7.0	248	750	340/50	✓
	255/65R16	109H	8.3	10.5	BSW	7.5	262	737	300/44	✓
	255/70R16	111H	8.3	10.5	BSW	7.5	260	764	300/44	✓
	265/70R16	112H	8.3	10.5	BSW	8.0	272	778	300/44	✓
	275/70R16	114H	8.3	10.5	BSW	8.0	279	792	300/44	✓
17	215/60R17	96H	8.3	10.5	BSW	6.5	221	690	300/44	✓
	215/60R17	100VXL	8.3	10.5	BSW	6.5	221	690	340/50	✓
	215/65R17	99H	8.3	10.5	BSW	6.5	221	710	300/44	✓
	225/60R17	103VXL	8.3	10.5	BSW	6.5	228	702	340/50	✓
	225/60R17	99H	8.3	10.5	BSW	6.5	228	702	300/44	✓
	225/65R17	102H	8.3	10.5	BSW	6.5	228	724	300/44	✓
	235/60R17	106VXL	8.3	10.5	BSW	7.0	240	714	340/50	✓
	235/65R17	108HXL	8.3	10.5	BSW	7.0	240	738	340/50	✓
	245/65R17	111HXL	8.3	10.5	BSW	7.0	248	750	340/50	✓
	245/70R17	110H	8.3	10.5	BSW	7.0	248	776	300/44	✓
	255/60R17	110VXL	8.3	10.5	BSW	7.5	260	738	340/50	✓
	255/65R17	110H	8.3	10.5	BSW	7.5	260	764	300/44	✓
	265/65R17	112H	8.3	10.5	BSW	8.0	272	776	300/44	✓
	265/70R17	115H	8.3	10.5	BSW	8.0	272	804	300/44	✓
275/65R17	115H	8.3	10.5	BSW	8.0	279	791	300/44	✓	
285/65R17	116H	8.3	10.5	BSW	8.5	292	802	300/44	✓	
18	225/60R18	104VXL	8.3	10.5	BSW	6.5	228	727	340/50	✓
	225/60R18	104HXL	8.3	10.5	BSW	6.5	228	727	340/50	✓
	235/60R18	107VXL	8.3	10.5	BSW	7.0	240	739	340/50	✓
	235/65R18	110HXL	8.3	10.5	BSW	7.0	240	763	340/50	✓
	245/60R18	105H	8.3	10.5	BSW	7.0	248	751	300/44	✓
	255/55R18	109VXL	8.3	10.5	BSW	8.0	265	737	340/50	✓
	255/60R18	112VXL	7.8	9.8	BSW	7.5	257	763	340/50	✓
	255/70R18	113H	8.3	10.5	BSW	7.5	260	815	300/44	✓
	265/60R18	110H	8.3	10.5	BSW	8.0	272	775	300/44	✓
	265/65R18	114H	8.3	10.5	BSW	8.0	272	801	300/44	✓
	265/70R18	116H	8.3	10.5	BSW	8.0	272	827	300/44	✓
	275/65R18	116H	8.3	10.5	BSW	8.0	279	815	300/44	✓
	285/60R18	120HXL	8.3	10.5	BSW	8.5	290	802	340/50	✓

EAGLEFORS H/T

HIGHWAY TERRAIN

The EAGLEFORS H/T, as a all-season light truck highway tire, is engineered to make the most of your on-road driving. Available in a wide range of sizes and offers an upgraded ride quality and versatile look for your light truck, suv, or crossover vehicle.

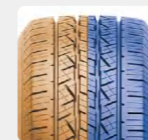
UTQG: S20 A A M+S

Only for P series

RANGE:	16-20
SPEED RATE:	R/V/S
ASPECT RATIO:	50-85
SECTION WIDTH:	215-275

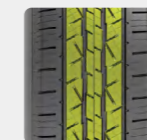


EAGLEFORS H/T



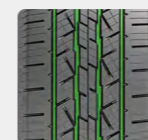
TECHNICAL FEATURE A

Symmetric, non-directional tread design enable easier rotations in turn to reduce irregular wear with continuous shoulder design.



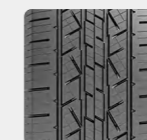
TECHNICAL FEATURE B

Optimized central 3-rib design provides increased dry and wet traction while improving highway stability.



TECHNICAL FEATURE C

Four deep and wide circumferential grooves to efficiently evacuate water and slush for better all season traction.



TECHNICAL FEATURE D

Various block pitches arrangement to reduce road noise for a more comfortable ride. Variable angle lateral grooves and sipes improve the wear life by minimizing irregular wear and for a smoother, quieter ride.

Wheel Diameter	Size Description		Tread Depth MM 1/32"		Sidewall	Standard Rim	Section Width (mm)	OA. Diameter (mm)	Max. Pressure (kpa/psi)	M+S
19	235/55R19	105VXL	8.3	10.5	BSW	7.5	245	741	340/50	✓
	245/55R19	107VXL	8.3	10.5	BSW	7.5	235	753	340/50	✓
20	235/55R20	102V	8.3	10.5	BSW	7.5	245	766	300/44	✓
	245/50R20	102V	8.3	10.5	BSW	7.5	253	754	300/44	✓
	255/50R20	109VXL	8.3	10.5	BSW	8.0	265	764	340/50	✓
	265/50R20	111VXL	8.3	10.5	BSW	8.5	277	774	340/50	✓
	275/55R20	117VXL	8.3	10.5	BSW	8.5	284	810	340/50	✓
	275/60R20	115V	8.3	10.5	BSW	8.0	279	838	300/44	✓

Wheel Diameter	Size Description		Tread Depth MM 1/32"		Sidewall	Standard Rim	Section Width (mm)	OA. Diameter (mm)	Max. Pressure (kpa/psi)	M+S
16	235/65R16C	121/119R	8.3	10.5	BSW	7.0	240	712	575/83	✓
	LT215/85R16	115/112S	8.3	10.5	BSW	6.0	216	772	550/80	✓
	LT225/75R16	115/112S	9.1	11.5	BSW	6.0	223	744	550/80	✓
	LT235/85R16	120/116S	9.1	11.5	BSW	6.5	235	806	550/80	✓
	LT245/75R16	120/116S	9.1	11.5	BSW	7.0	248	774	550/80	✓
	LT265/75R16	123/120S	9.9	12.5	BSW	7.5	267	804	550/80	✓
17	LT235/80R17	120/117R	9.1	11.5	BSW	6.5	235	808	550/80	✓
	LT245/70R17	119/116S	9.1	11.5	BSW	7.0	248	776	550/80	✓
	LT245/75R17	121/118S	9.1	11.5	BSW	7.0	248	800	550/80	✓
	LT265/70R17	123/120S	9.1	11.5	BSW	8.0	272	804	550/80	✓
18	LT275/65R18	123/120S	9.9	12.5	BSW	8.0	279	815	550/80	✓
	LT275/70R18	125/122S	9.9	12.5	BSW	7.0	248	801	550/80	✓

CATCHFORS A/TII

ALL TERRAIN

Robust all-terrain adaptability and anti-tear tread design, balancing off-road escape capability and highway comfort, is a versatile and durable choice for-core SUVs and pickups.

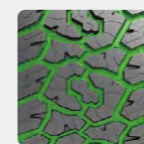
UTQG: S00 A B M+S

Only for P series

RANGE:	15-20
SPEED RATE:	H/R/S/T
ASPECT RATIO:	50-85
SECTION WIDTH:	215-315

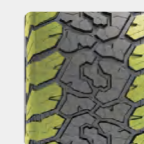


CATCHFORS A/TII



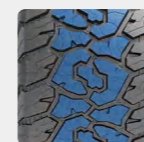
TECHNICAL FEATURE A

Four main zigzag grooves and rough lateral blocks provide excellent traction on all kinds of road conditions.



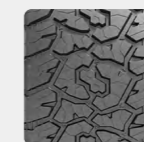
TECHNICAL FEATURE B

The open shoulder grooves prevent aquaplaning with enhanced wet grip performance and provide excellent water evacuation. The white letter styling provide a artistic image.



TECHNICAL FEATURE C

The block tread design with multiple sipes provide outstanding offroad traction and reduce tread damage on off-road condition.



TECHNICAL FEATURE D

Jointless Nylon band and strong structure design provided the strong carcass to enhance the reliability and durability. Special tread compound and wide footprint enhance tread life and deliver excellent braking on wet and dry roads.

Wheel Diameter	Size Description	Tread Depth MM	1/32"	Sidewall	Standard Rim	Section Width (mm)	OA. Diameter (mm)	Max. Pressure (kpa/psi)	M+S
15	LT215/75R15 C 100/97R	10.3	13.0	RWL	6.0	216	703	340/50	✓
	LT235/75R15 C 104/101R	10.8	13.6	RWL	6.5	235	733	340/50	✓
	31X10.50R15LT C 109S	11.8	14.9	RWL	8.5	268	775	350/51	✓
	32X11.50R15LT C 113R	10.8	13.6	RWL	9.0	292	813	350/51	✓
	33X12.50R15LT C 108R	11.8	14.9	RWL	10.0	320	838	350/51	✓
	35X12.50R15LT C 113R	10.8	13.6	RWL	10.0	326	890	350/51	✓
16	LT215/85R16 E 115/112R	10.8	13.6	RWL	6.0	216	772	550/80	✓
	LT225/75R16 E 115/112R	10.8	13.6	RWL	6.0	223	744	550/80	✓
	LT235/85R16 E 120/116R	10.8	13.6	RWL	6.5	235	806	550/80	✓
	LT245/70R16 D 113/110S	10.8	13.6	RWL	7.0	248	750	450/65	✓
	LT245/75R16 E 120/116R	10.8	13.6	RWL	7.0	248	774	550/80	✓
	LT265/70R16 E 121/118R	10.3	13.0	RWL	8.0	272	778	550/80	✓
	LT265/75R16 E 123/120R	10.3	13.0	RWL	7.5	267	804	550/80	✓
	LT285/75R16 E 126/123R	10.8	13.6	RWL	8.0	286	834	550/80	✓
	LT305/70R16 E 124/121R	10.8	13.6	RWL	9.0	310	838	550/80	✓
LT315/75R16 E 127/124R	11.8	13.6	RWL	8.5	326	886	550/80	✓	
17	LT245/65R17 D 111/108S	10.8	13.6	RWL	7.0	248	750	450/65	✓
	LT245/70R17 E 119/116R	10.8	13.6	RWL	7.0	248	776	550/80	✓
	LT245/75R17 E 121/118R	11.3	14.2	RWL	7.0	248	800	550/80	✓
	LT265/65R17 E 120/117S	10.3	13.0	RWL	7.0	272	776	550/80	✓
	LT265/70R17 E 121/118S	10.3	13.0	RWL	8.0	272	804	550/80	✓
	LT285/70R17 E 121/118R	10.8	13.6	RWL	8.5	284	831	550/80	✓
	33X12.50R17LT D 120R	11.8	14.9	RWL	10.0	320	838	450/65	✓
	35X12.50R17LT D 121R	11.8	14.9	RWL	10.0	326	890	450/65	✓
18	LT265/60R18 E 119/116S	10.3	13.0	RWL	8.0	272	775	550/80	✓
	LT265/65R18 E 122/119R	11.3	14.2	RWL	8.0	272	801	550/80	✓
	LT275/65R18 E 123/120R	10.8	13.6	RWL	8.0	279	813	550/80	✓
	LT275/70R18 E 125/122R	10.8	13.6	RWL	8.0	279	843	550/80	✓
	33X12.50R18LT E 118R	11.8	14.9	RWL	10.0	320	838	550/80	✓
	35X12.50R18LT E 123R	11.8	14.9	RWL	10.0	320	890	550/80	✓
20	LT265/60R20 E 121/118S	10.3	13.0	RWL	8.0	272	826	550/80	✓
	LT275/55R20 E 120/117S	10.3	13.0	RWL	8.5	284	810	550/80	✓
	LT275/60R20 E 123/120S	10.3	13.0	RWL	8.0	279	836	550/80	✓
	LT275/65R20 E 126/123R	10.8	13.6	RWL	8.0	279	866	550/80	✓

CATCHFORS ATII

Wheel Diameter	Size Description	Tread MM	Depth 1/32"	Sidewall	Standard Rim	Section Width (mm)	OA. Diameter (mm)	Max. Pressure (kpa/psi)	M+S
16	P265/70R16 112T	10.3	13.0	RWL	8.0	272	778	300/44	✓
	P265/75R16 116T	10.3	13.0	RWL	7.5	267	804	300/44	✓
17	P265/65R17 112T	10.3	13.0	RWL	7.0	272	776	300/44	✓
	P265/70R17 115T	10.3	13.0	RWL	8.0	272	804	300/44	✓
18	P265/60R18 114TXL	10.3	13.0	RWL	8.0	272	775	340/50	✓
	P265/65R18 116TXL	11.3	14.2	RWL	8.0	272	801	340/50	✓
20	P265/50R20 111HXL	8.8	11.1	RWL	9.0	277	774	340/50	✓
	P265/55R20 115HXL	8.8	11.1	RWL	8.5	274	800	340/50	✓
	P275/55R20 117TXL	10.3	13.0	RWL	8.5	284	810	340/50	✓
	P275/60R20 119TXL	10.3	13.0	RWL	8.0	279	836	340/50	✓



EAGLEFORS ATX

ALL TERRAIN

The popular EAGLEFORS ATX combines versatility and distinctive design into on and off road traction, ride comfort and reliability, more struggling than normal AT tire in various road conditions.

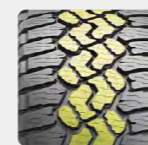
UTQG: 600 A A M+S

Only for P series

RANGE:	17-24
SPEED RATE:	T/H/S/R
ASPECT RATIO:	45-75
SECTION WIDTH:	225-325

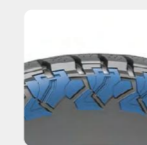


EAGLEFORS ATX



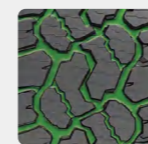
TECHNICAL FEATURE A

Strength engineering and central large blocks deliver off-road traction + on-road stability.



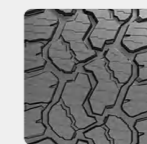
TECHNICAL FEATURE B

Rugged and extended over-the-shoulder tread for enough gripping and cuts prevented in harsh off-roading.



TECHNICAL FEATURE C

Wide-narrow groove arrangement reduces road noise and improves traction.

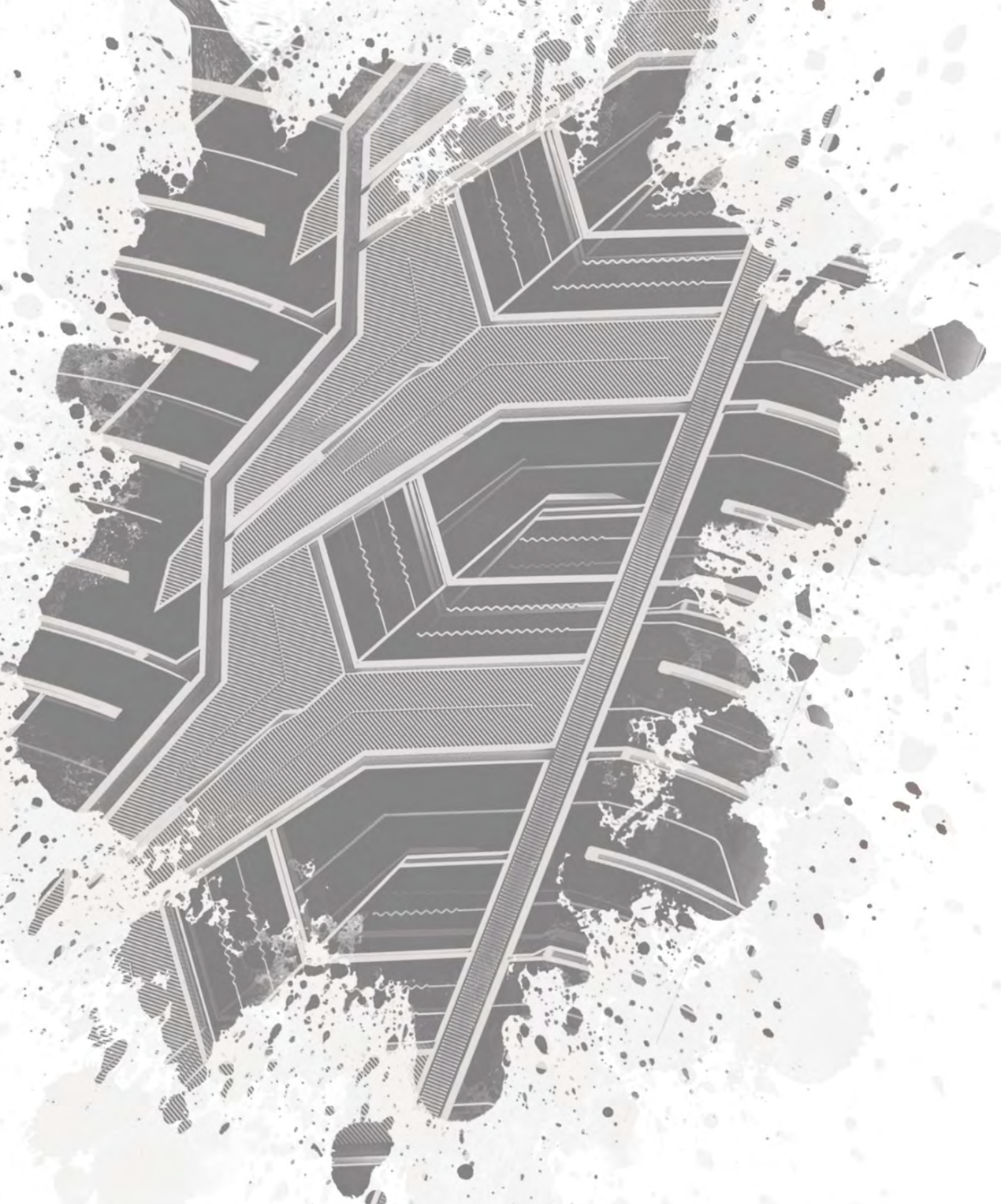


TECHNICAL FEATURE D

Strong inner structure+optimally biting edges: better handling, stable dirt/mud/snow performance, quiet rides.

Wheel Diameter	Size Description	Tread Depth MM	1/32"	Sidewall	Standard Rim	Section Width (mm)	OA. Diameter (mm)	Max. Pressure (kpa/psi)	M+S
17	P225/65R17 102T	9.0	11.3	RWL	6.5	228	724	300/44	✓
	P235/65R17 104T	9.0	11.3	RWL	7.0	240	738	300/44	✓
	P245/65R17 111TXL	9.0	11.3	RWL	7.0	248	750	340/50	✓
	P245/70R17 110T	9.0	11.3	RWL	7.0	248	776	300/44	✓
18	P235/60R18 107TXL	9.0	11.3	RWL	7.0	240	739	340/50	✓
	P245/60R18 105T	9.0	11.3	RWL	7.0	248	751	300/44	✓
19	P235/55R19 105TXL	9.0	11.3	RWL	7.5	245	741	340/50	✓
	P245/55R19 103T	9.0	11.3	RWL	7.5	253	753	300/44	✓
20	P245/50R20 102T	9.0	11.3	RWL	7.5	253	754	300/44	✓
	P255/50R20 109TXL	9.0	11.3	RWL	8.0	265	764	340/50	✓
22	P275/50R22 115HXL	9.0	11.3	RWL	8.5	284	835	340/50	✓
	P285/45R22 114HXL	9.0	11.3	RWL	9.5	285	815	340/50	✓

Wheel Diameter	Size Description	Tread Depth MM	1/32"	Sidewall	Standard Rim	Section Width (mm)	OA. Diameter (mm)	Max. Pressure (kpa/psi)	M+S
17	LT305/65R17 121/118S	11.3	14.2	RWL	9.0	311	828	450/65	✓
	LT315/70R17 121/118S	11.3	14.2	RWL	9.5	323	874	450/65	✓
18	LT285/65R18 125/122S	11.3	14.2	RWL	8.5	292	827	550/80	✓
	LT285/75R18 129/126R	11.3	14.2	RWL	8.0	286	885	550/80	✓
	LT305/70R18 126/123R	11.3	14.2	RWL	9.0	311	885	450/65	✓
	LT325/65R18 127/124S	11.3	14.2	RWL	9.5	331	879	450/65	✓
20	LT285/55R20 122/119S	11.3	14.2	RWL	9.0	297	822	550/80	✓
	LT285/60R20 125/122S	11.3	14.2	RWL	8.5	292	850	550/80	✓
	LT295/60R20 126/123R	11.3	14.2	RWL	8.5	299	862	550/80	✓
	LT305/55R20 121/118S	11.3	14.2	RWL	9.5	316	844	450/65	✓
	33X12.50R20LT 114R	11.3	14.2	RWL	10.0	318	826	450/65	✓
	35X12.50R20LT 125R	11.3	14.2	RWL	10.0	318	877	550/80	✓
22	33X12.50R22LT 109S	11.3	14.2	RWL	10.5	316	826	450/65	✓
	35X12.50R22LT 121R	11.3	14.2	RWL	10.0	318	877	450/65	✓
24	35X12.50R24LT 116R	11.3	14.2	RWL	10.5	316	877	550/80	✓
	37X13.50R24LT 124R	11.3	14.2	RWL	11.0	345	928	550/80	✓



 **AUTOCRUZE**

WWW.LANDSPIDERTIREUSA.COM | LANDSPIDER TIRE INC.